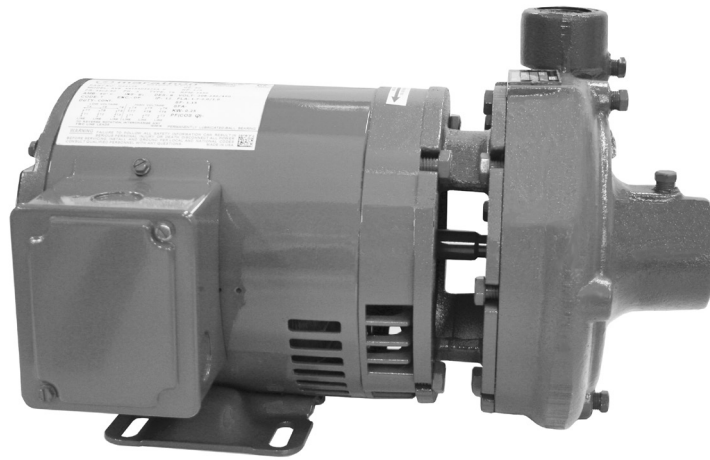


**PARTS LIST**

CP-210A-PL

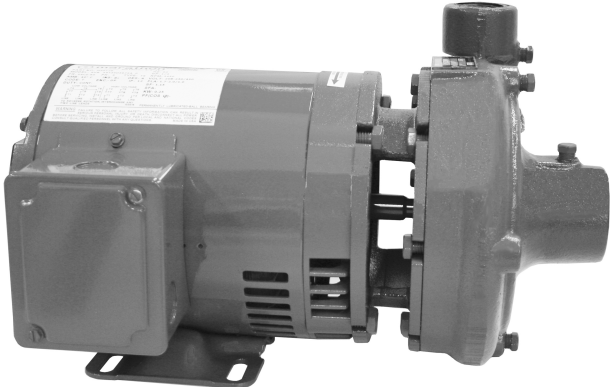


# Series e-1535

## Close Coupled Centrifugal Pumps

### Replacement Parts





# Index

How to use this Parts List..... Page 3

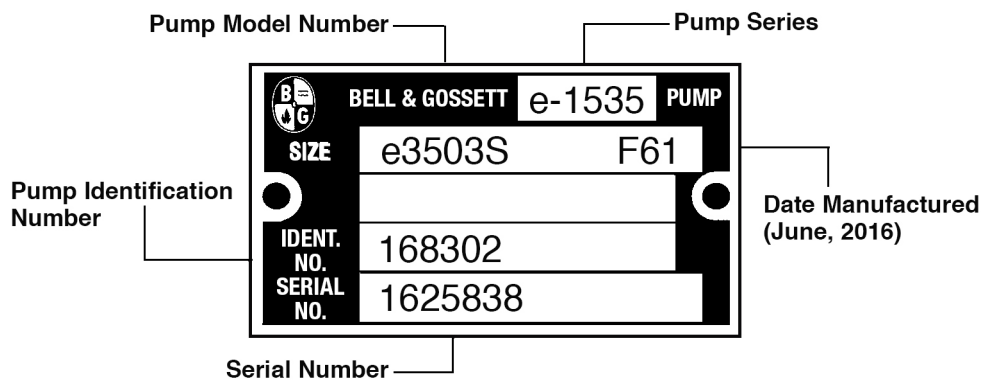
e-1535 Pump Exploded View..... Page 4

Replacement Parts for Stock Pumps..... Page 5-6

Replacement Parts for BTO Pumps..... Page 7

# How to use this PARTS LIST

The pump nameplate identifies the pump series, pump model number and identification number as shown below.

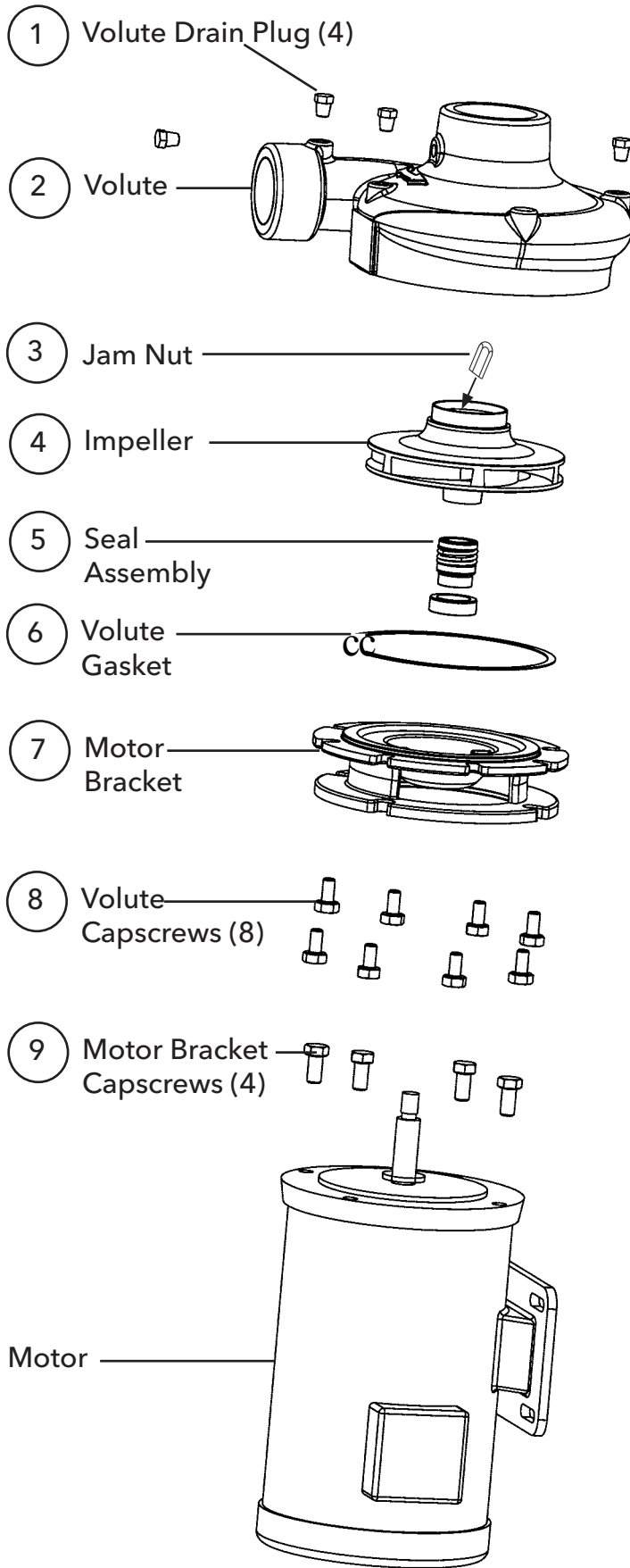


The nameplate above identifies the pump as a e-1535, model number e3503s, with an identification number of 168023. The serial number specifically identifies the unit for future reference. **DO NOT REMOVE THE NAMEPLATE.** It is important when ordering replacement parts to furnish complete nameplate data.

To ensure the correct parts will be selected, follow the procedure below:

1. Determine from the nameplate the pump series and the pump model number.
2. Refer to the index for the page number of the parts breakdown for the specific model pump.
3. Find the proper column in the parts breakdown for the model number involved.
4. Select parts numbers using the drawing on page 4 for parts identification.
5. When replacing the motor, secure all information from the motor nameplate and use to select the proper motor. Always supply complete motor nameplate data when ordering replacement motors.

### Series e-1535 Pump Exploded View



**e-1535 STOCK PUMPS****.75AAC STOCK PUMPS**

| ITEM NO. | DESCRIPTION                | e3501    | e3502    | e3503    | e3517    | e3504    |
|----------|----------------------------|----------|----------|----------|----------|----------|
| 2        | Volute                     | P41110   | P41110   | P41110   | P41110   | P41110   |
| 1        | Volute Drain Plug (4)      | P39020   | P39020   | P39020   | P39020   | P39020   |
| 6        | Volute Gasket              | P57410   | P57410   | P57410   | P57410   | P57410   |
| 8        | Volute Capscrew (8)        | P10359   | P10359   | P10359   | P10359   | P10359   |
| 4        | Impeller*                  | P2004344 | P2003625 | P2004347 | P2004345 | P2003625 |
| 3        | Jam Nut Kit                | P2004389 | P2004389 | P2004389 | P2004389 | P2004389 |
| 5        | Seal Assembly              | P2000805 | P2000805 | P2000805 | P2000805 | P2000805 |
| 7        | Motor Bracket              | P2001335 | P2001335 | P2001335 | P2001335 | P2001335 |
| 9        | Motor Bracket Capscrew (4) | DJ0063   | DJ0063   | DJ0063   | DJ0063   | DJ0063   |

**1AAC STOCK PUMPS**

| ITEM NO. | DESCRIPTION                | e3505    | e3506    | e3507    | e3508    |
|----------|----------------------------|----------|----------|----------|----------|
| 2        | Volute                     | P41140   | P41140   | P41140   | P41140   |
| 1        | Volute Drain Plug (4)      | P39020   | P39020   | P39020   | P39020   |
| 6        | Volute Gasket              | P57410   | P57410   | P57410   | P57410   |
| 8        | Volute Capscrew (8)        | P10359   | P10359   | P10359   | P10359   |
| 4        | Impeller*                  | P2004344 | P2003625 | P2004347 | P2003625 |
| 3        | Jam Nut Kit                | P2004389 | P2004389 | P2004389 | P2004389 |
| 5        | Seal Assembly              | P2000805 | P2000805 | P2000805 | P2000805 |
| 7        | Motor Bracket              | P2001335 | P2001335 | P2001335 | P2001335 |
| 9        | Motor Bracket Capscrew (4) | DJ0063   | DJ0063   | DJ0063   | DJ0063   |

**1.25AAC STOCK PUMPS**

| ITEM NO. | DESCRIPTION                | e3509    | e3510    | e3511    | e3512    |
|----------|----------------------------|----------|----------|----------|----------|
| 2        | Volute                     | P41280   | P41280   | P41280   | P41280   |
| 1        | Volute Drain Plug (4)      | P39020   | P39020   | P39020   | P39020   |
| 6        | Volute Gasket              | P57410   | P57410   | P57410   | P57410   |
| 8        | Volute Capscrew (8)        | P10359   | P10359   | P10359   | P10359   |
| 4        | Impeller*                  | P2004352 | P2004389 | P2004353 | P2004389 |
| 3        | Jam Nut Kit                | P2004389 | P2004389 | P2004389 | P2004389 |
| 5        | Seal Assembly              | P2000805 | P2000805 | P2000805 | P2000805 |
| 7        | Motor Bracket              | P2001335 | P2001335 | P2001335 | P2001335 |
| 9        | Motor Bracket Capscrew (4) | DJ0063   | DJ0063   | DJ0063   | DJ0063   |

\*All replacement impellers purchased will also need a Jam Nut Kit

Factory Recommended Spare Parts

**1.5AAC STOCK PUMPS**

| ITEM NO. | DESCRIPTION                | e3513    | e3514    | e3515    | e3516    |
|----------|----------------------------|----------|----------|----------|----------|
| 2        | Volute                     | P41650   | P41650   | P41650   | P41650   |
| 1        | Volute Drain Plug (4)      | P39020   | P39020   | P39020   | P39020   |
| 6        | Volute Gasket              | P57410   | P57410   | P57410   | P57410   |
| 8        | Volute Capscrew (8)        | P10359   | P10359   | P10359   | P10359   |
| 4        | Impeller*                  | P2004367 | P2003628 | P2004368 | P2004366 |
| 3        | Jam Nut Kit                | P2004389 | P2004389 | P2004389 | P2004389 |
| 5        | Seal Assembly              | P2000805 | P2000805 | P2000805 | P2000805 |
| 7        | Motor Bracket              | P2001335 | P2001335 | P2001335 | P2001335 |
| 9        | Motor Bracket Capscrew (4) | DJ0063   | DJ0063   | DJ0063   | DJ0063   |

\*All replacement impellers purchased will also need a Jam Nut Kit

**REPLACEMENT MOTORS**

| PUMP MODEL      | PUMP SIZE | IMPELLER DIAMETER | 1 PHASE | 3 PHASE | HP    |
|-----------------|-----------|-------------------|---------|---------|-------|
| e3501S          | .75AAC    | 5"                | SM2093  |         | 1/4   |
| e3502S          | .75AAC    | 5.25"             | SM2094  |         | 1/3   |
| e3503S & e3503T | .75AAC    | 4.5"              | SM2087  | SM2104  | 1 1/2 |
| e3517S & e3517T | .75AAC    | 4.8"              | SM2088  | SM2105  | 2     |
| e3504S & e3504T | .75AAC    | 5.25"             | SM2089  | SM2106  | 3     |
| e3505S          | 1AAC      | 5"                | SM2094  |         | 1/3   |
| e3506S & e3506T | 1AAC      | 5.25"             | SM2081  | SM2108  | 1/2   |
| e3507S & e3507T | 1AAC      | 4.5"              | SM2088  | SM2105  | 2     |
| e3508S & e3508T | 1AAC      | 5.25"             | SM2089  | SM2106  | 3     |
| e3509S & e3509T | 1.25AAC   | 5"                | SM2081  | SM2108  | 1/2   |
| e3510S & e3510T | 1.25AAC   | 5.25"             | SM2083  | SM2109  | 3/4   |
| e3511S & e3511T | 1.25AAC   | 4.5"              | SM2089  | SM2106  | 3     |
| e3512T          | 1.25AAC   | 5.25"             |         | SM2107  | 5     |
| e3513S & e3513T | 1.5AAC    | 4.75"             | SM2081  | SM2108  | 1/2   |
| e3514S & e3514T | 1.5AAC    | 5.25"             | SM2083  | SM2109  | 3/4   |
| e3515S & e3515T | 1.5AAC    | 4.38"             | SM2089  | SM2106  | 3     |
| e3516T          | 1.5AAC    | 5.12"             |         | SM2107  | 5     |

Factory Recommended Spare Parts

## e-1535 BTO Pumps

| ITEM NO. | DESCRIPTION                | .75 AAC       |            | 1AAC          |            |
|----------|----------------------------|---------------|------------|---------------|------------|
|          |                            | BRONZE FITTED | ALL BRONZE | BRONZE FITTED | ALL BRONZE |
| 2        | Volute                     | P41110        | P2000026   | P41140        | P2000016   |
| 1        | Volute Drain Plug          | P39020        | P39470     | P39020        | P39470     |
| 8        | Volute Capscrew (8)        | P10359        | P10359     | P10359        | P10359     |
| 6        | Volute Gasket              | P57410        | P57410     | P57410        | P57410     |
| 4        | Impeller*                  | P2003625      | P2003625   | P2003625      | P2003625   |
| 3        | Jam Nut Kit                | P2004389      | P2004389   | P2004389      | P2004389   |
| 5        | Seal (EPR/C/SiC)           | P2000805      | P2000805   | P2000805      | P2000805   |
| 5        | Seal (FKM/C/SiC)           | P2000806      | P2000806   | P2000806      | P2000806   |
| 5        | Seal (E/GSiC/GSiC)         | P2000807      | P2000807   | P2000807      | P2000807   |
| 7        | Motor Brkt/Coverplate      | P2001335      | P2001318   | P2001335      | P2001318   |
| 7        | Motor Brkt/Coverplate -F   | P2001360      | P2001359   | P2001360      | P2001359   |
| 9        | Motor Bracket Capscrew (4) | DJ0063        | DJ0063     | DJ0063        | DJ0063     |

| ITEM NO. | DESCRIPTION                | 1.25AAC       |            | 1.5AAC        |            |
|----------|----------------------------|---------------|------------|---------------|------------|
|          |                            | BRONZE FITTED | ALL BRONZE | BRONZE FITTED | ALL BRONZE |
| 2        | Volute                     | P41280        | P2000018   | P41650        | P2000028   |
| 1        | Volute Drain Plug          | P39020        | P39470     | P39020        | P39470     |
| 8        | Volute Capscrew (8)        | P10359        | P10359     | P10359        | P10359     |
| 6        | Volute Gasket              | P57410        | P57410     | P57410        | P57410     |
| 4        | Impeller*                  | P2003626      | P2003626   | P2003628      | P2003628   |
| 3        | Jam Nut Kit                | P2004389      | P2004389   | P2004389      | P2004389   |
| 5        | Seal (EPR/C/SiC)           | P2000805      | P2000805   | P2000805      | P2000805   |
| 5        | Seal (FKM/C/SiC)           | P2000806      | P2000806   | P2000806      | P2000806   |
| 5        | Seal (E/GSiC/GSiC)         | P2000807      | P2000807   | P2000807      | P2000807   |
| 7        | Motor Brkt/Coverplate      | P2001335      | P2001318   | P2001335      | P2001318   |
| 7        | Motor Brkt/Coverplate -F   | P2001360      | P2001359   | P2001360      | P2001359   |
| 9        | Motor Bracket Capscrew (4) | DJ0063        | DJ0063     | DJ0063        | DJ0063     |

\*All replacement impellers purchased will also need a Jam Nut Kit

 Factory Recommended Spare Parts

# Xylem |'zīləm|

- 1) The tissue in plants that brings water upward from the roots;
- 2) a leading global water technology company.

We're a global team unified in a common purpose: creating advanced technology solutions to the world's water challenges. Developing new technologies that will improve the way water is used, conserved, and re-used in the future is central to our work. Our products and services move, treat, analyze, monitor and return water to the environment, in public utility, industrial, residential and commercial building services settings. Xylem also provides a leading portfolio of smart metering, network technologies and advanced analytics solutions for water, electric and gas utilities. In more than 150 countries, we have strong, long-standing relationships with customers who know us for our powerful combination of leading product brands and applications expertise with a strong focus on developing comprehensive, sustainable solutions.

**For more information on how Xylem can help you, go to [www.xylem.com](http://www.xylem.com)**

We value your feedback. Please take our 3 question survey at **[bellgossett.com/survey](http://bellgossett.com/survey)** to let us know how we are doing.



Xylem Inc.  
8200 N. Austin Avenue  
Morton Grove, Illinois 60053  
Phone: (847) 966-3700  
Fax: (847) 965-8379  
[www.bellgossett.com](http://www.bellgossett.com)

Bell & Gossett is a trademark of Xylem Inc. or one of its subsidiaries.  
© 2018 Xylem Inc. CP-210A-PL April 2018