

# Series e-82SC

## Replacement Parts





## Index

|  |   |
|--|---|
| Nameplate Data.....                              | 3 |
| Exploded View - Standard Seal Configuration..... | 4 |

### **Standard Configuration (-F)**

|  |    |
|--|----|
| 2.5x7, 3x7, 4x7, 6x7 (Small Bore).....         | 5  |
| 4x7, 6x7 (Large Bore).....                     | 7  |
| 2.5x9.5, 3x9.5, 4x9.5, 6x9.5 (Small Bore)..... | 9  |
| 2.5x9.5, 6x9.5 (Large Bore).....               | 11 |
| 3x11, 4x11 (Small Bore).....                   | 13 |
| 4x11, 6x11 (Large Bore).....                   | 15 |



**DATA SHOWN ABOVE ARE FOR REPRESENTATION ONLY**

The pump nameplate identifies the pump by pipe size, pump construction and impeller diameter as shown above. In this example, the nameplate shows a Series e-82SC, size 3x3x7 in stainless steel fitted (SSF) construction. The impeller diameter is 7" and the motor is 5 HP, 1750 RPM operating speed. The serial number specifically identifies the pump for future reference.

DO NOT REMOVE THE NAMEPLATE. It is important when ordering replacement parts to furnish complete nameplate data.

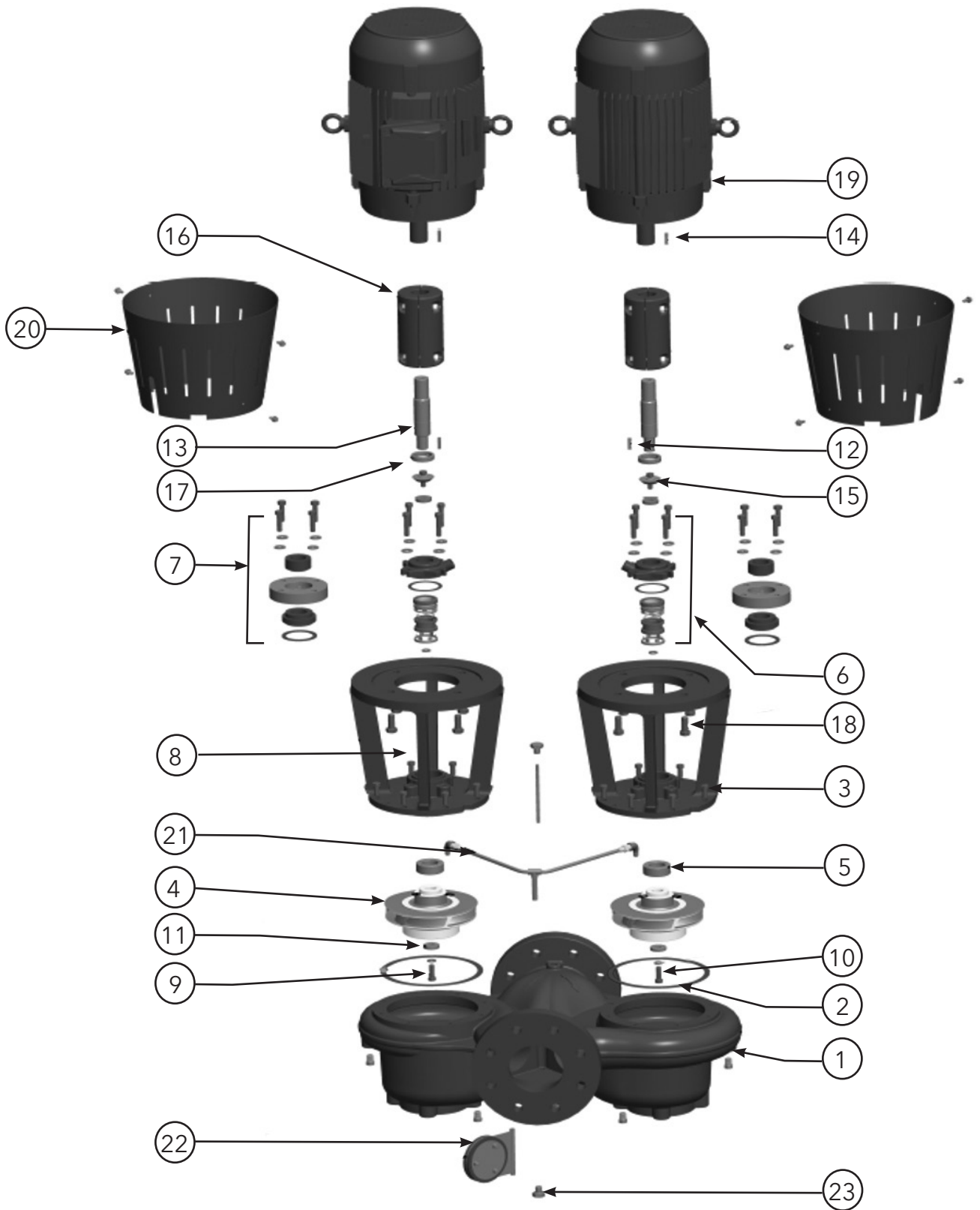
The Series e-82SC pump is furnished in "Stuffing Box" construction. The "Stuffing Box" model has two seal configurations:

- e-82SC with inside seal (standard)**
- e-82SC with outside seal (optional)**

To ensure the correct parts are selected, use the following procedure:

1. Determine from the nameplate the pump size, seal configuration, pump construction and impeller diameter.
2. Measure the shaft diameter.
3. Refer to index for the page number of the parts breakdown for the specific size pump.
4. Find the proper column in the parts breakdown for the pump construction involved.
5. Select part numbers using the exploded view numbered drawing for identification. Where shaft diameter affects parts selection, use the measurement secured in Step 2.
6. Motor brackets vary with motor frame sizes. Use the motor frame number (found on the motor nameplate) to select the proper motor bracket. Supply complete motor nameplate data when ordering replacement motors.

# Standard Seal – Exploded View



| MOTOR FRAMES 143TC THROUGH 256TC |   |     |           |          |          |          |
|----------------------------------|---|-----|-----------|----------|----------|----------|
| ITEM                             | DESCRIPTION   | QTY | 2.5X2.5X7 | 3X3X7    | 4X4X7    | 6X6X7    |
| 1                                | Volute  | 1   | P2004898  | P2004866 | P2004874 | P2004921 |
|                                  | Pipe Plug 1/4   | 6   | P39040    | P39040   | P39040   | P39040   |
| 2                                | Volute Gasket   | 2   | P57700    | P57700   | P57700   | P57700   |
| 3                                | Volute Capscrew   | 16  | P40020    | P40020   | P40020   | P40020   |
| 4                                | Impeller (State Diameter) 7" Full Diameter                | 2   | P2000854  | P2000850 | P2000858 | P2001003 |
| 5                                | Throttle Bushing (Bearing)                                | 2   | P71378    | P71378   | P71378   | P71378   |
| 9                                | Impeller Bolt   | 2   | P52350    | P52350   | P52350   | P52350   |
| 10                               | Impeller Lockwasher                                       | 2   | J23874    | J23874   | J23874   | J23874   |
| 11                               | Impeller Washer   | 2   | P46380    | P46380   | P46380   | P46380   |
| 12                               | Impeller Key  | 2   | P49369    | P49369   | P49369   | P49369   |
| 13                               | Shaft   | 2   | P2002870  | P2002870 | P2002870 | P2002870 |
| 14                               | Coupler Key   | 2   | P75182    | P75182   | P75182   | P75182   |
| 15                               | Tapered Washer  | 2   | P2002874  | P2002874 | P2002874 | P2002874 |
| 15                               | Tapered Washer Capscrew                                   | 2   | 510830    | 510830   | 510830   | 510830   |
| 15                               | Tapered Washer Lockwasher                                 | 2   | P16690    | P16690   | P16690   | P16690   |
| 20                               | Guard   | 2   | P71385    | P71385   | P71385   | P71385   |
| 20                               | Guard Screw   | 8   | P86085    | P86085   | P86085   | P86085   |
| 22                               | Flapper assembly  | 1   | P2005003  | P2005004 | P2005008 | P2005006 |
| 23                               | Self sealing screw  | 2   | P2004967  | P2004967 | P2004967 | P2004967 |
| INSIDE SEAL MECHANICAL SEAL      |   |     |           |          |          |          |
| 6                                | Mechanical Seal Standard - EPR/Carbon/Ceramic/SS          | 2   | P75221    | P75221   | P75221   | P75221   |
| 6                                | Mechanical Seal Optional - EPR/SilCar/SilCar/SS           | 2   | P2001703  | P2001703 | P2001703 | P2001703 |
| 6                                | Mechanical Seal Optional - FMK (Viton®)/Carbon/Ceramic/SS | 2   | P75225    | P75225   | P75225   | P75225   |
| 6                                | Mechanical Seal Optional - EPR/Carbon/TungCar/SS          | 2   | P75223    | P75223   | P75223   | P75223   |
| 6                                | Cap   | 2   | P75214    | P75214   | P75214   | P75214   |
| 6                                | Capscrew  | 8   | H28100    | H28100   | H28100   | H28100   |
| 6                                | Gasket  | 2   | P85077    | P85077   | P85077   | P85077   |
| 6                                | Snap Ring   | 2   | P75218    | P75218   | P75218   | P75218   |
| 6                                | Washer  | 8   | P44580    | P44580   | P44580   | P44580   |
| OUTSIDE SEAL MECHANICAL SEAL     |   |     |           |          |          |          |
| 7                                | Mechanical Seal Standard - EPR/Carbon/Ceramic/SS          | 2   | P75202    | P75202   | P75202   | P75202   |
| 7                                | Mechanical Seal Option - FMK (Viton®)/Carbon/Ceramic/SS   | 2   | P2001063  | P2001063 | P2001063 | P2001063 |
| 7                                | Capscrew  | 8   | H52100    | H52100   | H52100   | H52100   |
| 7                                | Gland   | 2   | P75204    | P75204   | P75204   | P75204   |
| 7                                | Washer  | 8   | P44580    | P44580   | P44580   | P44580   |
| MOTOR FRAMES 143TC-145TC         |   |     |           |          |          |          |
| 8                                | Motor Bracket (Inside Seal)                               | 2   | P2002485  | P2002485 | P2002485 | P2002485 |
| 8                                | Motor Bracket (Outside Seal)                              | 2   | P2002486  | P2002486 | P2002486 | P2002486 |
| 17                               | Setscrew Collar   | 2   | P2002492  | P2002492 | P2002492 | P2002492 |
| 17                               | Set Screw   | 6   | P71386    | P71386   | P71386   | P71386   |
| 18                               | Motor Bracket Capscrew                                    | 8   | DJ0071    | DJ0071   | DJ0071   | DJ0071   |
| 19                               | Motor Key   | 2   | AC1642    | AC1642   | AC1642   | AC1642   |
| 16                               | Coupler, Split  | 2   | P2002487  | P2002487 | P2002487 | P2002487 |
| 16                               | Capscrew  | 8   | DJ0042    | DJ0042   | DJ0042   | DJ0042   |
| 16                               | Hex Nut   | 8   | P44190    | P44190   | P44190   | P44190   |
| 16                               | Lockwasher  | 8   | P44620    | P44620   | P44620   | P44620   |
| MOTOR FRAMES 182TC-184TC         |   |     |           |          |          |          |
| 8                                | Motor Bracket (Inside Seal)                               | 2   | P70928    | P70928   | P70928   | P70928   |
| 8                                | Motor Bracket (Outside Seal)                              | 2   | P70929    | P70929   | P70929   | P70929   |
| 17                               | Setscrew Collar   | 2   | P70995    | P70995   | P70995   | P70995   |
| 17                               | Set Screw   | 6   | P71386    | P71386   | P71386   | P71386   |
| 18                               | Motor Bracket Capscrew                                    | 8   | P13780    | P13780   | P13780   | P13780   |
| 19                               | Motor Key   | 2   | P75189    | P75189   | P75189   | P75189   |
| 16                               | Coupler, Split  | 2   | P2002864  | P2002864 | P2002864 | P2002864 |
| 16                               | Capscrew  | 8   | DJ0042    | DJ0042   | DJ0042   | DJ0042   |
| 16                               | Hex Nut   | 8   | P44190    | P44190   | P44190   | P44190   |
| 16                               | Lockwasher  | 8   | P44620    | P44620   | P44620   | P44620   |

| ITEM                            | DESCRIPTION                            | QTY | 2.5X2.5X7 | 3X3X7    | 4X4X7    | 6X6X7    |
|---------------------------------|--|-----|-----------|----------|----------|----------|
| <b>MOTOR FRAMES 213TC-215TC</b> |  |     |           |          |          |          |
| 8                               | Motor Bracket (Inside Seal)            | 2   | P70928    | P70928   | P70928   | P70928   |
| 8                               | Motor Bracket (Outside Seal)           | 2   | P70929    | P70929   | P70929   | P70929   |
| 17                              | Setscrew Collar                        | 2   | P70996    | P70996   | P70996   | P70996   |
| 17                              | Set Screw                              | 6   | P71387    | P71387   | P71387   | P71387   |
| 18                              | Motor Bracket Capscrew                 | 8   | P13780    | P13780   | P13780   | P13780   |
| 19                              | Motor Key                              | 2   | AC0523    | AC0523   | AC0523   | AC0523   |
| 16                              | Coupler, Split                         | 2   | P2002865  | P2002865 | P2002865 | P2002865 |
| 16                              | Capscrew                               | 8   | P75206    | P75206   | P75206   | P75206   |
| 16                              | Hex Nut                                | 8   | P44190    | P44190   | P44190   | P44190   |
| 16                              | Lockwasher                             | 8   | P44620    | P44620   | P44620   | P44620   |
| <b>MOTOR FRAMES 254TC-256TC</b> |  |     |           |          |          |          |
| 8                               | Motor Bracket (Inside Seal)            | 2   | P70928    | P70928   | P70928   | P70928   |
| 8                               | Motor Bracket (Outside Seal)           | 2   | P70929    | P70929   | P70929   | P70929   |
| 17                              | Setscrew Collar                        | 2   | P70997    | P70997   | P70997   | P70997   |
| 17                              | Set Screw                              | 6   | P71387    | P71387   | P71387   | P71387   |
| 18                              | Motor Bracket Capscrew                 | 8   | P13780    | P13780   | P13780   | P13780   |
| 19                              | Motor Key                              | 2   | P75190    | P75190   | P75190   | P75190   |
| 16                              | Coupler, Split                         | 2   | P2002866  | P2002866 | P2002866 | P2002866 |
| 16                              | Capscrew                               | 8   | P75207    | P75207   | P75207   | P75207   |
| 16                              | Hex Nut                                | 8   | P44190    | P44190   | P44190   | P44190   |
| 16                              | Lockwasher                             | 8   | P44620    | P44620   | P44620   | P44620   |
| <b>FLUSH PIPE ASSEMBLY</b>      |  |     |           |          |          |          |
| 21                              | Nipple                                 | 2   | DL0025    | DL0025   | DL0025   | DL0025   |
| 21                              | Straight Tee                           | 2   | P75181    | P75181   | P75181   | P75181   |
| 21                              | Bushing, Hex 0.25MNPTx0.12FNPT - Steel | 2   | 511849    | 511849   | 511849   | 511849   |
| 21                              | Hose                                   | 2   | P2002542  | P2002542 | P2002542 | P2002543 |
| 21                              | Valve, vent                            | 2   | P75255    | P75255   | P75255   | P75255   |
| 21                              | Elbow, Street 0.25                     | 2   | AC0530    | AC0530   | AC0530   | AC0530   |
| 21                              | Bushing, Hex 0.25MNPTx0.12FNPT         | 2   | DF0003    | DF0003   | DF0003   | DF0003   |

| <b>MOTOR FRAMES 284TC THROUGH 365TC</b> |   |     |          |          |
|---|---|-----|----------|----------|
| ITEM                                    | DESCRIPTION   | QTY | 4X4X7    | 6X6X7    |
| 1                                       | Volute  | 1   | P2004874 | P2004921 |
|   | Pipe Plug 1/4   | 6   | P39040   | P39040   |
| 2                                       | Volute Gasket   | 2   | P57700   | P57700   |
| 3                                       | Volute Capscrew   | 16  | P40020   | P40020   |
| 4                                       | Impeller (State Diameter) 7" Full Diameter                | 2   | P2000860 | P2001005 |
| 5                                       | Throttle Bushing (Bearing)                                | 2   | P71379   | P71379   |
| 9                                       | Impeller Bolt   | 2   | P13800   | P13800   |
| 10                                      | Impeller Lockwasher                                       | 2   | J23875   | J23875   |
| 11                                      | Impeller Washer   | 2   | P51230   | P51230   |
| 12                                      | Impeller Key  | 2   | P49372   | P49372   |
| 13                                      | Shaft   | 2   | P2002872 | P2002872 |
| 14                                      | Coupler Key   | 2   | P75183   | P75183   |
| 15                                      | Tapered Washer  | 2   | P2002875 | P2002875 |
| 15                                      | Tapered Washer Capscrew                                   | 2   | 510830   | 510830   |
| 15                                      | Tapered Washer Lockwasher                                 | 2   | P16690   | P16690   |
| 20                                      | Guard   | 2   | P2004734 | P2004734 |
| 20                                      | Guard Screw   | 8   | P86085   | P86085   |
| 22                                      | Flapper assembly  | 1   | P2005008 | P2005006 |
| 23                                      | Self sealing screw  | 2   | P2004967 | P2004967 |
| <b>INSIDE SEAL MECHANICAL SEAL</b>      |   |     |          |          |
| 6                                       | Mechanical Seal Standard - EPR/Carbon/Ceramic/SS          | 2   | P75222   | P75222   |
| 6                                       | Mechanical Seal Optional - EPR/SilCar/SilCar/SS           | 2   | P2001704 | P2001704 |
| 6                                       | Mechanical Seal Optional - FMK (Viton®)/Carbon/Ceramic/SS | 2   | P75226   | P75226   |
| 6                                       | Mechanical Seal Optional - EPR/Carbon/TungCar/SS          | 2   | P75224   | P75224   |
| 6                                       | Cap   | 2   | P75216   | P75216   |
| 6                                       | Capscrew  | 8   | H28100   | H28100   |
| 6                                       | Gasket  | 2   | P75201   | P75201   |
| 6                                       | Snap Ring   | 2   | P75219   | P75219   |
| 6                                       | Washer  | 8   | P44580   | P44580   |
| <b>OUTSIDE SEAL MECHANICAL SEAL</b>     |   |     |          |          |
| 7                                       | Mechanical Seal Standard - EPR/Carbon/Ceramic/SS          | 2   | P75203   | P75203   |
| 7                                       | Mechanical Seal Optional - FMK (Viton®)/Carbon/Ceramic/SS | 2   | P2001064 | P2001064 |
| 7                                       | Capscrew  | 8   | H52100   | H52100   |
| 7                                       | Gland   | 2   | P75205   | P75205   |
| 7                                       | Washer  | 8   | P44580   | P44580   |
| <b>MOTOR FRAMES 284TC-286TC</b>         |   |     |          |          |
| 8                                       | Motor Bracket (Inside Seal)                               | 2   | P2004696 | P2004696 |
| 8                                       | Motor Bracket (Outside Seal)                              | 2   | P2004702 | P2004702 |
| 17                                      | Setscrew Collar   | 2   | P71373   | P71373   |
| 17                                      | Set Screw   | 6   | P71388   | P71388   |
| 18                                      | Motor Bracket Capscrew                                    | 8   | P13780   | P13780   |
| 19                                      | Motor Key   | 2   | P75191   | P75191   |
| 16                                      | Coupler, Split  | 2   | P2002868 | P2002868 |
| 16                                      | Capscrew  | 8   | P44250   | P44250   |
| 16                                      | Hex Nut   | 8   | P52380   | P52380   |
| 16                                      | Lockwasher  | 8   | P16690   | P16690   |
| <b>MOTOR FRAMES 284TSCTC-286TSCTC</b>   |   |     |          |          |
| 8                                       | Motor Bracket (Inside Seal)                               | 2   | P2004696 | P2004696 |
| 8                                       | Motor Bracket (Outside Seal)                              | 2   | P2004702 | P2004702 |
| 17                                      | Setscrew Collar   | 2   | P70997   | P70997   |
| 17                                      | Set Screw   | 6   | P71387   | P71387   |
| 18                                      | Motor Bracket Capscrew                                    | 8   | P13780   | P13780   |
| 19                                      | Motor Key   | 2   | P75191   | P75191   |
| 16                                      | Coupler, Split  | 2   | P2004697 | P2004697 |
| 16                                      | Capscrew  | 8   | P44250   | P44250   |
| 16                                      | Hex Nut   | 8   | P52380   | P52380   |
| 16                                      | Lockwasher  | 8   | P16690   | P16690   |

| ITEM                                | DESCRIPTION                            | QTY | 4X4X7    | 6X6X7    |
|-------------------------------------|--|-----|----------|----------|
| <b>MOTOR FRAMES 324TSC-326TSC</b>   |  |     |          |          |
| 8                                   | Motor Bracket (Inside Seal)            | 2   | P2004695 | P2004695 |
| 8                                   | Motor Bracket (Outside Seal)           | 2   | P2004701 | P2004701 |
| 17                                  | Setscrew Collar                        | 2   | P71373   | P71373   |
| 17                                  | Set Screw                              | 6   | P71388   | P71388   |
| 18                                  | Motor Bracket Capscrew                 | 8   | DJ0132   | DJ0132   |
| 19                                  | Motor Key                              | 2   | P75192   | P75192   |
| 16                                  | Coupler, Split                         | 2   | P2002869 | P2002869 |
| 16                                  | Capscrew                               | 8   | P44250   | P44250   |
| 16                                  | Hex Nut                                | 8   | P52380   | P52380   |
| 16                                  | Lockwasher                             | 8   | P16690   | P16690   |
| <b>MOTOR FRAMES 364TSCTC-365TSC</b> |  |     |          |          |
| 8                                   | Motor Bracket (Inside Seal)            | 2   | N/A      | P2004695 |
| 8                                   | Motor Bracket (Outside Seal)           | 2   |          | P2004701 |
| 17                                  | Setscrew Collar                        | 2   |          | P71373   |
| 17                                  | Set Screw                              | 6   |          | P71388   |
| 18                                  | Motor Bracket Capscrew                 | 8   |          | DJ0132   |
| 19                                  | Motor Key                              | 2   |          | P75192   |
| 16                                  | Coupler, Split                         | 2   |          | P2002869 |
| 16                                  | Capscrew                               | 8   |          | P44250   |
| 16                                  | Hex Nut                                | 8   |          | P52380   |
| 16                                  | Lockwasher                             | 8   |          | P16690   |
| <b>FLUSH PIPE ASSEMBLY</b>          |  |     |          |          |
| 21                                  | Nipple                                 | 2   | DL0025   | DL0025   |
| 21                                  | Straight Tee                           | 2   | P75181   | P75181   |
| 21                                  | Bushing, Hex 0.25MNPTx0.12FNPT - Steel | 2   | 511849   | 511849   |
| 21                                  | Hose                                   | 2   | P2002543 | P2002543 |
| 21                                  | Valve, vent                            | 2   | P75255   | P75255   |
| 21                                  | Elbow, Street 0.25                     | 2   | AC0530   | AC0530   |
| 21                                  | Bushing, Hex 0.25MNPTx0.12FNPT         | 2   | DF0003   | DF0003   |



| MOTOR FRAMES 143TC THROUGH 256TC |   |     |             |          |          |          |
|----------------------------------|---|-----|-------------|----------|----------|----------|
| ITEM                             | DESCRIPTION   | QTY | 2.5X2.5X9.5 | 3X3X9.5  | 4X4X9.5  | 6X6X9.5  |
| 1                                | Volute  | 1   | P2004945    | P2004738 | P2004882 | P2004929 |
|                                  | Pipe Plug 1/4   | 6   | P39040      | P39040   | P39040   | P39040   |
| 2                                | Volute Gasket   | 2   | P48690      | P48690   | P48690   | P48690   |
| 3                                | Volute Capscrew   | 24  | P03470      | P03470   | P03470   | P03470   |
| 4                                | Impeller (State Diameter) 9.5" Full Diameter              | 2   | P2000844    | P2001745 | P2000828 | P2000915 |
| 5                                | Throttle Bushing (Bearing)                                | 2   | P71378      | P71378   | P71378   | P71378   |
| 9                                | Impeller Bolt   | 2   | P52350      | P52350   | P52350   | P52350   |
| 10                               | Impeller Lockwasher                                       | 2   | J23874      | J23874   | J23874   | J23874   |
| 11                               | Impeller Washer   | 2   | P46380      | P46380   | P46380   | P46380   |
| 12                               | Impeller Key  | 2   | P49369      | P49369   | P49369   | P49369   |
| 13                               | Shaft   | 2   | P2002870    | P2002870 | P2002870 | P2002870 |
| 14                               | Coupler Key   | 2   | P75182      | P75182   | P75182   | P75182   |
| 15                               | Tapered Washer  | 2   | P2002874    | P2002874 | P2002874 | P2002874 |
| 15                               | Tapered Washer Capscrew                                   | 2   | 510830      | 510830   | 510830   | 510830   |
| 15                               | Tapered Washer Lockwasher                                 | 2   | P16690      | P16690   | P16690   | P16690   |
| 20                               | Guard   | 2   | P71382      | P71382   | P71382   | P71382   |
| 20                               | Guard Screw   | 8   | P86085      | P86085   | P86085   | P86085   |
| 22                               | Flapper assembly  | 1   | P2005003    | P2005004 | P2005008 | P2005006 |
| 23                               | Self sealing screw  | 2   | P2004967    | P2004967 | P2004967 | P2004967 |
| INSIDE SEAL MECHANICAL SEAL      |   |     |             |          |          |          |
| 6                                | Mechanical Seal Standard - EPR/Carbon/Ceramic/SS          | 2   | P75221      | P75221   | P75221   | P75221   |
| 6                                | Mechanical Seal Optional - EPR/SilCar/SilCar/SS           | 2   | P2001703    | P2001703 | P2001703 | P2001703 |
| 6                                | Mechanical Seal Optional - FMK (Viton®)/Carbon/Ceramic/SS | 2   | P75225      | P75225   | P75225   | P75225   |
| 6                                | Mechanical Seal Optional - EPR/Carbon/TungCar/SS          | 2   | P75223      | P75223   | P75223   | P75223   |
| 6                                | Cap   | 2   | P75214      | P75214   | P75214   | P75214   |
| 6                                | Capscrew  | 8   | H28100      | H28100   | H28100   | H28100   |
| 6                                | Gasket  | 2   | P85077      | P85077   | P85077   | P85077   |
| 6                                | Snap Ring   | 2   | P75218      | P75218   | P75218   | P75218   |
| 6                                | Washer  | 8   | P44580      | P44580   | P44580   | P44580   |
| OUTSIDE SEAL MECHANICAL SEAL     |   |     |             |          |          |          |
| 7                                | Mechanical Seal Standard - EPR/Carbon/Ceramic/SS          | 2   | P75202      | P75202   | P75202   | P75202   |
| 7                                | Mechanical Seal Option - FMK (Viton®)/Carbon/Ceramic/SS   | 2   | P2001063    | P2001063 | P2001063 | P2001063 |
| 7                                | Capscrew  | 8   | H52100      | H52100   | H52100   | H52100   |
| 7                                | Gland   | 2   | P75204      | P75204   | P75204   | P75204   |
| 7                                | Washer  | 8   | P44580      | P44580   | P44580   | P44580   |
| MOTOR FRAMES 143TC-145TC         |   |     |             |          |          |          |
| 8                                | Motor Bracket (Inside Seal)                               | 2   | P2002493    | P2002493 | N/A      | N/A      |
| 8                                | Motor Bracket (Outside Seal)                              | 2   | P2002494    | P2002494 |          |          |
| 17                               | Setscrew Collar   | 2   | P2002492    | P2002492 |          |          |
| 17                               | Set Screw   | 6   | P71386      | P71386   |          |          |
| 18                               | Motor Bracket Capscrew                                    | 8   | DJ0071      | DJ0071   |          |          |
| 19                               | Motor Key   | 2   | AC1642      | AC1642   |          |          |
| 16                               | Coupler, Split  | 2   | P2002487    | P2002487 |          |          |
| 16                               | Capscrew  | 8   | DJ0042      | DJ0042   |          |          |
| 16                               | Hex Nut   | 8   | P44190      | P44190   |          |          |
| 16                               | Lockwasher  | 8   | P44620      | P44620   |          |          |
| MOTOR FRAMES 182TC-184TC         |   |     |             |          |          |          |
| 8                                | Motor Bracket (Inside Seal)                               | 2   | P70905      | P70905   | P70905   | N/A      |
| 8                                | Motor Bracket (Outside Seal)                              | 2   | P70906      | P70906   | P70906   |          |
| 17                               | Setscrew Collar   | 2   | P70995      | P70995   | P70995   |          |
| 17                               | Set Screw   | 6   | P71386      | P71386   | P71386   |          |
| 18                               | Motor Bracket Capscrew                                    | 8   | P13780      | P13780   | P13780   |          |
| 19                               | Motor Key   | 2   | P75189      | P75189   | P75189   |          |
| 16                               | Coupler, Split  | 2   | P2002864    | P2002864 | P2002864 |          |
| 16                               | Capscrew  | 8   | DJ0042      | DJ0042   | DJ0042   |          |
| 16                               | Hex Nut   | 8   | P44190      | P44190   | P44190   |          |
| 16                               | Lockwasher  | 8   | P44620      | P44620   | P44620   |          |

| ITEM                            | DESCRIPTION                            | QTY | 2.5X2.5X9.5 | 3X3X9.5  | 4X4X9.5  | 6X6X9.5  |
|---------------------------------|--|-----|-------------|----------|----------|----------|
| <b>MOTOR FRAMES 213TC-215TC</b> |  |     |             |          |          |          |
| 8                               | Motor Bracket (Inside Seal)            | 2   | P70905      | P70905   | P70905   | P70905   |
| 8                               | Motor Bracket (Outside Seal)           | 2   | P70906      | P70906   | P70906   | P70906   |
| 17                              | Setscrew Collar                        | 2   | P70996      | P70996   | P70996   | P70996   |
| 17                              | Set Screw                              | 6   | P71387      | P71387   | P71387   | P71387   |
| 18                              | Motor Bracket Capscrew                 | 8   | P13780      | P13780   | P13780   | P13780   |
| 19                              | Motor Key                              | 2   | AC0523      | AC0523   | AC0523   | AC0523   |
| 16                              | Coupler, Split                         | 2   | P2002865    | P2002865 | P2002865 | P2002865 |
| 16                              | Capscrew                               | 8   | P75206      | P75206   | P75206   | P75206   |
| 16                              | Hex Nut                                | 8   | P44190      | P44190   | P44190   | P44190   |
| 16                              | Lockwasher                             | 8   | P44620      | P44620   | P44620   | P44620   |
| <b>MOTOR FRAMES 254TC-256TC</b> |  |     |             |          |          |          |
| 8                               | Motor Bracket (Inside Seal)            | 2   | N/A         | N/A      | P70905   | P70905   |
| 8                               | Motor Bracket (Outside Seal)           | 2   |             |          | P70906   | P70906   |
| 17                              | Setscrew Collar                        | 2   |             |          | P70997   | P70997   |
| 17                              | Set Screw                              | 6   |             |          | P71387   | P71387   |
| 18                              | Motor Bracket Capscrew                 | 8   |             |          | P13780   | P13780   |
| 19                              | Motor Key                              | 2   |             |          | P75190   | P75190   |
| 16                              | Coupler, Split                         | 2   |             |          | P2002866 | P2002866 |
| 16                              | Capscrew                               | 8   |             |          | P75207   | P75207   |
| 16                              | Hex Nut                                | 8   |             |          | P44190   | P44190   |
| 16                              | Lockwasher                             | 8   |             |          | P44620   | P44620   |
| <b>FLUSH PIPE ASSEMBLY</b>      |  |     |             |          |          |          |
| 21                              | Nipple                                 | 2   | DL0025      | DL0025   | DL0025   | DL0028   |
| 21                              | Straight Tee                           | 2   | P75181      | P75181   | P75181   | P75181   |
| 21                              | Bushing, Hex 0.25MNPTx0.12FNPT - Steel | 2   | 511849      | 511849   | 511849   | 511849   |
| 21                              | Hose                                   | 2   | P2002543    | P2002543 | P2002543 | P2002544 |
| 21                              | Valve, vent                            | 2   | P75255      | P75255   | P75255   | P75255   |
| 21                              | Elbow, Street 0.25                     | 2   | AC0530      | AC0530   | AC0530   | AC0530   |
| 21                              | Bushing, Hex 0.25MNPTx0.12FNPT         | 2   | DF0003      | DF0003   | DF0003   | DF0003   |

| MOTOR FRAMES 284TC THROUGH 365TC |   |     |             |          |
|----------------------------------|---|-----|-------------|----------|
| ITEM                             | DESCRIPTION   | QTY | 2.5X2.5X9.5 | 6X6X9.5  |
| 1                                | Volute  | 1   | P2004945    | P2004929 |
|                                  | Pipe Plug 1/4   | 6   | P39040      | P39040   |
| 2                                | Volute Gasket   | 2   | P48690      | P48690   |
| 3                                | Volute Capscrew   | 24  | P03470      | P03470   |
| 4                                | Impeller (State Diameter) 9.5" Full Diameter              | 2   | P2000846    | P2000917 |
| 5                                | Throttle Bushing (Bearing)                                | 2   | P71379      | P71379   |
| 9                                | Impeller Bolt   | 2   | P13800      | P13800   |
| 10                               | Impeller Lockwasher                                       | 2   | J23875      | J23875   |
| 11                               | Impeller Washer   | 2   | P51230      | P51230   |
| 12                               | Impeller Key  | 2   | P49372      | P49372   |
| 13                               | Shaft   | 2   | P2002872    | P2002872 |
| 14                               | Coupler Key   | 2   | P75183      | P75183   |
| 15                               | Tapered Washer  | 2   | P2002875    | P2002875 |
| 15                               | Tapered Washer Capscrew                                   | 2   | 510830      | H52100   |
| 15                               | Tapered Washer Lockwasher                                 | 2   | P16690      | P16690   |
| 20                               | Guard   | 2   | P71384      | P71384   |
| 20                               | Guard Screw   | 8   | P86085      | P86085   |
| 22                               | Flapper assembly  | 1   | P2005003    | P2005006 |
| 23                               | Self sealing screw  | 2   | P2004967    | P2004967 |
| INSIDE SEAL MECHANICAL SEAL      |   |     |             |          |
| 6                                | Mechanical Seal Standard - EPR/Carbon/Ceramic/SS          | 2   | P75222      | P75222   |
| 6                                | Mechanical Seal Optional - EPR/SilCar/SilCar/SS           | 2   | P2001704    | P2001704 |
| 6                                | Mechanical Seal Optional - FMK (Viton®)/Carbon/Ceramic/SS | 2   | P75226      | P75226   |
| 6                                | Mechanical Seal Optional - EPR/Carbon/TungCar/SS          | 2   | P75224      | P75224   |
| 6                                | Cap   | 2   | P75216      | P75216   |
| 6                                | Capscrew  | 8   | H28100      | H28100   |
| 6                                | Gasket  | 2   | P75201      | P75201   |
| 6                                | Snap Ring   | 2   | P75219      | P75219   |
| 6                                | Washer  | 8   | P44580      | P44580   |
| OUTSIDE SEAL MECHANICAL SEAL     |   |     |             |          |
| 7                                | Mechanical Seal Standard - EPR/Carbon/Ceramic/SS          | 2   | P75203      | P75203   |
| 7                                | Mechanical Seal Optional - FMK (Viton®)/Carbon/Ceramic/SS | 2   | P2001064    | P2001064 |
| 7                                | Capscrew  | 8   | H52100      | H52100   |
| 7                                | Gland   | 2   | P75205      | P75205   |
| 7                                | Washer  | 8   | P44580      | P44580   |
| MOTOR FRAMES 284TC-286TC         |   |     |             |          |
| 8                                | Motor Bracket (Inside Seal)                               | 2   | P2004690    | P70914   |
| 8                                | Motor Bracket (Outside Seal)                              | 2   | P2004698    | P70915   |
| 17                               | Setscrew Collar   | 2   | P71373      | P71373   |
| 17                               | Set Screw   | 6   | P71388      | P71388   |
| 18                               | Motor Bracket Capscrew                                    | 8   | P13780      | P13780   |
| 19                               | Motor Key   | 2   | P75191      | P75191   |
| 16                               | Coupler, Split  | 2   | P2002868    | P2002868 |
| 16                               | Capscrew  | 8   | P44250      | P44250   |
| 16                               | Hex Nut   | 8   | P52380      | P52380   |
| 16                               | Lockwasher  | 8   | P16690      | P16690   |
| MOTOR FRAMES 284TSCTC-286TSCTC   |   |     |             |          |
| 8                                | Motor Bracket (Inside Seal)                               | 2   | P2004690    | N/A      |
| 8                                | Motor Bracket (Outside Seal)                              | 2   | P2004698    |          |
| 17                               | Setscrew Collar   | 2   | P70997      |          |
| 17                               | Set Screw   | 6   | P71387      |          |
| 18                               | Motor Bracket Capscrew                                    | 8   | P13780      |          |
| 19                               | Motor Key   | 2   | P75191      |          |
| 20                               | Guard   | 2   | P71384      |          |
| 20                               | Guard Screw   | 8   | P86085      |          |
| 16                               | Coupler, Split  | 2   | P2004697    |          |
| 16                               | Capscrew  | 8   | P44250      |          |
| 16                               | Hex Nut   | 8   | P52380      |          |
| 16                               | Lockwasher  | 8   | P16690      |          |

| ITEM                                | DESCRIPTION                            | QTY | 2.5X2.5X9.5 | 6X6X9.5  |
|-------------------------------------|--|-----|-------------|----------|
| <b>MOTOR FRAMES 324TSC-326TSC</b>   |  |     |             |          |
| 8                                   | Motor Bracket (Inside Seal)            | 2   | P2004691    | N/A      |
| 8                                   | Motor Bracket (Outside Seal)           | 2   | P2004699    |          |
| 17                                  | Setscrew Collar                        | 2   | P71373      |          |
| 17                                  | Set Screw                              | 6   | P71388      |          |
| 18                                  | Motor Bracket Capscrew                 | 8   | DJ0132      |          |
| 19                                  | Motor Key                              | 2   | P75192      |          |
| 20                                  | Guard                                  | 2   | P71384      |          |
| 20                                  | Guard Screw                            | 8   | P86085      |          |
| 16                                  | Coupler, Split                         | 2   | P2002869    |          |
| 16                                  | Capscrew                               | 8   | P44250      |          |
| 16                                  | Hex Nut                                | 8   | P52380      |          |
| 16                                  | Lockwasher                             | 8   | P16690      |          |
| <b>MOTOR FRAMES 364TSCTC-365TSC</b> |  |     |             |          |
| 8                                   | Motor Bracket (Inside Seal)            | 2   | P2004691    | N/A      |
| 8                                   | Motor Bracket (Outside Seal)           | 2   | P2004699    |          |
| 17                                  | Setscrew Collar                        | 2   | P71373      |          |
| 17                                  | Set Screw                              | 6   | P71388      |          |
| 18                                  | Motor Bracket Capscrew                 | 8   | DJ0132      |          |
| 19                                  | Motor Key                              | 2   | P75192      |          |
| 20                                  | Guard                                  | 2   | P71384      |          |
| 20                                  | Guard Screw                            | 8   | P86085      |          |
| 16                                  | Coupler, Split                         | 2   | P2002869    |          |
| 16                                  | Capscrew                               | 8   | P44250      |          |
| 16                                  | Hex Nut                                | 8   | P52380      |          |
| 16                                  | Lockwasher                             | 8   | P16690      |          |
| <b>FLUSH PIPE ASSEMBLY</b>          |  |     |             |          |
| 21                                  | Nipple                                 | 2   | DL0028      | DL0028   |
| 21                                  | Straight Tee                           | 2   | P75181      | P75181   |
| 21                                  | Bushing, Hex 0.25MNPTx0.12FNPT - Steel | 2   | 511849      | 511849   |
| 21                                  | Hose                                   | 2   | P2002544    | P2002544 |
| 21                                  | Valve, vent                            | 2   | P75255      | P75255   |
| 21                                  | Elbow, Street 0.25                     | 2   | AC0530      | AC0530   |
| 21                                  | Bushing, Hex 0.25MNPTx0.12FNPT         | 2   | DF0003      | DF0003   |

| MOTOR FRAMES 143TC THROUGH 256TC |   |     |          |          |
|----------------------------------|---|-----|----------|----------|
| ITEM                             | DESCRIPTION   | QTY | 3X3X11   | 4X4X11   |
| 1                                | Volute  | 1   | P2004746 | P2004890 |
|                                  | Pipe Plug 1/4   | 6   | P39040   | P39040   |
| 2                                | Volute Gasket   | 2   | P80765   | P80765   |
| 3                                | Volute Capscrew   | 32  | P13780   | P13780   |
| 4                                | Impeller (State Diameter) 11" Full Diameter               | 2   | P2000874 | P2001171 |
| 5                                | Throttle Bushing (Bearing)                                | 2   | P71378   | P71378   |
| 9                                | Impeller Bolt   | 2   | P52350   | P52350   |
| 10                               | Impeller Lockwasher ==                                    | 2   | J23874   | J23874   |
| 11                               | Impeller Washer   | 2   | P46380   | P46380   |
| 12                               | Impeller Key  | 2   | P49369   | P49369   |
| 13                               | Shaft   | 2   | P2002870 | P2002870 |
| 14                               | Coupler Key   | 2   | P75182   | P75182   |
| 15                               | Tapered Washer  | 2   | P2002874 | P2002874 |
| 15                               | Tapered Washer Capscrew                                   | 2   | 510830   | 510830   |
| 15                               | Tapered Washer Lockwasher                                 | 2   | P16690   | P16690   |
| 20                               | Guard   | 2   | P71380   | P71380   |
| 20                               | Guard Screw   | 8   | P86085   | P86085   |
| 22                               | Flapper assembly  | 1   | P2005004 | P2005008 |
| 23                               | Self sealing screw  | 2   | P2004967 | P2004967 |
| INSIDE SEAL MECHANICAL SEAL      |   |     |          |          |
| 6                                | Mechanical Seal Standard - EPR/Carbon/Ceramic/SS          | 2   | P75221   | P75221   |
| 6                                | Mechanical Seal Optional - EPR/SilCar/SilCar/SS           | 2   | P2001703 | P2001703 |
| 6                                | Mechanical Seal Optional - FMK (Viton®)/Carbon/Ceramic/SS | 2   | P75225   | P75225   |
| 6                                | Mechanical Seal Optional - EPR/Carbon/TungCar/SS          | 2   | P75223   | P75223   |
| 6                                | Cap   | 2   | P75214   | P75214   |
| 6                                | Capscrew  | 8   | H28100   | H28100   |
| 6                                | Gasket  | 2   | P85077   | P85077   |
| 6                                | Snap Ring   | 2   | P75218   | P75218   |
| 6                                | Washer  | 8   | P44580   | P44580   |
| OUTSIDE SEAL MECHANICAL SEAL     |   |     |          |          |
| 7                                | Mechanical Seal Standard - EPR/Carbon/Ceramic/SS          | 2   | P75202   | P75202   |
| 7                                | Mechanical Seal Option - FMK (Viton®)/Carbon/Ceramic/SS   | 2   | P2001063 | P2001063 |
| 7                                | Capscrew  | 8   | H52100   | H52100   |
| 7                                | Gland   | 2   | P75204   | P75204   |
| 7                                | Washer  | 8   | P44580   | P44580   |
| MOTOR FRAMES 213TC-215TC         |   |     |          |          |
| 8                                | Motor Bracket (Inside Seal)                               | 2   | P70893   | P70893   |
| 8                                | Motor Bracket (Outside Seal)                              | 2   | P70894   | P70894   |
| 17                               | Setscrew Collar   | 2   | P70996   | P70996   |
| 17                               | Set Screw   | 6   | P71387   | P71387   |
| 18                               | Motor Bracket Capscrew                                    | 8   | P13780   | P13780   |
| 19                               | Motor Key   | 2   | AC0523   | AC0523   |
| 16                               | Coupler, Split  | 2   | P2002865 | P2002865 |
| 16                               | Capscrew  | 8   | P75206   | P75206   |
| 16                               | Hex Nut   | 8   | P44190   | P44190   |
| 16                               | Lockwasher  | 8   | P44620   | P44620   |
| MOTOR FRAMES 254TSCTC-256TSCTC   |   |     |          |          |
| 8                                | Motor Bracket (Inside Seal)                               | 2   | P70893   | P70893   |
| 8                                | Motor Bracket (Outside Seal)                              | 2   | P70894   | P70894   |
| 17                               | Setscrew Collar   | 2   | P70997   | P70997   |
| 17                               | Set Screw   | 6   | P71387   | P71387   |
| 18                               | Motor Bracket Capscrew                                    | 8   | P13780   | P13780   |
| 19                               | Motor Key   | 2   | P75190   | P75190   |
| 16                               | Coupler, Split  | 2   | P2002866 | P2002866 |
| 16                               | Capscrew  | 8   | P75207   | P75207   |
| 16                               | Hex Nut   | 8   | P44190   | P44190   |
| 16                               | Lockwasher  | 8   | P44620   | P44620   |

| ITEM                | DESCRIPTION                            | QTY | 3X3X11   | 4X4X11   |
|---------------------|--|-----|----------|----------|
| FLUSH PIPE ASSEMBLY |  |     |          |          |
| 21                  | Nipple                                 | 2   | DL0025   | DL0025   |
| 21                  | Straight Tee                           | 2   | P75181   | P75181   |
| 21                  | Bushing, Hex 0.25MNPTx0.12FNPT - Steel | 2   | 511849   | 511849   |
| 21                  | Hose                                   | 2   | P2002543 | P2002544 |
| 21                  | Valve, vent                            | 2   | P75255   | P75255   |
| 21                  | Elbow, Street 0.25                     | 2   | AC0530   | AC0530   |
| 21                  | Bushing, Hex 0.25MNPTx0.12FNPT         | 2   | DF0003   | DF0003   |

| MOTOR FRAMES 284TC THROUGH 365TSC |   |     |          |          |
|-----------------------------------|---|-----|----------|----------|
| ITEM                              | DESCRIPTION   | QTY | 4X4X11   | 6X6X11   |
| 1                                 | Volute  | 1   | P2004890 | P2004937 |
|                                   | Pipe Plug 1/4   | 6   | P39040   | P39040   |
| 2                                 | Volute Gasket   | 2   | P80765   | P80765   |
| 3                                 | Volute Capscrew   | 32  | P13780   | P13780   |
| 4                                 | Impeller (State Diameter) 11" Full Diameter               | 2   | P2001173 | P2001146 |
| 5                                 | Throttle Bushing (Bearing)                                | 2   | P71379   | P71379   |
| 9                                 | Impeller Bolt   | 2   | P13800   | P13800   |
| 10                                | Impeller Lockwasher                                       | 2   | J23875   | J23875   |
| 11                                | Impeller Washer   | 2   | P51230   | P51230   |
| 12                                | Impeller Key  | 2   | P49372   | P49372   |
| 13                                | Shaft   | 2   | P2002872 | P2002872 |
| 14                                | Coupler Key   | 2   | P75183   | P75183   |
| 15                                | Tapered Washer  | 2   | P2002875 | P2002875 |
| 15                                | Tapered Washer Capscrew                                   | 2   | 510830   | 510830   |
| 15                                | Tapered Washer Lockwasher                                 | 2   | P16690   | P16690   |
| 20                                | Guard   | 2   | P71381   | P71381   |
| 20                                | Guard Screw   | 8   | P86085   | P86085   |
| 22                                | Flapper assembly  | 1   | P2005008 | P2005006 |
| 23                                | Self sealing screw  | 2   | P2004967 | P2004967 |
| INSIDE SEAL MECHANICAL SEAL       |   |     |          |          |
| 6                                 | Mechanical Seal Standard - EPR/Carbon/Ceramic/SS          | 2   | P75222   | P75222   |
| 6                                 | Mechanical Seal Optional - EPR/SilCar/SilCar/SS           | 2   | P2001704 | P2001704 |
| 6                                 | Mechanical Seal Optional - FMK (Viton®)/Carbon/Ceramic/SS | 2   | P75226   | P75226   |
| 6                                 | Mechanical Seal Optional - EPR/Carbon/TungCar/SS          | 2   | P75224   | P75224   |
| 6                                 | Cap   | 2   | P75216   | P75216   |
| 6                                 | Capscrew  | 8   | H28100   | H28100   |
| 6                                 | Gasket  | 2   | P75201   | P75201   |
| 6                                 | Snap Ring   | 2   | P75219   | P75219   |
| 6                                 | Washer  | 8   | P44580   | P44580   |
| OUTSIDE SEAL MECHANICAL SEAL      |   |     |          |          |
| 7                                 | Mechanical Seal Standard - EPR/Carbon/Ceramic/SS          | 2   | P75203   | P75203   |
| 7                                 | Mechanical Seal Optional - FMK (Viton®)/Carbon/Ceramic/SS | 2   | P2001064 | P2001064 |
| 7                                 | Capscrew  | 8   | H52100   | H52100   |
| 7                                 | Gland   | 2   | P75205   | P75205   |
| 7                                 | Washer  | 8   | P44580   | P44580   |
| MOTOR FRAMES 284TC-286TC          |   |     |          |          |
| 8                                 | Motor Bracket (Inside Seal)                               | 2   | N/A      | P70939   |
| 8                                 | Motor Bracket (Outside Seal)                              | 2   |          | P70940   |
| 17                                | Setscrew Collar   | 2   |          | P71373   |
| 17                                | Set Screw   | 6   |          | P71388   |
| 18                                | Motor Bracket Capscrew                                    | 8   |          | DJ0132   |
| 19                                | Motor Key   | 2   |          | P75192   |
| 16                                | Coupler, Split  | 2   |          | P2002869 |
| 16                                | Capscrew  | 8   |          | P44250   |
| 16                                | Hex Nut   | 8   |          | P52380   |
| 16                                | Lockwasher  | 8   |          | P16690   |
| FLUSH ASSEMBLY                    |   |     |          |          |
| 21                                | Nipple  | 2   | DL0025   | DL0028   |
| 21                                | Straight Tee  | 2   | P75181   | P75181   |
| 21                                | Bushing, Hex 0.25MNPTx0.12FNPT - Steel                    | 2   | 511849   | 511849   |
| 21                                | Hose  | 2   | P2002544 | P2002544 |
| 21                                | Valve, vent   | 2   | P75255   | P75255   |
| 21                                | Elbow, Street 0.25  | 2   | AC0530   | AC0530   |
| 21                                | Bushing, Hex 0.25MNPTx0.12FNPT                            | 2   | DF0003   | DF0003   |

# Xylem |'zīləm|

- 1) The tissue in plants that brings water upward from the roots;
- 2) a leading global water technology company.

We're a global team unified in a common purpose: creating advanced technology solutions to the world's water challenges. Developing new technologies that will improve the way water is used, conserved, and re-used in the future is central to our work. Our products and services move, treat, analyze, monitor and return water to the environment, in public utility, industrial, residential and commercial building services settings. Xylem also provides a leading portfolio of smart metering, network technologies and advanced analytics solutions for water, electric and gas utilities. In more than 150 countries, we have strong, long-standing relationships with customers who know us for our powerful combination of leading product brands and applications expertise with a strong focus on developing comprehensive, sustainable solutions.

**For more information on how Xylem can help you, go to [www.xylem.com](http://www.xylem.com)**

We value your feedback. Please take our 3 question survey at **[bellgossett.com/survey](http://bellgossett.com/survey)** to let us know how we are doing.



Xylem Inc.  
8200 N. Austin Avenue  
Morton Grove, Illinois 60053  
Phone: (847) 966-3700  
Fax: (847) 965-8379  
[www.xylem.com/bellgossett](http://www.xylem.com/bellgossett)

Bell & Gossett is a trademark of Xylem Inc. or one of its subsidiaries.  
© 2020 Xylem Inc. CP-20e825C-101-PL September 2020