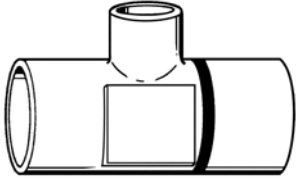


<b>JOB:</b>	<b>REPRESENTATIVE:</b>	
<b>UNIT TAG:</b>	<b>ORDER NO.</b>	<b>DATE:</b>
<b>ENGINEER:</b>	<b>SUBMITTED BY:</b>	<b>DATE:</b>
<b>CONTRACTOR:</b>	<b>APPROVED BY:</b>	<b>DATE:</b>



# Red Ring<sup>®</sup> Copper Monoflo<sup>®</sup> Fittings

## Valves and Fittings

**DESCRIPTION**

B&G Monoflo Fittings make possible the use of a single pipe to act as both a supply and return main. These Fittings connect the risers to the main and assure proper diversion of water into each heating unit, whether radiator, convector or baseboard, and regardless of its position in the system.

Except for the 3/4" fitting, they can be installed at either the return or supply riser or both depending on the pressure drop through the side branch circuit and terminal unit, with the other riser connection being a common tee.

Red Ring Monoflo fittings can be used for most installations where cast iron or non-ferrous baseboards, free standing radiation, or convectors are installed.

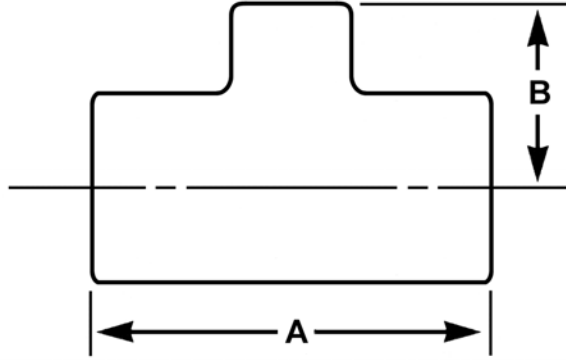
**SCHEDULE**

SIZE INCHES	PART NUMBER	TAGGING INFORMATION	QUANTITY
3/4x1/2*	108119		
1x1/2	108120		
1x3/4	108121		
1-1/4x1/2	108122		
1-1/4x3/4	108123		
1-1/2x3/4	108124		
1-1/2x1	108125		
2x3/4	108126		
2x1	108127		

\*Return only.

**PERFORMANCE CHARACTERISTICS**

Maximum Working Pressure - 150 PSIG (1,034.3 kPa)  
 Maximum Operating Temperature - 300°F (148.9°C)



**DIMENSIONS AND WEIGHTS**

SIZE INCHES	DIMENSIONS-INCHES (MM)		APPROX. SHPG.WT. LBS. (Kg)
	A	B	
3/4x1/2*	2-7/32 (56)	1 (25)	1/4 (0.1)
1x1/2	2-9/16 (65)	1-5/32 (30)	1/2 (0.23)
1x3/4	2-3/4 (70)	1-3/8 (35)	1/2 (0.23)
1-1/4x1/2	2-3/4 (70)	1-7/32 (31)	1/2 (0.23)
1-1/4x3/4	2-27/32 (72)	1-3/8 (35)	1/2 (0.23)
1-1/2x3/4	3-3/32 (78)	1-11/16 (42)	1-1/4 (0.57)
1-1/2x1	3-3/8 (86)	1-11/16 (42)	1-1/4 (0.57)
2x3/4	3-1/2 (89)	1-27/32 (47)	1-3/4 (0.79)
2x1	3-13/16 (97)	2-1/32 (52)	1-3/4 (0.79)

\*Return only.

**TYPICAL SPECIFICATION**

Furnish and install as shown on plans diverting tees of sizes indicated. The tees shall contain calibrated nozzles accurately sized to produce proper diversion to the radiation. The tees must be color coded to assure proper installation and must be suitable for downfeed, side feed or upfeed applications.

Manufacturer Xylem Bell & Gossett \_\_\_\_\_  
 Copper Monoflo Fittings.

Xylem Inc.  
 8200 N. Austin Avenue  
 Morton Grove, IL 60053  
 Phone: (847)966-3700  
 Fax: (847)965-8379  
 www.xyleminc.com/brands/bellgossett

