

Series e-HSC

Double Suction Centrifugal Pumps

REPLACEMENT PARTS

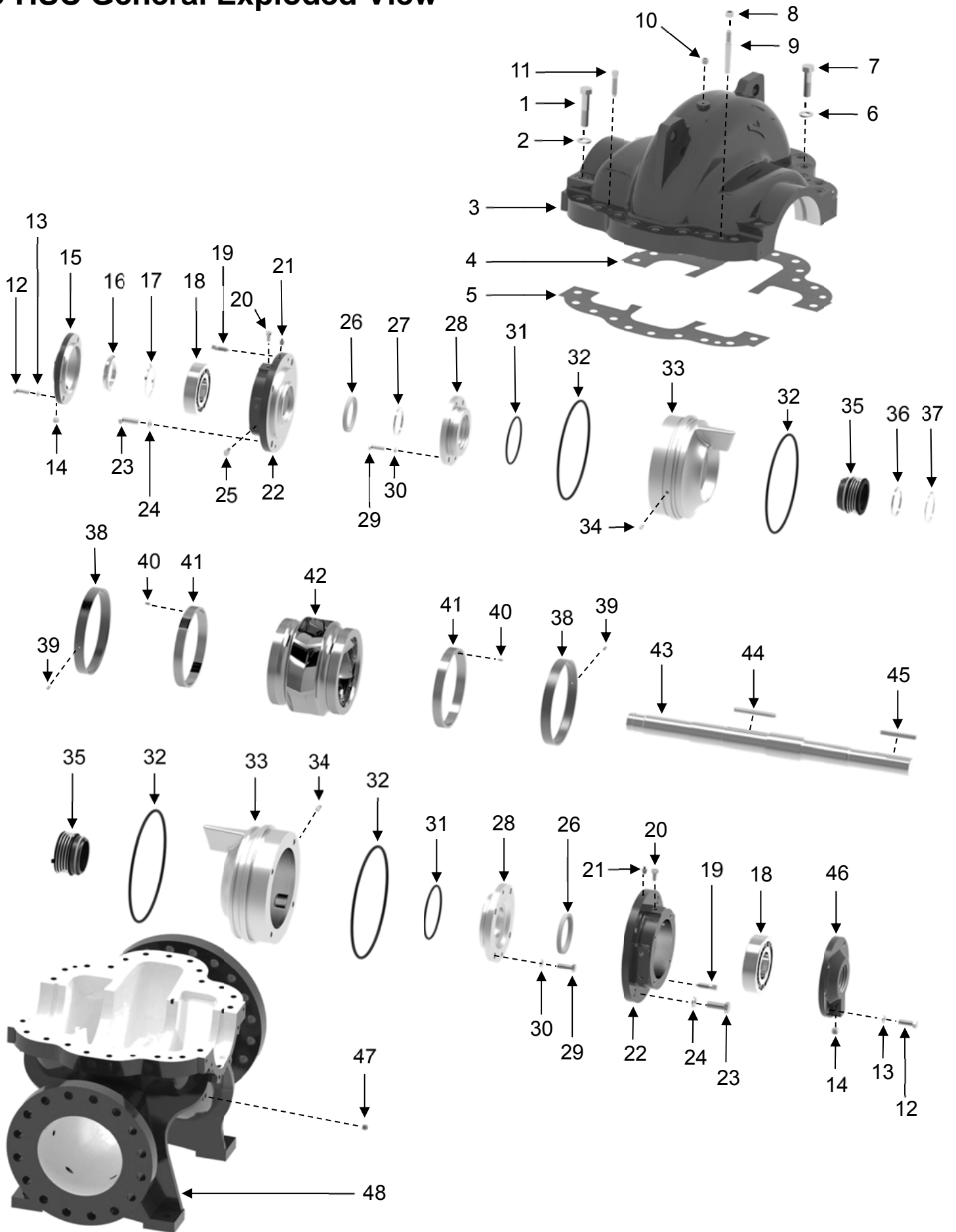
INDEX

e-HSC Pump Model List	2
e-HSC Pump General Exploded View	3
General Parts	5
Casings	51
Shafts	53
Impellers, Impeller and Wear Ring Kits	55
Impellers	56
Impeller, Impeller Wear Ring & Casing Wear Ring Kits	58
Impeller & Casing Wear Ring Kits	60
Mechanical Seals	62
Type MR1	63
Type MR2	65
Seal Replacement Kit	67

e-HSC Model List

e-HSC Double Suction Centrifugal Pump Model List		
No.	Model	Model
1	2.5X4X10.5	2.5X4X10
2	3X4X12.5	3X4X12
3	3X5X8.5	3X5X8
4	3X5X11	3X5X10.5
5	3X5X13.5	3X5X13
6	4X6X10	4X6X9.5
7	4X6X13	4X6X12
8	4X6X16	4X6X15.5
9	5X6X9	5X6X8.5
10	5X8X9.5	5X8X9
11	5X8X12	5X8X11
12	5X8X15.5	5X8X14.5
13	5X8X19	5X8X18
14	6X8X6.5	6X8X6
15	6X8X12	6X8X11
16	6X8X14	6X8X13.5
17	6X8X18	6X8X17
18	6X8X22	6X8X21
19	6X10X11	6X10X10.5
20	8X8X8	8X8X7.5
21	8X10X10	8X10X9.5
22	8X10X13.5	8X10X13
23	8X10X17	8X10X16
24	8X10X21	8X10X20
25	8X10X26	8X10X25
26	10X10X8	10X10X7.5
27	10X12X15.5	10X12X14.5
28	10X12X19	10X12X18
29	10X12X24	10X12X23
30	12X12X9	12X12X8.5
31	12X12X10	12X12X9.5
32	12X14X13	12X14X12.5
33	12X16X18	12X16X17
34	12X16X22	12X16X21
35	12X16X28	12X16X27
36	14X14X12	14X14X11
37	14X16X15	14X16X14.5
38	14X16X27.5	14X16X26
39	14X18X18	14X18X17
40	14X18X21	14X18X20
41	16X16X13.5	16X16X13
42	16X20X20.5	16X20X19.5
43	16X20X23	16X20X22
44	18X20X15.5	18X20X14.5
45	20X24X18	20X24X17

e-HSC General Exploded View



LEGEND

NO.	Description	Qty.	NO.	Description	Qty.
1	Large Casing Bolt	4	25	Sensor Screw	10
2	Large Casing Washer	4	26	Lip Seal	2
3	Upper Casing	1	27	Shoulder Ring	2
4	Paper Pad Inlet (Gasket)	1	28	Seal Gland	2
5	Paper Pad Outlet (Gasket)	1	29	Bolt (Seal Gland)	8
6	Casing Washer	*	30	Washer (Seal Gland)	8
7	Casing Bolt	*	31	O-Ring (Seal Gland)	2
8	Tapered Pin Nut	2	32	O-Ring (Stuffing Box)	4
9	Tapered Pin	2	33	Stuffing Box	8
10	Plug ½" (Upper Casing)	1	34	Pin (Seal Body)	2
11	Jacking Screw	4	35	Mechanical Seal	2
12	Bolt (Bearing Gland)	8	36	Shoulder Ring (MS)	1
13	Washer (Bearing Gland)	8	37	Circlip (Snap Ring)	1
14	Plug (Bearing Gland)	2	38	Casing Wear Ring (Optional)	2
15	Bearing Gland B (With Gasket)	2	39	Pin (CWR - Optional)	2
16	Locknut (Bearing)	1	40	Screw (Optional - set 120° apart)	6
17	Lockwasher (Bearing)	1	41	Impeller Wear Ring (Optional)	2
18	Deep Groove Ball Bearing	2	42	Impeller	1
19	Jacking Screw (Bearing Housing)	4	43	Shaft	1
20	Screw (BH Top)	2	44	Impeller Key	1
21	Grease Cup	2	45	Coupling Key	1
22	Bearing Housing	2	46	Bearing Gland A (With Gasket)	1
23	Bolt (Bearing Housing)	8	47	Plug	10
24	Washer (Bearing Housing)	8	48	Lower Casing	1

*Quantity varies based on pump size

e-HSC Pump

General Parts Listings

CAT. NO.	PART DESCRIPTION	QTY.	MATL.	e-HSC 2.5X4X10.5	e-HSC 2.5X4X10	CAT. NO.
1	Large Casing Bolt	4	Steel	P6010994	→	1
2	Large Casing Washer	4	Steel	P6010259	→	2
4	Paper Pad (Inlet)	1	Cardboard	P6013350	→	4
5	Paper Pad (Outlet)	1	Cardboard	P6013351	→	5
6	Casing Washer	8	Steel	P6010259	→	6
7	Casing Bolt	8	Steel	P6010995	→	7
8	Tapered Pin Nut	2	Steel	P6010012	→	8
9	Tapered Pin	2	Steel	P6010082	→	9
10	Plug 1/2" (Upper Casing)	1	Steel	P6010068	→	10
11	Jacking Screw	2	Steel	P6010002	→	11
12	Bolts (Bearing Gland)	8	Steel	P6010240	→	12
13	Washer (Bearing Gland)	8	Steel	P6010249	→	13
14	Plug (Bearing Gland)	2	Steel	P6010066	→	14
15A	Bearing Gland Gasket	2	Cardboard	P6010990	→	15A
15	Bearing Gland B (Outboard)	1	Cast Iron	P6010909	→	15
16	Locknut (Bearing)	1	Steel	P6010980	→	16
17	Lockwasher (Bearing)	1	Steel	P6010981	→	17
18	Deep Groove Ball Bearing	2	Steel	P6010989	→	18
19	Jacking Screw (BH)	4	Steel	P6010265	→	19
20	Screw (BH top)	2	Steel	P6010010	→	20
21	Grease Cup	2	Brass	P6010235	→	21
22	Bearing Housing	2	Cast Iron	P6010973	→	22
23	Bolt (Bearing Housing)	8	Steel	P6010009	→	23
24	Washer (Bearing Housing)	8	Steel	P6010025	→	24
25	Screw (Vibration sensor)	6	Steel	P6010067	→	25
25A	Screw (Temperature sensor)	4	Steel	P6010066	→	25A
26	Lip Seal	2	NBR	P6010988	→	26
27	Shoulder Ring	1	Steel	P6010982	→	27
28	Seal Gland	2	Cast Iron	P6010971	→	28
29	Bolt (Seal Gland)	8	Steel	P6010240	→	29
30	Washer (Seal Gland)	8	Steel	P6010239	→	30
31	O-Ring (Seal Gland)	2	FKM	P6010987	→	31
32	O-Ring (Stuffing Box)	4	FKM	P6010983	→	32
33	Stuffing Box	2	Cast Iron	P6013506	→	33
34	Pin (Seal Body)	2	Steel	P6010226	→	34
35	Mechanical Seal*	2				35
36	Shoulder Ring (MS)	1	SS 304	P6010984	→	36
37	Circlip (Snap Ring)	1	Steel	P6010985	→	37
38	Casing Wear Ring	2	Bronze	P6013514	→	38
39	Pin (CWR)	2	Steel	P6010226	→	39
42	Impeller*	1				42
43	Shaft*	1				43
44	Impeller Key	1	Steel	P6010986	→	44
45	Coupling Key	1	Steel	P6010991	→	45
46	Bearing Gland A (Inboard)	1	Cast Iron	P6010911	→	46
47	Plug 1/2" (Lower Casing)	10	Steel	P6010069	→	47
48	Casing*	1				48

*Denotes catalog item with multiple material configurations. Refer to item-specific replacement part table
"→" Denotes identical part number

CAT. NO.	PART DESCRIPTION	QTY.	MATL.	e-HSC 3X4X12.5	e-HSC 3X4X12	CAT. NO.
1	Large Casing Bolt	4	Steel	P6010257	→	1
2	Large Casing Washer	4	Steel	P6010026	→	2
4	Paper Pad (Inlet)	1	Cardboard	P6013132	→	4
5	Paper Pad (Outlet)	1	Cardboard	P6013133	→	5
6	Casing Washer	11	Steel	P6010026	→	6
7	Casing Bolt	11	Steel	P6010017	→	7
8	Tapered Pin Nut	2	Steel	P6010012	→	8
9	Tapered Pin	2	Steel	P6010030	→	9
10	Plug 1/2" (Upper Casing)	1	Steel	P6010069	→	10
11	Jacking Screw	2	Steel	P6010002	→	11
12	Bolts (Bearing Gland)	8	Steel	P6010240	→	12
13	Washer (Bearing Gland)	8	Steel	P6010239	→	13
14	Plug (Bearing Gland)	2	Steel	P6010066	→	14
15A	Bearing Gland Gasket	2	Cardboard	P6010990	→	15A
15	Bearing Gland B (Outboard)	1	Cast Iron	P6010909	→	15
16	Locknut (Bearing)	1	Steel	P6010980	→	16
17	Lockwasher (Bearing)	1	Steel	P6010981	→	17
18	Deep Groove Ball Bearing	2	Steel	P6010989	→	18
19	Jacking Screw (BH)	4	Steel	P6010265	→	19
20	Screw (BH top)	2	Steel	P6010010	→	20
21	Grease Cup	2	Brass	P6010235	→	21
22	Bearing Housing	2	Cast Iron	P6010973	→	22
23	Bolt (Bearing Housing)	8	Steel	P6010009	→	23
24	Washer (Bearing Housing)	8	Steel	P6010025	→	24
25	Screw (Vibration sensor)	6	Steel	P6010067	→	25
25A	Screw (Temperature sensor)	4	Steel	P6010066	→	25A
26	Lip Seal	2	NBR	P6010988	→	26
27	Shoulder Ring	1	Steel	P6010982	→	27
28	Seal Gland	2	Cast Iron	P6010971	→	28
29	Bolt (Seal Gland)	8	Steel	P6010240	→	29
30	Washer (Seal Gland)	8	Steel	P6010239	→	30
31	O-Ring (Seal Gland)	2	FKM	P6010987	→	31
32	O-Ring (Stuffing Box)	4	FKM	P6010983	→	32
33	Stuffing Box	2	Cast Iron	P6010912	→	33
34	Pin (Seal Body)	2	Steel	P6010226	→	34
35	Mechanical Seal*	2				35
36	Shoulder Ring (MS)	1	SS 304	P6010984	→	36
37	Circlip (Snap Ring)	1	Steel	P6010985	→	37
38	Casing Wear Ring	2	Bronze	P6010974	→	38
39	Pin (CWR)	2	Steel	P6010226	→	39
42	Impeller*	1				42
43	Shaft*	1				43
44	Impeller Key	1	Steel	P6010986	→	44
45	Coupling Key	1	Steel	P6010991	→	45
46	Bearing Gland A (Inboard)	1	Cast Iron	P6010911	→	46
47	Plug 1/2" (Lower Casing)	10	Steel	P6010069	→	47
48	Casing*	1				48

*Denotes catalog item with multiple material configurations. Refer to item-specific replacement part table
"→" Denotes identical part number

CAT. NO.	PART DESCRIPTION	QTY.	MATL.	e-HSC 3X5X8.5	e-HSC 3X5X8	CAT. NO.
1	Large Casing Bolt	4	Steel	P6010994	→	1
2	Large Casing Washer	4	Steel	P6010259	→	2
4	Paper Pad (Inlet)	1	Cardboard	P6012500	→	4
5	Paper Pad (Outlet)	1	Cardboard	P6012501	→	5
6	Casing Washer	11	Steel	P6010259	→	6
7	Casing Bolt	11	Steel	P6010995	→	7
8	Tapered Pin Nut	2	Steel	P6010012	→	8
9	Tapered Pin	2	Steel	P6010082	→	9
10	Plug 1/2" (Upper Casing)	1	Steel	P6010069	→	10
11	Jacking Screw	2	Steel	P6010002	→	11
12	Bolts (Bearing Gland)	8	Steel	P6010240	→	12
13	Washer (Bearing Gland)	8	Steel	P6010239	→	13
14	Plug (Bearing Gland)	2	Steel	P6010066	→	14
15A	Bearing Gland Gasket	2	Cardboard	P6010990	→	15A
15	Bearing Gland B (Outboard)	1	Cast Iron	P6010909	→	15
16	Locknut (Bearing)	1	Steel	P6010980	→	16
17	Lockwasher (Bearing)	1	Steel	P6010981	→	17
18	Deep Groove Ball Bearing	2	Steel	P6010989	→	18
19	Jacking Screw (BH)	4	Steel	P6010265	→	19
20	Screw (BH top)	2	Steel	P6010010	→	20
21	Grease Cup	2	Brass	P6010235	→	21
22	Bearing Housing	2	Cast Iron	P6010973	→	22
23	Bolt (Bearing Housing)	8	Steel	P6010009	→	23
24	Washer (Bearing Housing)	8	Steel	P6010025	→	24
25	Screw (Vibration sensor)	6	Steel	P6010067	→	25
25A	Screw (Temperature sensor)	4	Steel	P6010066	→	25A
26	Lip Seal	2	NBR	P6010988	→	26
27	Shoulder Ring	1	Steel	P6010982	→	27
28	Seal Gland	2	Cast Iron	P6010971	→	28
29	Bolt (Seal Gland)	8	Steel	P6010240	→	29
30	Washer (Seal Gland)	8	Steel	P6010239	→	30
31	O-Ring (Seal Gland)	2	FKM	P6010987	→	31
32	O-Ring (Stuffing Box)	4	FKM	P6010983	→	32
33	Stuffing Box	2	Cast Iron	P6010912	→	33
34	Pin (Seal Body)	2	Steel	P6010226	→	34
35	Mechanical Seal*	2				35
36	Shoulder Ring (MS)	1	SS 304	P6010984	→	36
37	Circlip (Snap Ring)	1	Steel	P6010985	→	37
38	Casing Wear Ring	2	Bronze	P6010974	→	38
39	Pin (CWR)	2	Steel	P6010226	→	39
42	Impeller*	1				42
43	Shaft*	1				43
44	Impeller Key	1	Steel	P6010986	→	44
45	Coupling Key	1	Steel	P6010991	→	45
46	Bearing Gland A (Inboard)	1	Cast Iron	P6010911	→	46
47	Plug 1/2" (Lower Casing)	10	Steel	P6010069	→	47
48	Casing*	1				48

*Denotes catalog item with multiple material configurations. Refer to item-specific replacement part table
"→" Denotes identical part number

CAT. NO.	PART DESCRIPTION	QTY.	MATL.	e-HSC 3X5X11	e-HSC 3X5X10.5	CAT. NO.
1	Large Casing Bolt	4	Steel	P6010994	→	1
2	Large Casing Washer	4	Steel	P6010259	→	2
4	Paper Pad (Inlet)	1	Cardboard	P6010992	→	4
5	Paper Pad (Outlet)	1	Cardboard	P6010993	→	5
6	Casing Washer	12	Steel	P6010259	→	6
7	Casing Bolt	12	Steel	P6010995	→	7
8	Tapered Pin Nut	2	Steel	P6010012	→	8
9	Tapered Pin	2	Steel	P6010082	→	9
10	Plug 1/2" (Upper Casing)	1	Steel	P6010069	→	10
11	Jacking Screw	2	Steel	P6010002	→	11
12	Bolts (Bearing Gland)	8	Steel	P6010240	→	12
13	Washer (Bearing Gland)	8	Steel	P6010239	→	13
14	Plug (Bearing Gland)	2	Steel	P6010066	→	14
15A	Bearing Gland Gasket	2	Cardboard	P6010990	→	15A
15	Bearing Gland B (Outboard)	1	Cast Iron	P6010909	→	15
16	Locknut (Bearing)	1	Steel	P6010980	→	16
17	Lockwasher (Bearing)	1	Steel	P6010981	→	17
18	Deep Groove Ball Bearing	2	Steel	P6010989	→	18
19	Jacking Screw (BH)	4	Steel	P6010265	→	19
20	Screw (BH top)	2	Steel	P6010010	→	20
21	Grease Cup	2	Brass	P6010235	→	21
22	Bearing Housing	2	Cast Iron	P6010973	→	22
23	Bolt (Bearing Housing)	8	Steel	P6010009	→	23
24	Washer (Bearing Housing)	8	Steel	P6010025	→	24
25	Screw (Vibration sensor)	6	Steel	P6010067	→	25
25A	Screw (Temperature sensor)	4	Steel	P6010066	→	25A
26	Lip Seal	2	NBR	P6010988	→	26
27	Shoulder Ring	1	Steel	P6010982	→	27
28	Seal Gland	2	Cast Iron	P6010971	→	28
29	Bolt (Seal Gland)	8	Steel	P6010240	→	29
30	Washer (Seal Gland)	8	Steel	P6010239	→	30
31	O-Ring (Seal Gland)	2	FKM	P6010987	→	31
32	O-Ring (Stuffing Box)	4	FKM	P6010983	→	32
33	Stuffing Box	2	Cast Iron	P6010912	→	33
34	Pin (Seal Body)	2	Steel	P6010226	→	34
35	Mechanical Seal*	2				35
36	Shoulder Ring (MS)	1	SS 304	P6010984	→	36
37	Circlip (Snap Ring)	1	Steel	P6010985	→	37
38	Casing Wear Ring	2	Bronze	P6010974	→	38
39	Pin (CWR)	2	Steel	P6010226	→	39
42	Impeller*	1				42
43	Shaft*	1				43
44	Impeller Key	1	Steel	P6010986	→	44
45	Coupling Key	1	Steel	P6010991	→	45
46	Bearing Gland A (Inboard)	1	Cast Iron	P6010911	→	46
47	Plug 1/2" (Lower Casing)	10	Steel	P6010069	→	47
48	Casing*	1				48

*Denotes catalog item with multiple material configurations. Refer to item-specific replacement part table
"→" Denotes identical part number

CAT. NO.	PART DESCRIPTION	QTY.	MATL.	e-HSC 3X5X13.5	e-HSC 3X5X13	CAT. NO.
1	Large Casing Bolt	4	Steel	P6010994	→	1
2	Large Casing Washer	4	Steel	P6010259	→	2
4	Paper Pad (Inlet)	1	Cardboard	P6013134	→	4
5	Paper Pad (Outlet)	1	Cardboard	P6013135	→	5
6	Casing Washer	10	Steel	P6010259	→	6
7	Casing Bolt	10	Steel	P6010995	→	7
8	Tapered Pin Nut	2	Steel	P6010012	→	8
9	Tapered Pin	2	Steel	P6010082	→	9
10	Plug 1/2" (Upper Casing)	1	Steel	P6010069	→	10
11	Jacking Screw	2	Steel	P6010002	→	11
12	Bolts (Bearing Gland)	8	Steel	P6010240	→	12
13	Washer (Bearing Gland)	8	Steel	P6010239	→	13
14	Plug (Bearing Gland)	2	Steel	P6010066	→	14
15A	Bearing Gland Gasket	2	Cardboard	P6010990	→	15A
15	Bearing Gland B (Outboard)	1	Cast Iron	P6010909	→	15
16	Locknut (Bearing)	1	Steel	P6010980	→	16
17	Lockwasher (Bearing)	1	Steel	P6010981	→	17
18	Deep Groove Ball Bearing	2	Steel	P6010989	→	18
19	Jacking Screw (BH)	4	Steel	P6010265	→	19
20	Screw (BH top)	2	Steel	P6010010	→	20
21	Grease Cup	2	Brass	P6010235	→	21
22	Bearing Housing	2	Cast Iron	P6010973	→	22
23	Bolt (Bearing Housing)	8	Steel	P6010009	→	23
24	Washer (Bearing Housing)	8	Steel	P6010025	→	24
25	Screw (Vibration sensor)	6	Steel	P6010067	→	25
25A	Screw (Temperature sensor)	4	Steel	P6010066	→	25A
26	Lip Seal	2	NBR	P6010988	→	26
27	Shoulder Ring	1	Steel	P6010982	→	27
28	Seal Gland	2	Cast Iron	P6010971	→	28
29	Bolt (Seal Gland)	8	Steel	P6010240	→	29
30	Washer (Seal Gland)	8	Steel	P6010239	→	30
31	O-Ring (Seal Gland)	2	FKM	P6010987	→	31
32	O-Ring (Stuffing Box)	4	FKM	P6010983	→	32
33	Stuffing Box	2	Cast Iron	P6010912	→	33
34	Pin (Seal Body)	2	Steel	P6010226	→	34
35	Mechanical Seal*	2				35
36	Shoulder Ring (MS)	1	SS 304	P6010984	→	36
37	Circlip (Snap Ring)	1	Steel	P6010985	→	37
38	Casing Wear Ring	2	Bronze	P6010370	→	38
39	Pin (CWR)	2	Steel	P6010226	→	39
42	Impeller*	1				42
43	Shaft*	1				43
44	Impeller Key	1	Steel	P6010986	→	44
45	Coupling Key	1	Steel	P6010991	→	45
46	Bearing Gland A (Inboard)	1	Cast Iron	P6010911	→	46
47	Plug 1/2" (Lower Casing)	10	Steel	P6010069	→	47
48	Casing*	1				48

*Denotes catalog item with multiple material configurations. Refer to item-specific replacement part table
"→" Denotes identical part number

CAT. NO.	PART DESCRIPTION	QTY.	MATL.	e-HSC 4X6X10	e-HSC 4X6X9.5	CAT. NO.
1	Large Casing Bolt	4	Steel	P6010994	→	1
2	Large Casing Washer	4	Steel	P6010259	→	2
4	Paper Pad (Inlet)	1	Cardboard	P6012546	→	4
5	Paper Pad (Outlet)	1	Cardboard	P6012547	→	5
6	Casing Washer	11	Steel	P6010259	→	6
7	Casing Bolt	11	Steel	P6010995	→	7
8	Tapered Pin Nut	2	Steel	P6010012	→	8
9	Tapered Pin	2	Steel	P6010082	→	9
10	Plug 1/2" (Upper Casing)	1	Steel	P6010069	→	10
11	Jacking Screw	2	Steel	P6010002	→	11
12	Bolts (Bearing Gland)	8	Steel	P6010240	→	12
13	Washer (Bearing Gland)	8	Steel	P6010239	→	13
14	Plug (Bearing Gland)	2	Steel	P6010066	→	14
15A	Bearing Gland Gasket	2	Cardboard	P6010990	→	15A
15	Bearing Gland B (Outboard)	1	Cast Iron	P6010909	→	15
16	Locknut (Bearing)	1	Steel	P6010980	→	16
17	Lockwasher (Bearing)	1	Steel	P6010981	→	17
18	Deep Groove Ball Bearing	2	Steel	P6010989	→	18
19	Jacking Screw (BH)	4	Steel	P6010265	→	19
20	Screw (BH top)	2	Steel	P6010010	→	20
21	Grease Cup	2	Brass	P6010235	→	21
22	Bearing Housing	2	Cast Iron	P6010973	→	22
23	Bolt (Bearing Housing)	8	Steel	P6010009	→	23
24	Washer (Bearing Housing)	8	Steel	P6010025	→	24
25	Screw (Vibration sensor)	6	Steel	P6010067	→	25
25A	Screw (Temperature sensor)	4	Steel	P6010066	→	25A
26	Lip Seal	2	NBR	P6010988	→	26
27	Shoulder Ring	1	Steel	P6010982	→	27
28	Seal Gland	2	Cast Iron	P6010971	→	28
29	Bolt (Seal Gland)	8	Steel	P6010240	→	29
30	Washer (Seal Gland)	8	Steel	P6010239	→	30
31	O-Ring (Seal Gland)	2	FKM	P6010987	→	31
32	O-Ring (Stuffing Box)	4	FKM	P6010983	→	32
33	Stuffing Box	2	Cast Iron	P6010912	→	33
34	Pin (Seal Body)	2	Steel	P6010226	→	34
35	Mechanical Seal*	2				35
36	Shoulder Ring (MS)	1	SS 304	P6010984	→	36
37	Circlip (Snap Ring)	1	Steel	P6010985	→	37
38	Casing Wear Ring	2	Bronze	P6010975	→	38
39	Pin (CWR)	2	Steel	P6010226	→	39
42	Impeller*	1				42
43	Shaft*	1				43
44	Impeller Key	1	Steel	P6010986	→	44
45	Coupling Key	1	Steel	P6010991	→	45
46	Bearing Gland A (Inboard)	1	Cast Iron	P6010911	→	46
47	Plug 1/2" (Lower Casing)	10	Steel	P6010069	→	47
48	Casing*	1				48

*Denotes catalog item with multiple material configurations. Refer to item-specific replacement part table
"→" Denotes identical part number

CAT. NO.	PART DESCRIPTION	QTY.	MATL.	e-HSC 4X6X13	e-HSC 4X6X12	CAT. NO.
1	Large Casing Bolt	4	Steel	P6010257	→	1
2	Large Casing Washer	4	Steel	P6010026	→	2
4	Paper Pad (Inlet)	1	Cardboard	P6010264	→	4
5	Paper Pad (Outlet)	1	Cardboard	P6011005	→	5
6	Casing Washer	8	Steel	P6010026	→	6
7	Casing Bolt	8	Steel	P6010017	→	7
8	Tapered Pin Nut	2	Steel	P6010012	→	8
9	Tapered Pin	2	Steel	P6010030	→	9
10	Plug 1/2" (Upper Casing)	1	Steel	P6010069	→	10
11	Jacking Screw	2	Steel	P6010002	→	11
12	Bolts (Bearing Gland)	8	Steel	P6010240	→	12
13	Washer (Bearing Gland)	8	Steel	P6010239	→	13
14	Plug (Bearing Gland)	2	Steel	P6010066	→	14
15A	Bearing Gland Gasket	2	Cardboard	P6010253	→	15A
15	Bearing Gland B (Outboard)	1	Cast Iron	P6010267	→	15
16	Locknut (Bearing)	1	Steel	P6010237	→	16
17	Lockwasher (Bearing)	1	Steel	P6010238	→	17
18	Deep Groove Ball Bearing	2	Steel	P6010252	→	18
19	Jacking Screw (BH)	4	Steel	P6010265	→	19
20	Screw (BH top)	2	Steel	P6010010	→	20
21	Grease Cup	2	Brass	P6010235	→	21
22	Bearing Housing	2	Cast Iron	P6010367	→	22
23	Bolt (Bearing Housing)	8	Steel	P6010009	→	23
24	Washer (Bearing Housing)	8	Steel	P6010025	→	24
25	Screw (Vibration sensor)	6	Steel	P6010067	→	25
25A	Screw (Temperature sensor)	4	Steel	P6010066	→	25A
26	Lip Seal	2	NBR	P6010251	→	26
27	Shoulder Ring	1	Steel	P6010241	→	27
28	Seal Gland	2	Cast Iron	P6010365	→	28
29	Bolt (Seal Gland)	8	Steel	P6010240	→	29
30	Washer (Seal Gland)	8	Steel	P6010239	→	30
31	O-Ring (Seal Gland)	2	FKM	P6010244	→	31
32	O-Ring (Stuffing Box)	4	FKM	P6010243	→	32
33	Stuffing Box	2	Cast Iron	P6010269	→	33
34	Pin (Seal Body)	2	Steel	P6010226	→	34
35	Mechanical Seal*	2				35
36	Shoulder Ring (MS)	1	SS 304	P6010242	→	36
37	Circlip (Snap Ring)	1	Steel	P6010245	→	37
38	Casing Wear Ring	2	Bronze	P6010370	→	38
39	Pin (CWR)	2	Steel	P6010226	→	39
42	Impeller*	1				42
43	Shaft*	1				43
44	Impeller Key	1	Steel	P6010248	→	44
45	Coupling Key	1	Steel	P6010247	→	45
46	Bearing Gland A (Inboard)	1	Cast Iron	P6010369	→	46
47	Plug 1/2" (Lower Casing)	10	Steel	P6010069	→	47
48	Casing*	1				48

*Denotes catalog item with multiple material configurations. Refer to item-specific replacement part table
"→" Denotes identical part number

CAT. NO.	PART DESCRIPTION	QTY.	MATL.	e-HSC 4X6X16	e-HSC 4X6X15.5	CAT. NO.
1	Large Casing Bolt	4	Steel	P6010257	→	1
2	Large Casing Washer	4	Steel	P6010026	→	2
4	Paper Pad (Inlet)	1	Cardboard	P6013136	→	4
5	Paper Pad (Outlet)	1	Cardboard	P6013137	→	5
6	Casing Washer	13	Steel	P6010026	→	6
7	Casing Bolt	13	Steel	P6010017	→	7
8	Tapered Pin Nut	2	Steel	P6010012	→	8
9	Tapered Pin	2	Steel	P6010030	→	9
10	Plug 1/2" (Upper Casing)	1	Steel	P6010069	→	10
11	Jacking Screw	2	Steel	P6010002	→	11
12	Bolts (Bearing Gland)	8	Steel	P6010240	→	12
13	Washer (Bearing Gland)	8	Steel	P6010239	→	13
14	Plug (Bearing Gland)	2	Steel	P6010066	→	14
15A	Bearing Gland Gasket	2	Cardboard	P6010990	→	15A
15	Bearing Gland B (Outboard)	1	Cast Iron	P6010909	→	15
16	Locknut (Bearing)	1	Steel	P6010980	→	16
17	Lockwasher (Bearing)	1	Steel	P6010981	→	17
18	Deep Groove Ball Bearing	2	Steel	P6010989	→	18
19	Jacking Screw (BH)	4	Steel	P6010265	→	19
20	Screw (BH top)	2	Steel	P6010010	→	20
21	Grease Cup	2	Brass	P6010235	→	21
22	Bearing Housing	2	Cast Iron	P6010973	→	22
23	Bolt (Bearing Housing)	8	Steel	P6010009	→	23
24	Washer (Bearing Housing)	8	Steel	P6010025	→	24
25	Screw (Vibration sensor)	6	Steel	P6010067	→	25
25A	Screw (Temperature sensor)	4	Steel	P6010066	→	25A
26	Lip Seal	2	NBR	P6010988	→	26
27	Shoulder Ring	1	Steel	P6010982	→	27
28	Seal Gland	2	Cast Iron	P6010971	→	28
29	Bolt (Seal Gland)	8	Steel	P6010240	→	29
30	Washer (Seal Gland)	8	Steel	P6010239	→	30
31	O-Ring (Seal Gland)	2	FKM	P6010987	→	31
32	O-Ring (Stuffing Box)	4	FKM	P6010983	→	32
33	Stuffing Box	2	Cast Iron	P6010912	→	33
34	Pin (Seal Body)	2	Steel	P6010226	→	34
35	Mechanical Seal*	2				35
36	Shoulder Ring (MS)	1	SS 304	P6010984	→	36
37	Circlip (Snap Ring)	1	Steel	P6010985	→	37
38	Casing Wear Ring	2	Bronze	P6010975	→	38
39	Pin (CWR)	2	Steel	P6010226	→	39
42	Impeller*	1				42
43	Shaft*	1				43
44	Impeller Key	1	Steel	P6010986	→	44
45	Coupling Key	1	Steel	P6010991	→	45
46	Bearing Gland A (Inboard)	1	Cast Iron	P6010911	→	46
47	Plug 1/2" (Lower Casing)	10	Steel	P6010069	→	47
48	Casing*	1				48

*Denotes catalog item with multiple material configurations. Refer to item-specific replacement part table
"→" Denotes identical part number

CAT. NO.	PART DESCRIPTION	QTY.	MATL.	e-HSC 5X6X9	e-HSC 5X6X8.5	CAT. NO.
1	Large Casing Bolt	4	Steel	P6010994	→	1
2	Large Casing Washer	4	Steel	P6010259	→	2
4	Paper Pad (Inlet)	1	Cardboard	P6010996	→	4
5	Paper Pad (Outlet)	1	Cardboard	P6010997	→	5
6	Casing Washer	11	Steel	P6010259	→	6
7	Casing Bolt	11	Steel	P6010995	→	7
8	Tapered Pin Nut	2	Steel	P6010012	→	8
9	Tapered Pin	2	Steel	P6010082	→	9
10	Plug 1/2" (Upper Casing)	1	Steel	P6010069	→	10
11	Jacking Screw	2	Steel	P6010002	→	11
12	Bolts (Bearing Gland)	8	Steel	P6010240	→	12
13	Washer (Bearing Gland)	8	Steel	P6010239	→	13
14	Plug (Bearing Gland)	2	Steel	P6010066	→	14
15A	Bearing Gland Gasket	2	Cardboard	P6010990	→	15A
15	Bearing Gland B (Outboard)	1	Cast Iron	P6010909	→	15
16	Locknut (Bearing)	1	Steel	P6010980	→	16
17	Lockwasher (Bearing)	1	Steel	P6010981	→	17
18	Deep Groove Ball Bearing	2	Steel	P6010989	→	18
19	Jacking Screw (BH)	4	Steel	P6010265	→	19
20	Screw (BH top)	2	Steel	P6010010	→	20
21	Grease Cup	2	Brass	P6010235	→	21
22	Bearing Housing	2	Cast Iron	P6010973	→	22
23	Bolt (Bearing Housing)	8	Steel	P6010009	→	23
24	Washer (Bearing Housing)	8	Steel	P6010025	→	24
25	Screw (Vibration sensor)	6	Steel	P6010067	→	25
25A	Screw (Temperature sensor)	4	Steel	P6010066	→	25A
26	Lip Seal	2	NBR	P6010988	→	26
27	Shoulder Ring	1	Steel	P6010982	→	27
28	Seal Gland	2	Cast Iron	P6010971	→	28
29	Bolt (Seal Gland)	8	Steel	P6010240	→	29
30	Washer (Seal Gland)	8	Steel	P6010239	→	30
31	O-Ring (Seal Gland)	2	FKM	P6010987	→	31
32	O-Ring (Stuffing Box)	4	FKM	P6010983	→	32
33	Stuffing Box	2	Cast Iron	P6010912	→	33
34	Pin (Seal Body)	2	Steel	P6010226	→	34
35	Mechanical Seal*	2				35
36	Shoulder Ring (MS)	1	SS 304	P6010984	→	36
37	Circlip (Snap Ring)	1	Steel	P6010985	→	37
38	Casing Wear Ring	2	Bronze	P6010975	→	38
39	Pin (CWR)	2	Steel	P6010226	→	39
42	Impeller*	1				42
43	Shaft*	1				43
44	Impeller Key	1	Steel	P6010986	→	44
45	Coupling Key	1	Steel	P6010991	→	45
46	Bearing Gland A (Inboard)	1	Cast Iron	P6010911	→	46
47	Plug 1/2" (Lower Casing)	10	Steel	P6010069	→	47
48	Casing*	1				48

*Denotes catalog item with multiple material configurations. Refer to item-specific replacement part table
"→" Denotes identical part number

CAT. NO.	PART DESCRIPTION	QTY.	MATL.	e-HSC 5X8X9.5	e-HSC 5X8X9	CAT. NO.
1	Large Casing Bolt	4	Steel	P6010994	→	1
2	Large Casing Washer	4	Steel	P6010259	→	2
4	Paper Pad (Inlet)	1	Cardboard	P6010261	→	4
5	Paper Pad (Outlet)	1	Cardboard	P6011006	→	5
6	Casing Washer	13	Steel	P6010259	→	6
7	Casing Bolt	13	Steel	P6010995	→	7
8	Tapered Pin Nut	2	Steel	P6010012	→	8
9	Tapered Pin	2	Steel	P6010082	→	9
10	Plug 1/2" (Upper Casing)	1	Steel	P6010069	→	10
11	Jacking Screw	2	Steel	P6010002	→	11
12	Bolts (Bearing Gland)	8	Steel	P6010240	→	12
13	Washer (Bearing Gland)	8	Steel	P6010239	→	13
14	Plug (Bearing Gland)	2	Steel	P6010066	→	14
15A	Bearing Gland Gasket	2	Cardboard	P6010253	→	15A
15	Bearing Gland B (Outboard)	1	Cast Iron	P6010267	→	15
16	Locknut (Bearing)	1	Steel	P6010237	→	16
17	Lockwasher (Bearing)	1	Steel	P6010238	→	17
18	Deep Groove Ball Bearing	2	Steel	P6010252	→	18
19	Jacking Screw (BH)	4	Steel	P6010265	→	19
20	Screw (BH top)	2	Steel	P6010010	→	20
21	Grease Cup	2	Brass	P6010235	→	21
22	Bearing Housing	2	Cast Iron	P6010367	→	22
23	Bolt (Bearing Housing)	8	Steel	P6010009	→	23
24	Washer (Bearing Housing)	8	Steel	P6010025	→	24
25	Screw (Vibration sensor)	6	Steel	P6010067	→	25
25A	Screw (Temperature sensor)	4	Steel	P6010066	→	25A
26	Lip Seal	2	NBR	P6010251	→	26
27	Shoulder Ring	1	Steel	P6010241	→	27
28	Seal Gland	2	Cast Iron	P6010365	→	28
29	Bolt (Seal Gland)	8	Steel	P6010240	→	29
30	Washer (Seal Gland)	8	Steel	P6010239	→	30
31	O-Ring (Seal Gland)	2	FKM	P6010244	→	31
32	O-Ring (Stuffing Box)	4	FKM	P6010243	→	32
33	Stuffing Box	2	Cast Iron	P6010268	→	33
34	Pin (Seal Body)	2	Steel	P6010226	→	34
35	Mechanical Seal*	2				35
36	Shoulder Ring (MS)	1	SS 304	P6010242	→	36
37	Circlip (Snap Ring)	1	Steel	P6010245	→	37
38	Casing Wear Ring	2	Bronze	P6010371	→	38
39	Pin (CWR)	2	Steel	P6010226	→	39
42	Impeller*	1				42
43	Shaft*	1				43
44	Impeller Key	1	Steel	P6010248	→	44
45	Coupling Key	1	Steel	P6010247	→	45
46	Bearing Gland A (Inboard)	1	Cast Iron	P6010369	→	46
47	Plug 1/2" (Lower Casing)	10	Steel	P6010069	→	47
48	Casing*	1				48

*Denotes catalog item with multiple material configurations. Refer to item-specific replacement part table
"→" Denotes identical part number

CAT. NO.	PART DESCRIPTION	QTY.	MATL.	e-HSC 5X8X12	e-HSC 5X8X11	CAT. NO.
1	Large Casing Bolt	4	Steel	P6010257	→	1
2	Large Casing Washer	4	Steel	P6010026	→	2
4	Paper Pad (Inlet)	1	Cardboard	P6013138	→	4
5	Paper Pad (Outlet)	1	Cardboard	P6013139	→	5
6	Casing Washer	11	Steel	P6010026	→	6
7	Casing Bolt	11	Steel	P6010017	→	7
8	Tapered Pin Nut	2	Steel	P6010012	→	8
9	Tapered Pin	2	Steel	P6010030	→	9
10	Plug 1/2" (Upper Casing)	1	Steel	P6010069	→	10
11	Jacking Screw	2	Steel	P6010002	→	11
12	Bolts (Bearing Gland)	8	Steel	P6010240	→	12
13	Washer (Bearing Gland)	8	Steel	P6010239	→	13
14	Plug (Bearing Gland)	2	Steel	P6010066	→	14
15A	Bearing Gland Gasket	2	Cardboard	P6010253	→	15A
15	Bearing Gland B (Outboard)	1	Cast Iron	P6010267	→	15
16	Locknut (Bearing)	1	Steel	P6010237	→	16
17	Lockwasher (Bearing)	1	Steel	P6010238	→	17
18	Deep Groove Ball Bearing	2	Steel	P6010252	→	18
19	Jacking Screw (BH)	4	Steel	P6010265	→	19
20	Screw (BH top)	2	Steel	P6010010	→	20
21	Grease Cup	2	Brass	P6010235	→	21
22	Bearing Housing	2	Cast Iron	P6010367	→	22
23	Bolt (Bearing Housing)	8	Steel	P6010009	→	23
24	Washer (Bearing Housing)	8	Steel	P6010025	→	24
25	Screw (Vibration sensor)	6	Steel	P6010067	→	25
25A	Screw (Temperature sensor)	4	Steel	P6010066	→	25A
26	Lip Seal	2	NBR	P6010251	→	26
27	Shoulder Ring	1	Steel	P6010241	→	27
28	Seal Gland	2	Cast Iron	P6010365	→	28
29	Bolt (Seal Gland)	8	Steel	P6010240	→	29
30	Washer (Seal Gland)	8	Steel	P6010239	→	30
31	O-Ring (Seal Gland)	2	FKM	P6010244	→	31
32	O-Ring (Stuffing Box)	4	FKM	P6010243	→	32
33	Stuffing Box	2	Cast Iron	P6010268	→	33
34	Pin (Seal Body)	2	Steel	P6010226	→	34
35	Mechanical Seal*	2				35
36	Shoulder Ring (MS)	1	SS 304	P6010242	→	36
37	Circlip (Snap Ring)	1	Steel	P6010245	→	37
38	Casing Wear Ring	2	Bronze	P6010371	→	38
39	Pin (CWR)	2	Steel	P6010226	→	39
42	Impeller*	1				42
43	Shaft*	1				43
44	Impeller Key	1	Steel	P6010248	→	44
45	Coupling Key	1	Steel	P6010247	→	45
46	Bearing Gland A (Inboard)	1	Cast Iron	P6010369	→	46
47	Plug 1/2" (Lower Casing)	10	Steel	P6010069	→	47
48	Casing*	1				48

*Denotes catalog item with multiple material configurations. Refer to item-specific replacement part table
"→" Denotes identical part number

CAT. NO.	PART DESCRIPTION	QTY.	MATL.	e-HSC 5X8X15.5	e-HSC 5X8X14.5	CAT. NO.
1	Large Casing Bolt	4	Steel	P6010257	→	1
2	Large Casing Washer	4	Steel	P6010026	→	2
4	Paper Pad (Inlet)	1	Cardboard	P6012592	→	4
5	Paper Pad (Outlet)	1	Cardboard	P6012593	→	5
6	Casing Washer	14	Steel	P6010026	→	6
7	Casing Bolt	14	Steel	P6010017	→	7
8	Tapered Pin Nut	2	Steel	P6010012	→	8
9	Tapered Pin	2	Steel	P6010030	→	9
10	Plug 1/2" (Upper Casing)	1	Steel	P6010069	→	10
11	Jacking Screw	2	Steel	P6010002	→	11
12	Bolts (Bearing Gland)	8	Steel	P6010240	→	12
13	Washer (Bearing Gland)	8	Steel	P6010239	→	13
14	Plug (Bearing Gland)	2	Steel	P6010066	→	14
15A	Bearing Gland Gasket	2	Cardboard	P6010253	→	15A
15	Bearing Gland B (Outboard)	1	Cast Iron	P6010267	→	15
16	Locknut (Bearing)	1	Steel	P6010237	→	16
17	Lockwasher (Bearing)	1	Steel	P6010238	→	17
18	Deep Groove Ball Bearing	2	Steel	P6010252	→	18
19	Jacking Screw (BH)	4	Steel	P6010265	→	19
20	Screw (BH top)	2	Steel	P6010010	→	20
21	Grease Cup	2	Brass	P6010235	→	21
22	Bearing Housing	2	Cast Iron	P6010367	→	22
23	Bolt (Bearing Housing)	8	Steel	P6010009	→	23
24	Washer (Bearing Housing)	8	Steel	P6010025	→	24
25	Screw (Vibration sensor)	6	Steel	P6010067	→	25
25A	Screw (Temperature sensor)	4	Steel	P6010066	→	25A
26	Lip Seal	2	NBR	P6010251	→	26
27	Shoulder Ring	1	Steel	P6010241	→	27
28	Seal Gland	2	Cast Iron	P6010365	→	28
29	Bolt (Seal Gland)	8	Steel	P6010240	→	29
30	Washer (Seal Gland)	8	Steel	P6010239	→	30
31	O-Ring (Seal Gland)	2	FKM	P6010244	→	31
32	O-Ring (Stuffing Box)	4	FKM	P6010243	→	32
33	Stuffing Box	2	Cast Iron	P6010268	→	33
34	Pin (Seal Body)	2	Steel	P6010226	→	34
35	Mechanical Seal*	2				35
36	Shoulder Ring (MS)	1	SS 304	P6010242	→	36
37	Circlip (Snap Ring)	1	Steel	P6010245	→	37
38	Casing Wear Ring	2	Bronze	P6010371	→	38
39	Pin (CWR)	2	Steel	P6010226	→	39
42	Impeller*	1				42
43	Shaft*	1				43
44	Impeller Key	1	Steel	P6010248	→	44
45	Coupling Key	1	Steel	P6010247	→	45
46	Bearing Gland A (Inboard)	1	Cast Iron	P6010369	→	46
47	Plug 1/2" (Lower Casing)	10	Steel	P6010069	→	47
48	Casing*	1				48

*Denotes catalog item with multiple material configurations. Refer to item-specific replacement part table
"→" Denotes identical part number

CAT. NO.	PART DESCRIPTION	QTY.	MATL.	e-HSC 5X8X19	e-HSC 5X8X18	CAT. NO.
1	Large Casing Bolt	4	Steel	P6010257	→	1
2	Large Casing Washer	4	Steel	P6010026	→	2
4	Paper Pad (Inlet)	1	Cardboard	P6010262	→	4
5	Paper Pad (Outlet)	1	Cardboard	P6011007	→	5
6	Casing Washer	16	Steel	P6010026	→	6
7	Casing Bolt	16	Steel	P6010017	→	7
8	Tapered Pin Nut	2	Steel	P6010012	→	8
9	Tapered Pin	2	Steel	P6010030	→	9
10	Plug 1/2" (Upper Casing)	1	Steel	P6010069	→	10
11	Jacking Screw	2	Steel	P6010002	→	11
12	Bolts (Bearing Gland)	8	Steel	P6010240	→	12
13	Washer (Bearing Gland)	8	Steel	P6010239	→	13
14	Plug (Bearing Gland)	2	Steel	P6010066	→	14
15A	Bearing Gland Gasket	2	Cardboard	P6010253	→	15A
15	Bearing Gland B (Outboard)	1	Cast Iron	P6010267	→	15
16	Locknut (Bearing)	1	Steel	P6010237	→	16
17	Lockwasher (Bearing)	1	Steel	P6010238	→	17
18	Deep Groove Ball Bearing	2	Steel	P6010252	→	18
19	Jacking Screw (BH)	4	Steel	P6010265	→	19
20	Screw (BH top)	2	Steel	P6010010	→	20
21	Grease Cup	2	Brass	P6010235	→	21
22	Bearing Housing	2	Cast Iron	P6010367	→	22
23	Bolt (Bearing Housing)	8	Steel	P6010009	→	23
24	Washer (Bearing Housing)	8	Steel	P6010025	→	24
25	Screw (Vibration sensor)	6	Steel	P6010067	→	25
25A	Screw (Temperature sensor)	4	Steel	P6010066	→	25A
26	Lip Seal	2	NBR	P6010251	→	26
27	Shoulder Ring	1	Steel	P6010241	→	27
28	Seal Gland	2	Cast Iron	P6010365	→	28
29	Bolt (Seal Gland)	8	Steel	P6010240	→	29
30	Washer (Seal Gland)	8	Steel	P6010239	→	30
31	O-Ring (Seal Gland)	2	FKM	P6010244	→	31
32	O-Ring (Stuffing Box)	4	FKM	P6010243	→	32
33	Stuffing Box	2	Cast Iron	P6010268	→	33
34	Pin (Seal Body)	2	Steel	P6010226	→	34
35	Mechanical Seal*	2				35
36	Shoulder Ring (MS)	1	SS 304	P6010242	→	36
37	Circlip (Snap Ring)	1	Steel	P6010245	→	37
38	Casing Wear Ring	2	Bronze	P6010371	→	38
39	Pin (CWR)	2	Steel	P6010226	→	39
42	Impeller*	1				42
43	Shaft*	1				43
44	Impeller Key	1	Steel	P6010248	→	44
45	Coupling Key	1	Steel	P6010247	→	45
46	Bearing Gland A (Inboard)	1	Cast Iron	P6010369	→	46
47	Plug 1/2" (Lower Casing)	10	Steel	P6010069	→	47
48	Casing*	1				48

*Denotes catalog item with multiple material configurations. Refer to item-specific replacement part table
"→" Denotes identical part number

CAT. NO.	PART DESCRIPTION	QTY.	MATL.	e-HSC 6X8X6.5	e-HSC 6X8X6	CAT. NO.
1	Large Casing Bolt	4	Steel	P6010994	→	1
2	Large Casing Washer	4	Steel	P6010259	→	2
4	Paper Pad (Inlet)	1	Cardboard	P6013348	→	4
5	Paper Pad (Outlet)	1	Cardboard	P6013349	→	5
6	Casing Washer	12	Steel	P6010259	→	6
7	Casing Bolt	12	Steel	P6010995	→	7
8	Tapered Pin Nut	2	Steel	P6010012	→	8
9	Tapered Pin	2	Steel	P6010082	→	9
10	Plug 1/2" (Upper Casing)	1	Steel	P6010069	→	10
11	Jacking Screw	2	Steel	P6010002	→	11
12	Bolts (Bearing Gland)	8	Steel	P6010240	→	12
13	Washer (Bearing Gland)	8	Steel	P6010239	→	13
14	Plug (Bearing Gland)	2	Steel	P6010066	→	14
15A	Bearing Gland Gasket	2	Cardboard	P6010990	→	15A
15	Bearing Gland B (Outboard)	1	Cast Iron	P6010909	→	15
16	Locknut (Bearing)	1	Steel	P6010980	→	16
17	Lockwasher (Bearing)	1	Steel	P6010981	→	17
18	Deep Groove Ball Bearing	2	Steel	P6010989	→	18
19	Jacking Screw (BH)	4	Steel	P6010265	→	19
20	Screw (BH top)	2	Steel	P6010010	→	20
21	Grease Cup	2	Brass	P6010235	→	21
22	Bearing Housing	2	Cast Iron	P6010973	→	22
23	Bolt (Bearing Housing)	8	Steel	P6010009	→	23
24	Washer (Bearing Housing)	8	Steel	P6010025	→	24
25	Screw (Vibration sensor)	6	Steel	P6010067	→	25
25A	Screw (Temperature sensor)	4	Steel	P6010066	→	25A
26	Lip Seal	2	NBR	P6010988	→	26
27	Shoulder Ring	1	Steel	P6010982	→	27
28	Seal Gland	2	Cast Iron	P6010971	→	28
29	Bolt (Seal Gland)	8	Steel	P6010240	→	29
30	Washer (Seal Gland)	8	Steel	P6010239	→	30
31	O-Ring (Seal Gland)	2	FKM	P6010987	→	31
32	O-Ring (Stuffing Box)	4	FKM	P6010983	→	32
33	Stuffing Box	2	Cast Iron	P6010912	→	33
34	Pin (Seal Body)	2	Steel	P6010226	→	34
35	Mechanical Seal*	2				35
36	Shoulder Ring (MS)	1	SS 304	P6010984	→	36
37	Circlip (Snap Ring)	1	Steel	P6010985	→	37
38	Casing Wear Ring	2	Bronze	P6010370	→	38
39	Pin (CWR)	2	Steel	P6010226	→	39
42	Impeller*	1				42
43	Shaft*	1				43
44	Impeller Key	1	Steel	P6010986	→	44
45	Coupling Key	1	Steel	P6010991	→	45
46	Bearing Gland A (Inboard)	1	Cast Iron	P6010911	→	46
47	Plug 1/2" (Lower Casing)	10	Steel	P6010069	→	47
48	Casing*	1				48

*Denotes catalog item with multiple material configurations. Refer to item-specific replacement part table
"→" Denotes identical part number

CAT. NO.	PART DESCRIPTION	QTY.	MATL.	e-HSC 6X8X12	e-HSC 6X8X11	CAT. NO.
1	Large Casing Bolt	4	Steel	P6010257	→	1
2	Large Casing Washer	4	Steel	P6010026	→	2
4	Paper Pad (Inlet)	1	Cardboard	P6013142	→	4
5	Paper Pad (Outlet)	1	Cardboard	P6013143	→	5
6	Casing Washer	15	Steel	P6010026	→	6
7	Casing Bolt	15	Steel	P6010017	→	7
8	Tapered Pin Nut	2	Steel	P6010012	→	8
9	Tapered Pin	2	Steel	P6010030	→	9
10	Plug 1/2" (Upper Casing)	1	Steel	P6010069	→	10
11	Jacking Screw	2	Steel	P6010002	→	11
12	Bolts (Bearing Gland)	8	Steel	P6010240	→	12
13	Washer (Bearing Gland)	8	Steel	P6010239	→	13
14	Plug (Bearing Gland)	2	Steel	P6010066	→	14
15A	Bearing Gland Gasket	2	Cardboard	P6010253	→	15A
15	Bearing Gland B (Outboard)	1	Cast Iron	P6010267	→	15
16	Locknut (Bearing)	1	Steel	P6010237	→	16
17	Lockwasher (Bearing)	1	Steel	P6010238	→	17
18	Deep Groove Ball Bearing	2	Steel	P6010252	→	18
19	Jacking Screw (BH)	4	Steel	P6010236	→	19
20	Screw (BH top)	2	Steel	P6010010	→	20
21	Grease Cup	2	Brass	P6010235	→	21
22	Bearing Housing	2	Cast Iron	P6010367	→	22
23	Bolt (Bearing Housing)	8	Steel	P6010009	→	23
24	Washer (Bearing Housing)	8	Steel	P6010025	→	24
25	Screw (Vibration sensor)	6	Steel	P6010067	→	25
25A	Screw (Temperature sensor)	4	Steel	P6010066	→	25A
26	Lip Seal	2	NBR	P6010251	→	26
27	Shoulder Ring	1	Steel	P6010241	→	27
28	Seal Gland	2	Cast Iron	P6010365	→	28
29	Bolt (Seal Gland)	8	Steel	P6010240	→	29
30	Washer (Seal Gland)	8	Steel	P6010239	→	30
31	O-Ring (Seal Gland)	2	FKM	P6010244	→	31
32	O-Ring (Stuffing Box)	4	FKM	P6010243	→	32
33	Stuffing Box	2	Cast Iron	P6010268	→	33
34	Pin (Seal Body)	2	Steel	P6010226	→	34
35	Mechanical Seal*	2				35
36	Shoulder Ring (MS)	1	SS 304	P6010242	→	36
37	Circlip (Snap Ring)	1	Steel	P6010245	→	37
38	Casing Wear Ring	2	Bronze	P6010372	→	38
39	Pin (CWR)	2	Steel	P6010226	→	39
42	Impeller*	1				42
43	Shaft*	1				43
44	Impeller Key	1	Steel	P6010250	→	44
45	Coupling Key	1	Steel	P6010247	→	45
46	Bearing Gland A (Inboard)	1	Cast Iron	P6010369	→	46
47	Plug 1/2" (Lower Casing)	10	Steel	P6010069	→	47
48	Casing*	1				48

*Denotes catalog item with multiple material configurations. Refer to item-specific replacement part table
"→" Denotes identical part number

CAT. NO.	PART DESCRIPTION	QTY.	MATL.	e-HSC 6X8X14	e-HSC 6X8X13.5	CAT. NO.
1	Large Casing Bolt	4	Steel	P6010257	→	1
2	Large Casing Washer	4	Steel	P6010026	→	2
4	Paper Pad (Inlet)	1	Cardboard	P6010263	→	4
5	Paper Pad (Outlet)	1	Cardboard	P6011008	→	5
6	Casing Washer	17	Steel	P6010026	→	6
7	Casing Bolt	17	Steel	P6010017	→	7
8	Tapered Pin Nut	2	Steel	P6010012	→	8
9	Tapered Pin	2	Steel	P6010030	→	9
10	Plug 1/2" (Upper Casing)	1	Steel	P6010069	→	10
11	Jacking Screw	2	Steel	P6010002	→	11
12	Bolts (Bearing Gland)	8	Steel	P6010240	→	12
13	Washer (Bearing Gland)	8	Steel	P6010239	→	13
14	Plug (Bearing Gland)	2	Steel	P6010066	→	14
15A	Bearing Gland Gasket	2	Cardboard	P6010253	→	15A
15	Bearing Gland B (Outboard)	1	Cast Iron	P6010267	→	15
16	Locknut (Bearing)	1	Steel	P6010237	→	16
17	Lockwasher (Bearing)	1	Steel	P6010238	→	17
18	Deep Groove Ball Bearing	2	Steel	P6010252	→	18
19	Jacking Screw (BH)	4	Steel	P6010236	→	19
20	Screw (BH top)	2	Steel	P6010010	→	20
21	Grease Cup	2	Brass	P6010235	→	21
22	Bearing Housing	2	Cast Iron	P6010367	→	22
23	Bolt (Bearing Housing)	8	Steel	P6010009	→	23
24	Washer (Bearing Housing)	8	Steel	P6010025	→	24
25	Screw (Vibration sensor)	6	Steel	P6010067	→	25
25A	Screw (Temperature sensor)	4	Steel	P6010066	→	25A
26	Lip Seal	2	NBR	P6010251	→	26
27	Shoulder Ring	1	Steel	P6010241	→	27
28	Seal Gland	2	Cast Iron	P6010365	→	28
29	Bolt (Seal Gland)	8	Steel	P6010240	→	29
30	Washer (Seal Gland)	8	Steel	P6010239	→	30
31	O-Ring (Seal Gland)	2	FKM	P6010244	→	31
32	O-Ring (Stuffing Box)	4	FKM	P6010243	→	32
33	Stuffing Box	2	Cast Iron	P6010268	→	33
34	Pin (Seal Body)	2	Steel	P6010226	→	34
35	Mechanical Seal*	2				35
36	Shoulder Ring (MS)	1	SS 304	P6010242	→	36
37	Circlip (Snap Ring)	1	Steel	P6010245	→	37
38	Casing Wear Ring	2	Bronze	P6010372	→	38
39	Pin (CWR)	2	Steel	P6010226	→	39
42	Impeller*	1				42
43	Shaft*	1				43
44	Impeller Key	1	Steel	P6010250	→	44
45	Coupling Key	1	Steel	P6010247	→	45
46	Bearing Gland A (Inboard)	1	Cast Iron	P6010369	→	46
47	Plug 1/2" (Lower Casing)	10	Steel	P6010069	→	47
48	Casing*	1				48

*Denotes catalog item with multiple material configurations. Refer to item-specific replacement part table
"→" Denotes identical part number

CAT. NO.	PART DESCRIPTION	QTY.	MATL.	e-HSC 6X8X18	e-HSC 6X8X17	CAT. NO.
1	Large Casing Bolt	4	Steel	P6010257	→	1
2	Large Casing Washer	4	Steel	P6010026	→	2
4	Paper Pad (Inlet)	1	Cardboard	P6012642	→	4
5	Paper Pad (Outlet)	1	Cardboard	P6012643	→	5
6	Casing Washer	15	Steel	P6010026	→	6
7	Casing Bolt	15	Steel	P6010017	→	7
8	Tapered Pin Nut	2	Steel	P6010012	→	8
9	Tapered Pin	2	Steel	P6010030	→	9
10	Plug 1/2" (Upper Casing)	1	Steel	P6010069	→	10
11	Jacking Screw	2	Steel	P6010002	→	11
12	Bolts (Bearing Gland)	8	Steel	P6010007	→	12
13	Washer (Bearing Gland)	8	Steel	P6010025	→	13
14	Plug (Bearing Gland)	2	Steel	P6010071	→	14
15A	Bearing Gland Gasket	2	Cardboard	P6010103	→	15A
15	Bearing Gland B (Outboard)	1	Cast Iron	P6010087	→	15
16	Locknut (Bearing)	1	Steel	P6010040	→	16
17	Lockwasher (Bearing)	1	Steel	P6010033	→	17
18	Deep Groove Ball Bearing	2	Steel	P6010102	→	18
19	Jacking Screw (BH)	4	Steel	P6010001	→	19
20	Screw (BH top)	2	Steel	P6010010	→	20
21	Grease Cup	2	Brass	P6010235	→	21
22	Bearing Housing	2	Cast Iron	P6010101	→	22
23	Bolt (Bearing Housing)	8	Steel	P6010008	→	23
24	Washer (Bearing Housing)	8	Steel	P6010027	→	24
25	Screw (Vibration sensor)	6	Steel	P6010067	→	25
25A	Screw (Temperature sensor)	4	Steel	P6010066	→	25A
26	Lip Seal	2	NBR	P6010061	→	26
27	Shoulder Ring	1	Steel	P6010043	→	27
28	Seal Gland	2	Cast Iron	P6010099	→	28
29	Bolt (Seal Gland)	8	Steel	P6010007	→	29
30	Washer (Seal Gland)	8	Steel	P6010025	→	30
31	O-Ring (Seal Gland)	2	FKM	P6010056	→	31
32	O-Ring (Stuffing Box)	4	FKM	P6010220	→	32
33	Stuffing Box	2	Cast Iron	P6010088	→	33
34	Pin (Seal Body)	2	Steel	P6010036	→	34
35	Mechanical Seal*	2				35
36	Shoulder Ring (MS)	1	SS 304	P6010047	→	36
37	Circlip (Snap Ring)	1	Steel	P6010037	→	37
38	Casing Wear Ring	2	Bronze	P6012638	→	38
39	Pin (CWR)	2	Steel	P6010226	→	39
42	Impeller*	1				42
43	Shaft*	1				43
44	Impeller Key	1	Steel	P6010074	→	44
45	Coupling Key	1	Steel	P6010075	→	45
46	Bearing Gland A (Inboard)	1	Cast Iron	P6010105	→	46
47	Plug 1/2" (Lower Casing)	10	Steel	P6010069	→	47
48	Casing*	1				48

*Denotes catalog item with multiple material configurations. Refer to item-specific replacement part table
"→" Denotes identical part number

CAT. NO.	PART DESCRIPTION	QTY.	MATL.	e-HSC 6X8X22	e-HSC 6X8X21	CAT. NO.
1	Large Casing Bolt	4	Steel	P6010020	→	1
2	Large Casing Washer	4	Steel	P6010026	→	2
4	Paper Pad (Inlet)	1	Cardboard	P6012686	→	4
5	Paper Pad (Outlet)	1	Cardboard	P6012687	→	5
6	Casing Washer	18	Steel	P6010026	→	6
7	Casing Bolt	18	Steel	P6010019	→	7
8	Tapered Pin Nut	2	Steel	P6010013	→	8
9	Tapered Pin	2	Steel	P6010222	→	9
10	Plug 1/2" (Upper Casing)	1	Steel	P6010069	→	10
11	Jacking Screw	2	Steel	P6010003	→	11
12	Bolts (Bearing Gland)	8	Steel	P6010007	→	12
13	Washer (Bearing Gland)	8	Steel	P6010025	→	13
14	Plug (Bearing Gland)	2	Steel	P6010071	→	14
15A	Bearing Gland Gasket	2	Cardboard	P6010146	→	15A
15	Bearing Gland B (Outboard)	1	Cast Iron	P6010130	→	15
16	Locknut (Bearing)	1	Steel	P6010041	→	16
17	Lockwasher (Bearing)	1	Steel	P6010034	→	17
18	Deep Groove Ball Bearing	2	Steel	P6010145	→	18
19	Jacking Screw (BH)	4	Steel	P6010001	→	19
20	Screw (BH top)	2	Steel	P6010010	→	20
21	Grease Cup	2	Brass	P6010235	→	21
22	Bearing Housing	2	Cast Iron	P6010144	→	22
23	Bolt (Bearing Housing)	8	Steel	P6010008	→	23
24	Washer (Bearing Housing)	8	Steel	P6010027	→	24
25	Screw (Vibration sensor)	6	Steel	P6010067	→	25
25A	Screw (Temperature sensor)	4	Steel	P6010066	→	25A
26	Lip Seal	2	NBR	P6010062	→	26
27	Shoulder Ring	1	Steel	P6010045	→	27
28	Seal Gland	2	Cast Iron	P6010142	→	28
29	Bolt (Seal Gland)	8	Steel	P6010007	→	29
30	Washer (Seal Gland)	8	Steel	P6010025	→	30
31	O-Ring (Seal Gland)	2	FKM	P6010058	→	31
32	O-Ring (Stuffing Box)	4	FKM	P6010057	→	32
33	Stuffing Box	2	Cast Iron	P6010131	→	33
34	Pin (Seal Body)	2	Steel	P6010226	→	34
35	Mechanical Seal*	2				35
36	Shoulder Ring (MS)	1	SS 304	P6010046	→	36
37	Circlip (Snap Ring)	1	Steel	P6010038	→	37
38	Casing Wear Ring	2	Bronze	P6010374	→	38
39	Pin (CWR)	2	Steel	P6010226	→	39
42	Impeller*	1				42
43	Shaft*	1				43
44	Impeller Key	1	Steel	P6010905	→	44
45	Coupling Key	1	Steel	P6010074	→	45
46	Bearing Gland A (Inboard)	1	Cast Iron	P6010148	→	46
47	Plug 1/2" (Lower Casing)	10	Steel	P6010069	→	47
48	Casing*	1				48

*Denotes catalog item with multiple material configurations. Refer to item-specific replacement part table
"→" Denotes identical part number

CAT. NO.	PART DESCRIPTION	QTY.	MATL.	e-HSC 6X10X11	e-HSC 6X10X10.5	CAT. NO.
1	Large Casing Bolt	4	Steel	P6010257	→	1
2	Large Casing Washer	4	Steel	P6010026	→	2
4	Paper Pad (Inlet)	1	Cardboard	P6013140	→	4
5	Paper Pad (Outlet)	1	Cardboard	P6013141	→	5
6	Casing Washer	13	Steel	P6010026	→	6
7	Casing Bolt	13	Steel	P6010017	→	7
8	Tapered Pin Nut	2	Steel	P6010012	→	8
9	Tapered Pin	2	Steel	P6010030	→	9
10	Plug 1/2" (Upper Casing)	1	Steel	P6010069	→	10
11	Jacking Screw	2	Steel	P6010002	→	11
12	Bolts (Bearing Gland)	8	Steel	P6010007	→	12
13	Washer (Bearing Gland)	8	Steel	P6010025	→	13
14	Plug (Bearing Gland)	2	Steel	P6010071	→	14
15A	Bearing Gland Gasket	2	Cardboard	P6010103	→	15A
15	Bearing Gland B (Outboard)	1	Cast Iron	P6010087	→	15
16	Locknut (Bearing)	1	Steel	P6010040	→	16
17	Lockwasher (Bearing)	1	Steel	P6010033	→	17
18	Deep Groove Ball Bearing	2	Steel	P6010102	→	18
19	Jacking Screw (BH)	4	Steel	P6010001	→	19
20	Screw (BH top)	2	Steel	P6010010	→	20
21	Grease Cup	2	Brass	P6010235	→	21
22	Bearing Housing	2	Cast Iron	P6010101	→	22
23	Bolt (Bearing Housing)	8	Steel	P6010008	→	23
24	Washer (Bearing Housing)	8	Steel	P6010027	→	24
25	Screw (Vibration sensor)	6	Steel	P6010067	→	25
25A	Screw (Temperature sensor)	4	Steel	P6010066	→	25A
26	Lip Seal	2	NBR	P6010061	→	26
27	Shoulder Ring	1	Steel	P6010043	→	27
28	Seal Gland	2	Cast Iron	P6010099	→	28
29	Bolt (Seal Gland)	8	Steel	P6010007	→	29
30	Washer (Seal Gland)	8	Steel	P6010025	→	30
31	O-Ring (Seal Gland)	2	FKM	P6010056	→	31
32	O-Ring (Stuffing Box)	4	FKM	P6010220	→	32
33	Stuffing Box	2	Cast Iron	P6010907	→	33
34	Pin (Seal Body)	2	Steel	P6010036	→	34
35	Mechanical Seal*	2				35
36	Shoulder Ring (MS)	1	SS 304	P6010047	→	36
37	Circlip (Snap Ring)	1	Steel	P6010037	→	37
38	Casing Wear Ring	2	Bronze	P6010372	→	38
39	Pin (CWR)	2	Steel	P6010226	→	39
42	Impeller*	1				42
43	Shaft*	1				43
44	Impeller Key	1	Steel	P6010074	→	44
45	Coupling Key	1	Steel	P6010075	→	45
46	Bearing Gland A (Inboard)	1	Cast Iron	P6010105	→	46
47	Plug 1/2" (Lower Casing)	10	Steel	P6010069	→	47
48	Casing*	1				48

*Denotes catalog item with multiple material configurations. Refer to item-specific replacement part table
"→" Denotes identical part number

CAT. NO.	PART DESCRIPTION	QTY.	MATL.	e-HSC 8X8X7.5	e-HSC 8X8X7.5	CAT. NO.
1	Large Casing Bolt	4	Steel	P6010257	→	1
2	Large Casing Washer	4	Steel	P6010026	→	2
4	Paper Pad (Inlet)	1	Cardboard	P6013346	→	4
5	Paper Pad (Outlet)	1	Cardboard	P6013347	→	5
6	Casing Washer	12	Steel	P6010026	→	6
7	Casing Bolt	12	Steel	P6010017	→	7
8	Tapered Pin Nut	2	Steel	P6010012	→	8
9	Tapered Pin	2	Steel	P6010030	→	9
10	Plug 1/2" (Upper Casing)	1	Steel	P6010069	→	10
11	Jacking Screw	2	Steel	P6010002	→	11
12	Bolts (Bearing Gland)	8	Steel	P6010240	→	12
13	Washer (Bearing Gland)	8	Steel	P6010239	→	13
14	Plug (Bearing Gland)	2	Steel	P6010066	→	14
15A	Bearing Gland Gasket	2	Cardboard	P6010990	→	15A
15	Bearing Gland B (Outboard)	1	Cast Iron	P6010909	→	15
16	Locknut (Bearing)	1	Steel	P6010980	→	16
17	Lockwasher (Bearing)	1	Steel	P6010981	→	17
18	Deep Groove Ball Bearing	2	Steel	P6010989	→	18
19	Jacking Screw (BH)	4	Steel	P6010265	→	19
20	Screw (BH top)	2	Steel	P6010010	→	20
21	Grease Cup	2	Brass	P6010235	→	21
22	Bearing Housing	2	Cast Iron	P6010973	→	22
23	Bolt (Bearing Housing)	8	Steel	P6010009	→	23
24	Washer (Bearing Housing)	8	Steel	P6010025	→	24
25	Screw (Vibration sensor)	6	Steel	P6010067	→	25
25A	Screw (Temperature sensor)	4	Steel	P6010066	→	25A
26	Lip Seal	2	NBR	P6010988	→	26
27	Shoulder Ring	1	Steel	P6010982	→	27
28	Seal Gland	2	Cast Iron	P6010971	→	28
29	Bolt (Seal Gland)	8	Steel	P6010240	→	29
30	Washer (Seal Gland)	8	Steel	P6010239	→	30
31	O-Ring (Seal Gland)	2	FKM	P6010987	→	31
32	O-Ring (Stuffing Box)	4	FKM	P6010983	→	32
33	Stuffing Box	2	Cast Iron	P6010912	→	33
34	Pin (Seal Body)	2	Steel	P6010226	→	34
35	Mechanical Seal*	2				35
36	Shoulder Ring (MS)	1	SS 304	P6010984	→	36
37	Circlip (Snap Ring)	1	Steel	P6010985	→	37
38	Casing Wear Ring	2	Bronze	P6010975	→	38
39	Pin (CWR)	2	Steel	P6010226	→	39
42	Impeller*	1				42
43	Shaft*	1				43
44	Impeller Key	1	Steel	P6010986	→	44
45	Coupling Key	1	Steel	P6010991	→	45
46	Bearing Gland A (Inboard)	1	Cast Iron	P6010911	→	46
47	Plug 1/2" (Lower Casing)	10	Steel	P6010069	→	47
48	Casing*	1				48

*Denotes catalog item with multiple material configurations. Refer to item-specific replacement part table
"→" Denotes identical part number

CAT. NO.	PART DESCRIPTION	QTY.	MATL.	e-HSC 8X10X10	e-HSC 8X10X9.5	CAT. NO.
1	Large Casing Bolt	4	Steel	P6010257	→	1
2	Large Casing Washer	4	Steel	P6010026	→	2
4	Paper Pad (Inlet)	1	Cardboard	P6013144	→	4
5	Paper Pad (Outlet)	1	Cardboard	P6013145	→	5
6	Casing Washer	15	Steel	P6010026	→	6
7	Casing Bolt	15	Steel	P6010017	→	7
8	Tapered Pin Nut	2	Steel	P6010012	→	8
9	Tapered Pin	2	Steel	P6010030	→	9
10	Plug 1/2" (Upper Casing)	1	Steel	P6010069	→	10
11	Jacking Screw	2	Steel	P6010002	→	11
12	Bolts (Bearing Gland)	8	Steel	P6010240	→	12
13	Washer (Bearing Gland)	8	Steel	P6010239	→	13
14	Plug (Bearing Gland)	2	Steel	P6010066	→	14
15A	Bearing Gland Gasket	2	Cardboard	P6010253	→	15A
15	Bearing Gland B (Outboard)	1	Cast Iron	P6010267	→	15
16	Locknut (Bearing)	1	Steel	P6010237	→	16
17	Lockwasher (Bearing)	1	Steel	P6010238	→	17
18	Deep Groove Ball Bearing	2	Steel	P6010252	→	18
19	Jacking Screw (BH)	4	Steel	P6010265	→	19
20	Screw (BH top)	2	Steel	P6010010	→	20
21	Grease Cup	2	Brass	P6010235	→	21
22	Bearing Housing	2	Cast Iron	P6010367	→	22
23	Bolt (Bearing Housing)	8	Steel	P6010009	→	23
24	Washer (Bearing Housing)	8	Steel	P6010025	→	24
25	Screw (Vibration sensor)	6	Steel	P6010067	→	25
25A	Screw (Temperature sensor)	4	Steel	P6010066	→	25A
26	Lip Seal	2	NBR	P6010251	→	26
27	Shoulder Ring	1	Steel	P6010241	→	27
28	Seal Gland	2	Cast Iron	P6010365	→	28
29	Bolt (Seal Gland)	8	Steel	P6010240	→	29
30	Washer (Seal Gland)	8	Steel	P6010239	→	30
31	O-Ring (Seal Gland)	2	FKM	P6010244	→	31
32	O-Ring (Stuffing Box)	4	FKM	P6010243	→	32
33	Stuffing Box	2	Cast Iron	P6010268	→	33
34	Pin (Seal Body)	2	Steel	P6010226	→	34
35	Mechanical Seal*	2				35
36	Shoulder Ring (MS)	1	SS 304	P6010242	→	36
37	Circlip (Snap Ring)	1	Steel	P6010245	→	37
38	Casing Wear Ring	2	Bronze	P6013148	→	38
39	Pin (CWR)	2	Steel	P6010226	→	39
42	Impeller*	1				42
43	Shaft*	1				43
44	Impeller Key	1	Steel	P6010250	→	44
45	Coupling Key	1	Steel	P6010247	→	45
46	Bearing Gland A (Inboard)	1	Cast Iron	P6010369	→	46
47	Plug 1/2" (Lower Casing)	10	Steel	P6010069	→	47
48	Casing*	1				48

*Denotes catalog item with multiple material configurations. Refer to item-specific replacement part table
"→" Denotes identical part number

CAT. NO.	PART DESCRIPTION	QTY.	MATL.	e-HSC 8X10X13.5	e-HSC 8X10X13	CAT. NO.
1	Large Casing Bolt	4	Steel	P6010257	→	1
2	Large Casing Washer	4	Steel	P6010026	→	2
4	Paper Pad (Inlet)	1	Cardboard	P6011009	→	4
5	Paper Pad (Outlet)	1	Cardboard	P6011010	→	5
6	Casing Washer	14	Steel	P6010026	→	6
7	Casing Bolt	14	Steel	P6010017	→	7
8	Tapered Pin Nut	2	Steel	P6010012	→	8
9	Tapered Pin	2	Steel	P6010030	→	9
10	Plug 1/2" (Upper Casing)	1	Steel	P6010069	→	10
11	Jacking Screw	2	Steel	P6010002	→	11
12	Bolts (Bearing Gland)	8	Steel	P6010007	→	12
13	Washer (Bearing Gland)	8	Steel	P6010025	→	13
14	Plug (Bearing Gland)	2	Steel	P6010071	→	14
15A	Bearing Gland Gasket	2	Cardboard	P6010103	→	15A
15	Bearing Gland B (Outboard)	1	Cast Iron	P6010087	→	15
16	Locknut (Bearing)	1	Steel	P6010040	→	16
17	Lockwasher (Bearing)	1	Steel	P6010033	→	17
18	Deep Groove Ball Bearing	2	Steel	P6010102	→	18
19	Jacking Screw (BH)	4	Steel	P6010001	→	19
20	Screw (BH top)	2	Steel	P6010010	→	20
21	Grease Cup	2	Brass	P6010235	→	21
22	Bearing Housing	2	Cast Iron	P6010101	→	22
23	Bolt (Bearing Housing)	8	Steel	P6010008	→	23
24	Washer (Bearing Housing)	8	Steel	P6010027	→	24
25	Screw (Vibration sensor)	6	Steel	P6010067	→	25
25A	Screw (Temperature sensor)	4	Steel	P6010066	→	25A
26	Lip Seal	2	NBR	P6010061	→	26
27	Shoulder Ring	1	Steel	P6010043	→	27
28	Seal Gland	2	Cast Iron	P6010099	→	28
29	Bolt (Seal Gland)	8	Steel	P6010007	→	29
30	Washer (Seal Gland)	8	Steel	P6010025	→	30
31	O-Ring (Seal Gland)	2	FKM	P6010056	→	31
32	O-Ring (Stuffing Box)	4	FKM	P6010220	→	32
33	Stuffing Box	2	Cast Iron	P6010907	→	33
34	Pin (Seal Body)	2	Steel	P6010036	→	34
35	Mechanical Seal*	2				35
36	Shoulder Ring (MS)	1	SS 304	P6010047	→	36
37	Circlip (Snap Ring)	1	Steel	P6010037	→	37
38	Casing Wear Ring	2	Bronze	P6010373	→	38
39	Pin (CWR)	2	Steel	P6010036	→	39
42	Impeller*	1				42
43	Shaft*	1				43
44	Impeller Key	1	Steel	P6010074	→	44
45	Coupling Key	1	Steel	P6010075	→	45
46	Bearing Gland A (Inboard)	1	Cast Iron	P6010105	→	46
47	Plug 1/2" (Lower Casing)	10	Steel	P6010069	→	47
48	Casing*	1				48

*Denotes catalog item with multiple material configurations. Refer to item-specific replacement part table
"→" Denotes identical part number

CAT. NO.	PART DESCRIPTION	QTY.	MATL.	e-HSC 8X10X17	e-HSC 8X10X16	CAT. NO.
1	Large Casing Bolt	4	Steel	P6010257	→	1
2	Large Casing Washer	4	Steel	P6010026	→	2
4	Paper Pad (Inlet)	1	Cardboard	P6011001	→	4
5	Paper Pad (Outlet)	1	Cardboard	P6011002	→	5
6	Casing Washer	19	Steel	P6010026	→	6
7	Casing Bolt	19	Steel	P6010017	→	7
8	Tapered Pin Nut	2	Steel	P6010012	→	8
9	Tapered Pin	2	Steel	P6010030	→	9
10	Plug 1/2" (Upper Casing)	1	Steel	P6010069	→	10
11	Jacking Screw	2	Steel	P6010002	→	11
12	Bolts (Bearing Gland)	8	Steel	P6010007	→	12
13	Washer (Bearing Gland)	8	Steel	P6010025	→	13
14	Plug (Bearing Gland)	2	Steel	P6010071	→	14
15A	Bearing Gland Gasket	2	Cardboard	P6010103	→	15A
15	Bearing Gland B (Outboard)	1	Cast Iron	P6010087	→	15
16	Locknut (Bearing)	1	Steel	P6010040	→	16
17	Lockwasher (Bearing)	1	Steel	P6010033	→	17
18	Deep Groove Ball Bearing	2	Steel	P6010102	→	18
19	Jacking Screw (BH)	4	Steel	P6010001	→	19
20	Screw (BH top)	2	Steel	P6010010	→	20
21	Grease Cup	2	Brass	P6010235	→	21
22	Bearing Housing	2	Cast Iron	P6010101	→	22
23	Bolt (Bearing Housing)	8	Steel	P6010008	→	23
24	Washer (Bearing Housing)	8	Steel	P6010027	→	24
25	Screw (Vibration sensor)	6	Steel	P6010067	→	25
25A	Screw (Temperature sensor)	4	Steel	P6010066	→	25A
26	Lip Seal	2	NBR	P6010061	→	26
27	Shoulder Ring	1	Steel	P6010043	→	27
28	Seal Gland	2	Cast Iron	P6010099	→	28
29	Bolt (Seal Gland)	8	Steel	P6010007	→	29
30	Washer (Seal Gland)	8	Steel	P6010025	→	30
31	O-Ring (Seal Gland)	2	FKM	P6010056	→	31
32	O-Ring (Stuffing Box)	4	FKM	P6010220	→	32
33	Stuffing Box	2	Cast Iron	P6010088	→	33
34	Pin (Seal Body)	2	Steel	P6010036	→	34
35	Mechanical Seal*	2				35
36	Shoulder Ring (MS)	1	SS 304	P6010047	→	36
37	Circlip (Snap Ring)	1	Steel	P6010037	→	37
38	Casing Wear Ring	2	Bronze	P6010166	→	38
39	Pin (CWR)	2	Steel	P6010036	→	39
42	Impeller*	1				42
43	Shaft*	1				43
44	Impeller Key	1	Steel	P6010074	→	44
45	Coupling Key	1	Steel	P6010075	→	45
46	Bearing Gland A (Inboard)	1	Cast Iron	P6010105	→	46
47	Plug 1/2" (Lower Casing)	10	Steel	P6010069	→	47
48	Casing*	1				48

*Denotes catalog item with multiple material configurations. Refer to item-specific replacement part table
"→" Denotes identical part number

CAT. NO.	PART DESCRIPTION	QTY.	MATL.	e-HSC 8X10X21	e-HSC 8X10X20	CAT. NO.
1	Large Casing Bolt	4	Steel	P6010020	→	1
2	Large Casing Washer	4	Steel	P6010026	→	2
4	Paper Pad (Inlet)	1	Cardboard	P6012688	→	4
5	Paper Pad (Outlet)	1	Cardboard	P6012689	→	5
6	Casing Washer	20	Steel	P6010026	→	6
7	Casing Bolt	20	Steel	P6010019	→	7
8	Tapered Pin Nut	2	Steel	P6010013	→	8
9	Tapered Pin	2	Steel	P6010222	→	9
10	Plug 1/2" (Upper Casing)	1	Steel	P6010069	→	10
11	Jacking Screw	2	Steel	P6010003	→	11
12	Bolts (Bearing Gland)	8	Steel	P6010007	→	12
13	Washer (Bearing Gland)	8	Steel	P6010025	→	13
14	Plug (Bearing Gland)	2	Steel	P6010071	→	14
15A	Bearing Gland Gasket	2	Cardboard	P6010146	→	15A
15	Bearing Gland B (Outboard)	1	Cast Iron	P6010130	→	15
16	Locknut (Bearing)	1	Steel	P6010041	→	16
17	Lockwasher (Bearing)	1	Steel	P6010034	→	17
18	Deep Groove Ball Bearing	2	Steel	P6010145	→	18
19	Jacking Screw (BH)	4	Steel	P6010001	→	19
20	Screw (BH top)	2	Steel	P6010010	→	20
21	Grease Cup	2	Brass	P6010235	→	21
22	Bearing Housing	2	Cast Iron	P6010144	→	22
23	Bolt (Bearing Housing)	8	Steel	P6010008	→	23
24	Washer (Bearing Housing)	8	Steel	P6010027	→	24
25	Screw (Vibration sensor)	6	Steel	P6010067	→	25
25A	Screw (Temperature sensor)	4	Steel	P6010066	→	25A
26	Lip Seal	2	NBR	P6010062	→	26
27	Shoulder Ring	1	Steel	P6010045	→	27
28	Seal Gland	2	Cast Iron	P6010142	→	28
29	Bolt (Seal Gland)	8	Steel	P6010007	→	29
30	Washer (Seal Gland)	8	Steel	P6010025	→	30
31	O-Ring (Seal Gland)	2	FKM	P6010058	→	31
32	O-Ring (Stuffing Box)	4	FKM	P6010057	→	32
33	Stuffing Box	2	Cast Iron	P6010131	→	33
34	Pin (Seal Body)	2	Steel	P6010036	→	34
35	Mechanical Seal*	2				35
36	Shoulder Ring (MS)	1	SS 304	P6010046	→	36
37	Circlip (Snap Ring)	1	Steel	P6010038	→	37
38	Casing Wear Ring	2	Bronze	P6010166	→	38
39	Pin (CWR)	2	Steel	P6010036	→	39
42	Impeller*	1				42
43	Shaft*	1				43
44	Impeller Key	1	Steel	P6010905	→	44
45	Coupling Key	1	Steel	P6010074	→	45
46	Bearing Gland A (Inboard)	1	Cast Iron	P6010148	→	46
47	Plug 1/2" (Lower Casing)	10	Steel	P6010069	→	47
48	Casing*	1				48

*Denotes catalog item with multiple material configurations. Refer to item-specific replacement part table
"→" Denotes identical part number

CAT. NO.	PART DESCRIPTION	QTY.	MATL.	e-HSC 8X10X26	e-HSC 8X10X25	CAT. NO.
1	Large Casing Bolt	4	Steel	P6010024	→	1
2	Large Casing Washer	4	Steel	P6010029	→	2
4	Paper Pad (Inlet)	1	Cardboard	P6013146	→	4
5	Paper Pad (Outlet)	1	Cardboard	P6013147	→	5
6	Casing Washer	20	Steel	P6010029	→	6
7	Casing Bolt	20	Steel	P6010023	→	7
8	Tapered Pin Nut	2	Steel	P6010013	→	8
9	Tapered Pin	2	Steel	P6010031	→	9
10	Plug 1/2" (Upper Casing)	1	Steel	P6010069	→	10
11	Jacking Screw	2	Steel	P6010004	→	11
12	Bolts (Bearing Gland)	8	Steel	P6010007	→	12
13	Washer (Bearing Gland)	8	Steel	P6010025	→	13
14	Plug (Bearing Gland)	2	Steel	P6010071	→	14
15A	Bearing Gland Gasket	2	Cardboard	P6010906	→	15A
15	Bearing Gland B (Outboard)	1	Cast Iron	P6010893	→	15
16	Locknut (Bearing)	1	Steel	P6010894	→	16
17	Lockwasher (Bearing)	1	Steel	P6010895	→	17
18	Deep Groove Ball Bearing	2	Steel	P6010879	→	18
19	Jacking Screw (BH)	4	Steel	P6010001	→	19
20	Screw (BH top)	2	Steel	P6010010	→	20
21	Grease Cup	2	Brass	P6010235	→	21
22	Bearing Housing	2	Cast Iron	P6010889	→	22
23	Bolt (Bearing Housing)	8	Steel	P6010008	→	23
24	Washer (Bearing Housing)	8	Steel	P6010027	→	24
25	Screw (Vibration sensor)	6	Steel	P6010067	→	25
25A	Screw (Temperature sensor)	4	Steel	P6010066	→	25A
26	Lip Seal	2	NBR	P6010904	→	26
27	Shoulder Ring	1	Steel	P6010896	→	27
28	Seal Gland	2	Cast Iron	P6010887	→	28
29	Bolt (Seal Gland)	8	Steel	P6010007	→	29
30	Washer (Seal Gland)	8	Steel	P6010025	→	30
31	O-Ring (Seal Gland)	2	FKM	P6010902	→	31
32	O-Ring (Stuffing Box)	4	FKM	P6010897	→	32
33	Stuffing Box	2	Cast Iron	P6010886	→	33
34	Pin (Seal Body)	2	Steel	P6010036	→	34
35	Mechanical Seal*	2				35
36	Shoulder Ring (MS)	1	SS 304	P6010899	→	36
37	Circlip (Snap Ring)	1	Steel	P6010900	→	37
38	Casing Wear Ring	2	Bronze	P6010122	→	38
39	Pin (CWR)	2	Steel	P6010036	→	39
42	Impeller*	1				42
43	Shaft*	1				43
44	Impeller Key	1	Steel	P6010901	→	44
45	Coupling Key	1	Steel	P6010905	→	45
46	Bearing Gland A (Inboard)	1	Cast Iron	P6010891	→	46
47	Plug 1/2" (Lower Casing)	10	Steel	P6010069	→	47
48	Casing*	1				48

*Denotes catalog item with multiple material configurations. Refer to item-specific replacement part table
"→" Denotes identical part number

CAT. NO.	PART DESCRIPTION	QTY.	MATL.	e-HSC 10X10X8	e-HSC 10X10X7.5	CAT. NO.
1	Large Casing Bolt	4	Steel	P6010257	→	1
2	Large Casing Washer	4	Steel	P6010026	→	2
4	Paper Pad (Inlet)	1	Cardboard	P6013344	→	4
5	Paper Pad (Outlet)	1	Cardboard	P6013345	→	5
6	Casing Washer	15	Steel	P6010026	→	6
7	Casing Bolt	15	Steel	P6010017	→	7
8	Tapered Pin Nut	2	Steel	P6010012	→	8
9	Tapered Pin	2	Steel	P6010030	→	9
10	Plug 1/2" (Upper Casing)	1	Steel	P6010069	→	10
11	Jacking Screw	2	Steel	P6010002	→	11
12	Bolts (Bearing Gland)	8	Steel	P6010240	→	12
13	Washer (Bearing Gland)	8	Steel	P6010239	→	13
14	Plug (Bearing Gland)	2	Steel	P6010066	→	14
15A	Bearing Gland Gasket	2	Cardboard	P6010990	→	15A
15	Bearing Gland B (Outboard)	1	Cast Iron	P6010909	→	15
16	Locknut (Bearing)	1	Steel	P6010980	→	16
17	Lockwasher (Bearing)	1	Steel	P6010981	→	17
18	Deep Groove Ball Bearing	2	Steel	P6010989	→	18
19	Jacking Screw (BH)	4	Steel	P6010265	→	19
20	Screw (BH top)	2	Steel	P6010010	→	20
21	Grease Cup	2	Brass	P6010235	→	21
22	Bearing Housing	2	Cast Iron	P6010973	→	22
23	Bolt (Bearing Housing)	8	Steel	P6010009	→	23
24	Washer (Bearing Housing)	8	Steel	P6010025	→	24
25	Screw (Vibration sensor)	6	Steel	P6010067	→	25
25A	Screw (Temperature sensor)	4	Steel	P6010066	→	25A
26	Lip Seal	2	NBR	P6010988	→	26
27	Shoulder Ring	1	Steel	P6010982	→	27
28	Seal Gland	2	Cast Iron	P6010971	→	28
29	Bolt (Seal Gland)	8	Steel	P6010240	→	29
30	Washer (Seal Gland)	8	Steel	P6010239	→	30
31	O-Ring (Seal Gland)	2	FKM	P6010987	→	31
32	O-Ring (Stuffing Box)	4	FKM	P6010983	→	32
33	Stuffing Box	2	Cast Iron	P6013513	→	33
34	Pin (Seal Body)	2	Steel	P6010226	→	34
35	Mechanical Seal*	2				35
36	Shoulder Ring (MS)	1	SS 304	P6010984	→	36
37	Circlip (Snap Ring)	1	Steel	P6010985	→	37
38	Casing Wear Ring	2	Bronze	P6010371	→	38
39	Pin (CWR)	2	Steel	P6010226	→	39
42	Impeller*	1				42
43	Shaft*	1				43
44	Impeller Key	1	Steel	P6013518	→	44
45	Coupling Key	1	Steel	P6010991	→	45
46	Bearing Gland A (Inboard)	1	Cast Iron	P6010911	→	46
47	Plug 1/2" (Lower Casing)	10	Steel	P6010069	→	47
48	Casing*	1				48

*Denotes catalog item with multiple material configurations. Refer to item-specific replacement part table
"→" Denotes identical part number

CAT. NO.	PART DESCRIPTION	QTY.	MATL.	e-HSC 10X12X15.5	e-HSC 10X12X14.5	CAT. NO.
1	Large Casing Bolt	4	Steel	P6010257	→	1
2	Large Casing Washer	4	Steel	P6010026	→	2
4	Paper Pad (Inlet)	1	Cardboard	P6010081	→	4
5	Paper Pad (Outlet)	1	Cardboard	P6010998	→	5
6	Casing Washer	17	Steel	P6010026	→	6
7	Casing Bolt	17	Steel	P6010017	→	7
8	Tapered Pin Nut	2	Steel	P6010012	→	8
9	Tapered Pin	2	Steel	P6010030	→	9
10	Plug 1/2" (Upper Casing)	1	Steel	P6010069	→	10
11	Jacking Screw	2	Steel	P6010002	→	11
12	Bolts (Bearing Gland)	8	Steel	P6010007	→	12
13	Washer (Bearing Gland)	8	Steel	P6010025	→	13
14	Plug (Bearing Gland)	2	Steel	P6010071	→	14
15A	Bearing Gland Gasket	2	Cardboard	P6010146	→	15A
15	Bearing Gland B (Outboard)	1	Cast Iron	P6010130	→	15
16	Locknut (Bearing)	1	Steel	P6010041	→	16
17	Lockwasher (Bearing)	1	Steel	P6010034	→	17
18	Deep Groove Ball Bearing	2	Steel	P6010145	→	18
19	Jacking Screw (BH)	4	Steel	P6010001	→	19
20	Screw (BH top)	2	Steel	P6010010	→	20
21	Grease Cup	2	Brass	P6010235	→	21
22	Bearing Housing	2	Cast Iron	P6010144	→	22
23	Bolt (Bearing Housing)	8	Steel	P6010008	→	23
24	Washer (Bearing Housing)	8	Steel	P6010027	→	24
25	Screw (Vibration sensor)	6	Steel	P6010067	→	25
25A	Screw (Temperature sensor)	4	Steel	P6010066	→	25A
26	Lip Seal	2	NBR	P6010062	→	26
27	Shoulder Ring	1	Steel	P6010045	→	27
28	Seal Gland	2	Cast Iron	P6010142	→	28
29	Bolt (Seal Gland)	8	Steel	P6010007	→	29
30	Washer (Seal Gland)	8	Steel	P6010025	→	30
31	O-Ring (Seal Gland)	2	FKM	P6010058	→	31
32	O-Ring (Stuffing Box)	4	FKM	P6010057	→	32
33	Stuffing Box	2	Cast Iron	P6010131	→	33
34	Pin (Seal Body)	2	Steel	P6010036	→	34
35	Mechanical Seal*	2				35
36	Shoulder Ring (MS)	1	SS 304	P6010046	→	36
37	Circlip (Snap Ring)	1	Steel	P6010038	→	37
38	Casing Wear Ring	2	Bronze	P6010106	→	38
39	Pin (CWR)	2	Steel	P6010036	→	39
42	Impeller*	1				42
43	Shaft*	1				43
44	Impeller Key	1	Steel	P6010076	→	44
45	Coupling Key	1	Steel	P6010074	→	45
46	Bearing Gland A (Inboard)	1	Cast Iron	P6010148	→	46
47	Plug 1/2" (Lower Casing)	10	Steel	P6010069	→	47
48	Casing*	1				48

*Denotes catalog item with multiple material configurations. Refer to item-specific replacement part table
"→" Denotes identical part number

CAT. NO.	PART DESCRIPTION	QTY.	MATL.	e-HSC 10X12X19	e-HSC 10X12X18	CAT. NO.
1	Large Casing Bolt	4	Steel	P6010020	→	1
2	Large Casing Washer	4	Steel	P6010026	→	2
4	Paper Pad (Inlet)	1	Cardboard	P6011345	→	4
5	Paper Pad (Outlet)	1	Cardboard	P6011346	→	5
6	Casing Washer	21	Steel	P6010026	→	6
7	Casing Bolt	21	Steel	P6010019	→	7
8	Tapered Pin Nut	2	Steel	P6010013	→	8
9	Tapered Pin	2	Steel	P6010222	→	9
10	Plug 1/2" (Upper Casing)	1	Steel	P6010069	→	10
11	Jacking Screw	2	Steel	P6010003	→	11
12	Bolts (Bearing Gland)	8	Steel	P6010007	→	12
13	Washer (Bearing Gland)	8	Steel	P6010025	→	13
14	Plug (Bearing Gland)	2	Steel	P6010071	→	14
15A	Bearing Gland Gasket	2	Cardboard	P6010146	→	15A
15	Bearing Gland B (Outboard)	1	Cast Iron	P6010130	→	15
16	Locknut (Bearing)	1	Steel	P6010041	→	16
17	Lockwasher (Bearing)	1	Steel	P6010034	→	17
18	Deep Groove Ball Bearing	2	Steel	P6010145	→	18
19	Jacking Screw (BH)	4	Steel	P6010001	→	19
20	Screw (BH top)	2	Steel	P6010010	→	20
21	Grease Cup	2	Brass	P6010235	→	21
22	Bearing Housing	2	Cast Iron	P6010144	→	22
23	Bolt (Bearing Housing)	8	Steel	P6010008	→	23
24	Washer (Bearing Housing)	8	Steel	P6010027	→	24
25	Screw (Vibration sensor)	6	Steel	P6010067	→	25
25A	Screw (Temperature sensor)	4	Steel	P6010066	→	25A
26	Lip Seal	2	NBR	P6010062	→	26
27	Shoulder Ring	1	Steel	P6010045	→	27
28	Seal Gland	2	Cast Iron	P6010142	→	28
29	Bolt (Seal Gland)	8	Steel	P6010007	→	29
30	Washer (Seal Gland)	8	Steel	P6010025	→	30
31	O-Ring (Seal Gland)	2	FKM	P6010058	→	31
32	O-Ring (Stuffing Box)	4	FKM	P6010057	→	32
33	Stuffing Box	2	Cast Iron	P6010131	→	33
34	Pin (Seal Body)	2	Steel	P6010036	→	34
35	Mechanical Seal*	2				35
36	Shoulder Ring (MS)	1	SS 304	P6010046	→	36
37	Circlip (Snap Ring)	1	Steel	P6010038	→	37
38	Casing Wear Ring	2	Bronze	P6010106	→	38
39	Pin (CWR)	2	Steel	P6010036	→	39
42	Impeller*	1				42
43	Shaft*	1				43
44	Impeller Key	1	Steel	P6010076	→	44
45	Coupling Key	1	Steel	P6010074	→	45
46	Bearing Gland A (Inboard)	1	Cast Iron	P6010148	→	46
47	Plug 1/2" (Lower Casing)	10	Steel	P6010069	→	47
48	Casing*	1				48

*Denotes catalog item with multiple material configurations. Refer to item-specific replacement part table
"→" Denotes identical part number

CAT. NO.	PART DESCRIPTION	QTY.	MATL.	e-HSC 10X12X24	e-HSC 10X12X23	CAT. NO.
1	Large Casing Bolt	4	Steel	P6010024	→	1
2	Large Casing Washer	4	Steel	P6010029	→	2
4	Paper Pad (Inlet)	1	Cardboard	P6011194	→	4
5	Paper Pad (Outlet)	1	Cardboard	P6011195	→	5
6	Casing Washer	20	Steel	P6010029	→	6
7	Casing Bolt	20	Steel	P6010023	→	7
8	Tapered Pin Nut	2	Steel	P6010013	→	8
9	Tapered Pin	2	Steel	P6010031	→	9
10	Plug 1/2" (Upper Casing)	1	Steel	P6010069	→	10
11	Jacking Screw	2	Steel	P6010004	→	11
12	Bolts (Bearing Gland)	8	Steel	P6010007	→	12
13	Washer (Bearing Gland)	8	Steel	P6010025	→	13
14	Plug (Bearing Gland)	2	Steel	P6010071	→	14
15A	Bearing Gland Gasket	2	Cardboard	P6010204	→	15A
15	Bearing Gland B (Outboard)	1	Cast Iron	P6010192	→	15
16	Locknut (Bearing)	1	Steel	P6010042	→	16
17	Lockwasher (Bearing)	1	Steel	P6010035	→	17
18	Deep Groove Ball Bearing	2	Steel	P6010203	→	18
19	Jacking Screw (BH)	4	Steel	P6010001	→	19
20	Screw (BH top)	2	Steel	P6010010	→	20
21	Grease Cup	2	Brass	P6010235	→	21
22	Bearing Housing	2	Cast Iron	P6010202	→	22
23	Bolt (Bearing Housing)	8	Steel	P6010008	→	23
24	Washer (Bearing Housing)	8	Steel	P6010027	→	24
25	Screw (Vibration sensor)	6	Steel	P6010067	→	25
25A	Screw (Temperature sensor)	4	Steel	P6010066	→	25A
26	Lip Seal	2	NBR	P6010063	→	26
27	Shoulder Ring	1	Steel	P6010048	→	27
28	Seal Gland	2	Cast Iron	P6010200	→	28
29	Bolt (Seal Gland)	8	Steel	P6010009	→	29
30	Washer (Seal Gland)	8	Steel	P6010025	→	30
31	O-Ring (Seal Gland)	2	FKM	P6010060	→	31
32	O-Ring (Stuffing Box)	4	FKM	P6010059	→	32
33	Stuffing Box	2	Cast Iron	P6011067	→	33
34	Pin (Seal Body)	2	Steel	P6010036	→	34
35	Mechanical Seal*	2				35
36	Shoulder Ring (MS)	1	SS 304	P6010049	→	36
37	Circlip (Snap Ring)	1	Steel	P6010039	→	37
38	Casing Wear Ring	2	Bronze	P6011206	→	38
39	Pin (CWR)	2	Steel	P6010036	→	39
42	Impeller*	1				42
43	Shaft*	1				43
44	Impeller Key	1	Steel	P6010078	→	44
45	Coupling Key	1	Steel	P6010079	→	45
46	Bearing Gland A (Inboard)	1	Cast Iron	P6010206	→	46
47	Plug 1/2" (Lower Casing)	10	Steel	P6010069	→	47
48	Casing*	1				48

*Denotes catalog item with multiple material configurations. Refer to item-specific replacement part table
"→" Denotes identical part number

CAT. NO.	PART DESCRIPTION	QTY.	MATL.	e-HSC 12X12X9	e-HSC 12X12X8.5	CAT. NO.
1	Large Casing Bolt	4	Steel	P6010257	→	1
2	Large Casing Washer	4	Steel	P6010026	→	2
4	Paper Pad (Inlet)	1	Cardboard	P6013342	→	4
5	Paper Pad (Outlet)	1	Cardboard	P6013343	→	5
6	Casing Washer	18	Steel	P6010026	→	6
7	Casing Bolt	18	Steel	P6010017	→	7
8	Tapered Pin Nut	2	Steel	P6010012	→	8
9	Tapered Pin	2	Steel	P6010030	→	9
10	Plug 1/2" (Upper Casing)	1	Steel	P6010069	→	10
11	Jacking Screw	2	Steel	P6010002	→	11
12	Bolts (Bearing Gland)	8	Steel	P6010240	→	12
13	Washer (Bearing Gland)	8	Steel	P6010239	→	13
14	Plug (Bearing Gland)	2	Steel	P6010066	→	14
15A	Bearing Gland Gasket	2	Cardboard	P6010253	→	15A
15	Bearing Gland B (Outboard)	1	Cast Iron	P6010267	→	15
16	Locknut (Bearing)	1	Steel	P6010237	→	16
17	Lockwasher (Bearing)	1	Steel	P6010238	→	17
18	Deep Groove Ball Bearing	2	Steel	P6010252	→	18
19	Jacking Screw (BH)	4	Steel	P6010236	→	19
20	Screw (BH top)	2	Steel	P6010010	→	20
21	Grease Cup	2	Brass	P6010235	→	21
22	Bearing Housing	2	Cast Iron	P6010367	→	22
23	Bolt (Bearing Housing)	8	Steel	P6010009	→	23
24	Washer (Bearing Housing)	8	Steel	P6010025	→	24
25	Screw (Vibration sensor)	6	Steel	P6010067	→	25
25A	Screw (Temperature sensor)	4	Steel	P6010066	→	25A
26	Lip Seal	2	NBR	P6010251	→	26
27	Shoulder Ring	1	Steel	P6010241	→	27
28	Seal Gland	2	Cast Iron	P6010365	→	28
29	Bolt (Seal Gland)	8	Steel	P6010240	→	29
30	Washer (Seal Gland)	8	Steel	P6010239	→	30
31	O-Ring (Seal Gland)	2	FKM	P6010244	→	31
32	O-Ring (Stuffing Box)	4	FKM	P6010243	→	32
33	Stuffing Box	2	Cast Iron	P6010270	→	33
34	Pin (Seal Body)	2	Steel	P6010226	→	34
35	Mechanical Seal*	2				35
36	Shoulder Ring (MS)	1	SS 304	P6010242	→	36
37	Circlip (Snap Ring)	1	Steel	P6010245	→	37
38	Casing Wear Ring	2	Bronze	P6012638	→	38
39	Pin (CWR)	2	Steel	P6010226	→	39
42	Impeller*	1				42
43	Shaft*	1				43
44	Impeller Key	1	Steel	P6011326	→	44
45	Coupling Key	1	Steel	P6010247	→	45
46	Bearing Gland A (Inboard)	1	Cast Iron	P6010369	→	46
47	Plug 1/2" (Lower Casing)	10	Steel	P6010069	→	47
48	Casing*	1				48

*Denotes catalog item with multiple material configurations. Refer to item-specific replacement part table
"→" Denotes identical part number

CAT. NO.	PART DESCRIPTION	QTY.	MATL.	e-HSC 12X12X10	e-HSC 12X12X9.5	CAT. NO.
1	Large Casing Bolt	4	Steel	P6010257	→	1
2	Large Casing Washer	4	Steel	P6010026	→	2
4	Paper Pad (Inlet)	1	Cardboard	P6010782	→	4
5	Paper Pad (Outlet)	1	Cardboard	P6011011	→	5
6	Casing Washer	17	Steel	P6010026	→	6
7	Casing Bolt	17	Steel	P6010019	→	7
8	Tapered Pin Nut	2	Steel	P6010013	→	8
9	Tapered Pin	2	Steel	P6010222	→	9
10	Plug 1/2" (Upper Casing)	1	Steel	P6010069	→	10
11	Jacking Screw	2	Steel	P6010003	→	11
12	Bolts (Bearing Gland)	8	Steel	P6010240	→	12
13	Washer (Bearing Gland)	8	Steel	P6010239	→	13
14	Plug (Bearing Gland)	2	Steel	P6010066	→	14
15A	Bearing Gland Gasket	2	Cardboard	P6010253	→	15A
15	Bearing Gland B (Outboard)	1	Cast Iron	P6010267	→	15
16	Locknut (Bearing)	1	Steel	P6010237	→	16
17	Lockwasher (Bearing)	1	Steel	P6010238	→	17
18	Deep Groove Ball Bearing	2	Steel	P6010252	→	18
19	Jacking Screw (BH)	4	Steel	P6010265	→	19
20	Screw (BH top)	2	Steel	P6010010	→	20
21	Grease Cup	2	Brass	P6010235	→	21
22	Bearing Housing	2	Cast Iron	P6010367	→	22
23	Bolt (Bearing Housing)	8	Steel	P6010009	→	23
24	Washer (Bearing Housing)	8	Steel	P6010025	→	24
25	Screw (Vibration sensor)	6	Steel	P6010067	→	25
25A	Screw (Temperature sensor)	4	Steel	P6010066	→	25A
26	Lip Seal	2	NBR	P6010251	→	26
27	Shoulder Ring	1	Steel	P6010241	→	27
28	Seal Gland	2	Cast Iron	P6010365	→	28
29	Bolt (Seal Gland)	8	Steel	P6010240	→	29
30	Washer (Seal Gland)	8	Steel	P6010239	→	30
31	O-Ring (Seal Gland)	2	FKM	P6010244	→	31
32	O-Ring (Stuffing Box)	4	FKM	P6010243	→	32
33	Stuffing Box	2	Cast Iron	P6010270	→	33
34	Pin (Seal Body)	2	Steel	P6010226	→	34
35	Mechanical Seal*	2				35
36	Shoulder Ring (MS)	1	SS 304	P6010242	→	36
37	Circlip (Snap Ring)	1	Steel	P6010245	→	37
38	Casing Wear Ring	2	Bronze	P6010374	→	38
39	Pin (CWR)	2	Steel	P6010226	→	39
42	Impeller*	1				42
43	Shaft*	1				43
44	Impeller Key	1	Steel	P6011326	→	44
45	Coupling Key	1	Steel	P6010247	→	45
46	Bearing Gland A (Inboard)	1	Cast Iron	P6010369	→	46
47	Plug 1/2" (Lower Casing)	10	Steel	P6010069	→	47
48	Casing*	1				48

*Denotes catalog item with multiple material configurations. Refer to item-specific replacement part table
"→" Denotes identical part number

CAT. NO.	PART DESCRIPTION	QTY.	MATL.	e-HSC 12X14X13	e-HSC 12X14X12.5	CAT. NO.
1	Large Casing Bolt	4	Steel	P6010020	→	1
2	Large Casing Washer	4	Steel	P6010026	→	2
4	Paper Pad (Inlet)	1	Cardboard	P6010221	→	4
5	Paper Pad (Outlet)	1	Cardboard	P6010999	→	5
6	Casing Washer	19	Steel	P6010026	→	6
7	Casing Bolt	19	Steel	P6010019	→	7
8	Tapered Pin Nut	2	Steel	P6010013	→	8
9	Tapered Pin	2	Steel	P6010222	→	9
10	Plug 1/2" (Upper Casing)	1	Steel	P6010069	→	10
11	Jacking Screw	2	Steel	P6010003	→	11
12	Bolts (Bearing Gland)	8	Steel	P6010007	→	12
13	Washer (Bearing Gland)	8	Steel	P6010025	→	13
14	Plug (Bearing Gland)	2	Steel	P6010071	→	14
15A	Bearing Gland Gasket	2	Cardboard	P6010146	→	15A
15	Bearing Gland B (Outboard)	1	Cast Iron	P6010130	→	15
16	Locknut (Bearing)	1	Steel	P6010041	→	16
17	Lockwasher (Bearing)	1	Steel	P6010034	→	17
18	Deep Groove Ball Bearing	2	Steel	P6010145	→	18
19	Jacking Screw (BH)	4	Steel	P6010001	→	19
20	Screw (BH top)	2	Steel	P6010010	→	20
21	Grease Cup	2	Brass	P6010235	→	21
22	Bearing Housing	2	Cast Iron	P6010144	→	22
23	Bolt (Bearing Housing)	8	Steel	P6010008	→	23
24	Washer (Bearing Housing)	8	Steel	P6010027	→	24
25	Screw (Vibration sensor)	6	Steel	P6010067	→	25
25A	Screw (Temperature sensor)	4	Steel	P6010066	→	25A
26	Lip Seal	2	NBR	P6010062	→	26
27	Shoulder Ring	1	Steel	P6010045	→	27
28	Seal Gland	2	Cast Iron	P6010142	→	28
29	Bolt (Seal Gland)	8	Steel	P6010007	→	29
30	Washer (Seal Gland)	8	Steel	P6010025	→	30
31	O-Ring (Seal Gland)	2	FKM	P6010058	→	31
32	O-Ring (Stuffing Box)	4	FKM	P6010057	→	32
33	Stuffing Box	2	Cast Iron	P6010131	→	33
34	Pin (Seal Body)	2	Steel	P6010036	→	34
35	Mechanical Seal*	2				35
36	Shoulder Ring (MS)	1	SS 304	P6010046	→	36
37	Circlip (Snap Ring)	1	Steel	P6010038	→	37
38	Casing Wear Ring	2	Bronze	P6010122	→	38
39	Pin (CWR)	2	Steel	P6010036	→	39
42	Impeller*	1				42
43	Shaft*	1				43
44	Impeller Key	1	Steel	P6010076	→	44
45	Coupling Key	1	Steel	P6010074	→	45
46	Bearing Gland A (Inboard)	1	Cast Iron	P6010148	→	46
47	Plug 1/2" (Lower Casing)	10	Steel	P6010069	→	47
48	Casing*	1				48

*Denotes catalog item with multiple material configurations. Refer to item-specific replacement part table
"→" Denotes identical part number

CAT. NO.	PART DESCRIPTION	QTY.	MATL.	e-HSC 12X16X18	e-HSC 12X16X17	CAT. NO.
1	Large Casing Bolt	4	Steel	P6010020	→	1
2	Large Casing Washer	4	Steel	P6010026	→	2
4	Paper Pad (Inlet)	1	Cardboard	P6011347	→	4
5	Paper Pad (Outlet)	1	Cardboard	P6011348	→	5
6	Casing Washer	20	Steel	P6010026	→	6
7	Casing Bolt	20	Steel	P6010019	→	7
8	Tapered Pin Nut	2	Steel	P6010013	→	8
9	Tapered Pin	2	Steel	P6010222	→	9
10	Plug 1/2" (Upper Casing)	1	Steel	P6010069	→	10
11	Jacking Screw	2	Steel	P6010003	→	11
12	Bolts (Bearing Gland)	8	Steel	P6010007	→	12
13	Washer (Bearing Gland)	8	Steel	P6010025	→	13
14	Plug (Bearing Gland)	2	Steel	P6010071	→	14
15A	Bearing Gland Gasket	2	Cardboard	P6010906	→	15A
15	Bearing Gland B (Outboard)	1	Cast Iron	P6010893	→	15
16	Locknut (Bearing)	1	Steel	P6010894	→	16
17	Lockwasher (Bearing)	1	Steel	P6010895	→	17
18	Deep Groove Ball Bearing	2	Steel	P6010879	→	18
19	Jacking Screw (BH)	4	Steel	P6010001	→	19
20	Screw (BH top)	2	Steel	P6010010	→	20
21	Grease Cup	2	Brass	P6010235	→	21
22	Bearing Housing	2	Cast Iron	P6010889	→	22
23	Bolt (Bearing Housing)	8	Steel	P6010008	→	23
24	Washer (Bearing Housing)	8	Steel	P6010027	→	24
25	Screw (Vibration sensor)	6	Steel	P6010067	→	25
25A	Screw (Temperature sensor)	4	Steel	P6010066	→	25A
26	Lip Seal	2	NBR	P6010904	→	26
27	Shoulder Ring	1	Steel	P6010896	→	27
28	Seal Gland	2	Cast Iron	P6010887	→	28
29	Bolt (Seal Gland)	8	Steel	P6010007	→	29
30	Washer (Seal Gland)	8	Steel	P6010025	→	30
31	O-Ring (Seal Gland)	2	FKM	P6010902	→	31
32	O-Ring (Stuffing Box)	4	FKM	P6010897	→	32
33	Stuffing Box	2	Cast Iron	P6010886	→	33
34	Pin (Seal Body)	2	Steel	P6010036	→	34
35	Mechanical Seal*	2				35
36	Shoulder Ring (MS)	1	SS 304	P6010899	→	36
37	Circlip (Snap Ring)	1	Steel	P6010900	→	37
38	Casing Wear Ring	2	Bronze	P6011472	→	38
39	Pin (CWR)	2	Steel	P6010036	→	39
42	Impeller*	1				42
43	Shaft*	1				43
44	Impeller Key	1	Steel	P6010901	→	44
45	Coupling Key	1	Steel	P6010905	→	45
46	Bearing Gland A (Inboard)	1	Cast Iron	P6010891	→	46
47	Plug 1/2" (Lower Casing)	10	Steel	P6010069	→	47
48	Casing*	1				48

*Denotes catalog item with multiple material configurations. Refer to item-specific replacement part table
"→" Denotes identical part number

CAT. NO.	PART DESCRIPTION	QTY.	MATL.	e-HSC 12X16X22	e-HSC 12X16X21	CAT. NO.
1	Large Casing Bolt	4	Steel	P6010024	→	1
2	Large Casing Washer	4	Steel	P6010029	→	2
4	Paper Pad (Inlet)	1	Cardboard	P6010083	→	4
5	Paper Pad (Outlet)	1	Cardboard	P6011004	→	5
6	Casing Washer	21	Steel	P6010029	→	6
7	Casing Bolt	21	Steel	P6010023	→	7
8	Tapered Pin Nut	2	Steel	P6010013	→	8
9	Tapered Pin	2	Steel	P6010031	→	9
10	Plug 1/2" (Upper Casing)	1	Steel	P6010069	→	10
11	Jacking Screw	2	Steel	P6010004	→	11
12	Bolts (Bearing Gland)	8	Steel	P6010007	→	12
13	Washer (Bearing Gland)	8	Steel	P6010025	→	13
14	Plug (Bearing Gland)	2	Steel	P6010071	→	14
15A	Bearing Gland Gasket	2	Cardboard	P6010204	→	15A
15	Bearing Gland B (Outboard)	1	Cast Iron	P6010192	→	15
16	Locknut (Bearing)	1	Steel	P6010042	→	16
17	Lockwasher (Bearing)	1	Steel	P6010035	→	17
18	Deep Groove Ball Bearing	2	Steel	P6010203	→	18
19	Jacking Screw (BH)	4	Steel	P6010001	→	19
20	Screw (BH top)	2	Steel	P6010010	→	20
21	Grease Cup	2	Brass	P6010235	→	21
22	Bearing Housing	2	Cast Iron	P6010202	→	22
23	Bolt (Bearing Housing)	8	Steel	P6010008	→	23
24	Washer (Bearing Housing)	8	Steel	P6010027	→	24
25	Screw (Vibration sensor)	6	Steel	P6010067	→	25
25A	Screw (Temperature sensor)	4	Steel	P6010066	→	25A
26	Lip Seal	2	NBR	P6010063	→	26
27	Shoulder Ring	1	Steel	P6010048	→	27
28	Seal Gland	2	Cast Iron	P6010200	→	28
29	Bolt (Seal Gland)	8	Steel	P6010009	→	29
30	Washer (Seal Gland)	8	Steel	P6010025	→	30
31	O-Ring (Seal Gland)	2	FKM	P6010060	→	31
32	O-Ring (Stuffing Box)	4	FKM	P6010059	→	32
33	Stuffing Box	2	Cast Iron	P6010193	→	33
34	Pin (Seal Body)	2	Steel	P6010036	→	34
35	Mechanical Seal*	2				35
36	Shoulder Ring (MS)	1	SS 304	P6010049	→	36
37	Circlip (Snap Ring)	1	Steel	P6010039	→	37
38	Casing Wear Ring	2	Bronze	P6010207	→	38
39	Pin (CWR)	2	Steel	P6010036	→	39
42	Impeller*	1				42
43	Shaft*	1				43
44	Impeller Key	1	Steel	P6010078	→	44
45	Coupling Key	1	Steel	P6010079	→	45
46	Bearing Gland A (Inboard)	1	Cast Iron	P6010206	→	46
47	Plug 1/2" (Lower Casing)	10	Steel	P6010069	→	47
48	Casing*	1				48

*Denotes catalog item with multiple material configurations. Refer to item-specific replacement part table
"→" Denotes identical part number

CAT. NO.	PART DESCRIPTION	QTY.	MATL.	e-HSC 12X16X28	e-HSC 12X16X27	CAT. NO.
1	Large Casing Bolt	4	Steel	P6010022	→	1
2	Large Casing Washer	4	Steel	P6010028	→	2
4	Paper Pad (Inlet)	1	Cardboard	P6011202	→	4
5	Paper Pad (Outlet)	1	Cardboard	P6011203	→	5
6	Casing Washer	20	Steel	P6010028	→	6
7	Casing Bolt	20	Steel	P6010021	→	7
8	Tapered Pin Nut	2	Steel	P6010013	→	8
9	Tapered Pin	2	Steel	P6011239	→	9
10	Plug 1/2" (Upper Casing)	1	Steel	P6010069	→	10
11	Jacking Screw	2	Steel	P6011224	→	11
12	Bolts (Bearing Gland)	8	Steel	P6010007	→	12
13	Washer (Bearing Gland)	8	Steel	P6010025	→	13
14	Plug (Bearing Gland)	2	Steel	P6010071	→	14
15A	Bearing Gland Gasket	2	Cardboard	P6011236	→	15A
15	Bearing Gland B (Outboard)	1	Cast Iron	P6011219	→	15
16	Locknut (Bearing)	1	Steel	P6011226	→	16
17	Lockwasher (Bearing)	1	Steel	P6011227	→	17
18	Deep Groove Ball Bearing	2	Steel	P6011235	→	18
19	Jacking Screw (BH)	4	Steel	P6011225	→	19
20	Screw (BH top)	2	Steel	P6010010	→	20
21	Grease Cup	2	Brass	P6010235	→	21
22	Bearing Housing	2	Cast Iron	P6011242	→	22
23	Bolt (Bearing Housing)	8	Steel	P6010008	→	23
24	Washer (Bearing Housing)	8	Steel	P6010027	→	24
25	Screw (Vibration sensor)	6	Steel	P6010067	→	25
25A	Screw (Temperature sensor)	4	Steel	P6010066	→	25A
26	Lip Seal	2	NBR	P6011234	→	26
27	Shoulder Ring	1	Steel	P6011228	→	27
28	Seal Gland	2	Cast Iron	P6011240	→	28
29	Bolt (Seal Gland)	8	Steel	P6010009	→	29
30	Washer (Seal Gland)	8	Steel	P6010025	→	30
31	O-Ring (Seal Gland)	2	FKM	P6011233	→	31
32	O-Ring (Stuffing Box)	4	FKM	P6011229	→	32
33	Stuffing Box	2	Cast Iron	P6011069	→	33
34	Pin (Seal Body)	2	Steel	P6010036	→	34
35	Mechanical Seal*	2				35
36	Shoulder Ring (MS)	1	SS 304	P6011230	→	36
37	Circlip (Snap Ring)	1	Steel	P6011231	→	37
38	Casing Wear Ring	2	Bronze	P6010184	→	38
39	Pin (CWR)	2	Steel	P6010036	→	39
42	Impeller*	1				42
43	Shaft*	1				43
44	Impeller Key	1	Steel	P6011232	→	44
45	Coupling Key	1	Steel	P6011237	→	45
46	Bearing Gland A (Inboard)	1	Cast Iron	P6011221	→	46
47	Plug 1/2" (Lower Casing)	10	Steel	P6010069	→	47
48	Casing*	1				48

*Denotes catalog item with multiple material configurations. Refer to item-specific replacement part table
"→" Denotes identical part number

CAT. NO.	PART DESCRIPTION	QTY.	MATL.	e-HSC 14X14X12	e-HSC 14X14X11	CAT. NO.
1	Large Casing Bolt	4	Steel	P6010257	→	1
2	Large Casing Washer	4	Steel	P6010026	→	2
4	Paper Pad (Inlet)	1	Cardboard	P6011341	→	4
5	Paper Pad (Outlet)	1	Cardboard	P6011342	→	5
6	Casing Washer	21	Steel	P6010026	→	6
7	Casing Bolt	21	Steel	P6010019	→	7
8	Tapered Pin Nut	2	Steel	P6010013	→	8
9	Tapered Pin	2	Steel	P6010222	→	9
10	Plug 1/2" (Upper Casing)	1	Steel	P6010069	→	10
11	Jacking Screw	2	Steel	P6010003	→	11
12	Bolts (Bearing Gland)	8	Steel	P6010240	→	12
13	Washer (Bearing Gland)	8	Steel	P6010239	→	13
14	Plug (Bearing Gland)	2	Steel	P6010066	→	14
15A	Bearing Gland Gasket	2	Cardboard	P6010253	→	15A
15	Bearing Gland B (Outboard)	1	Cast Iron	P6010267	→	15
16	Locknut (Bearing)	1	Steel	P6010237	→	16
17	Lockwasher (Bearing)	1	Steel	P6010238	→	17
18	Deep Groove Ball Bearing	2	Steel	P6010252	→	18
19	Jacking Screw (BH)	4	Steel	P6010236	→	19
20	Screw (BH top)	2	Steel	P6010010	→	20
21	Grease Cup	2	Brass	P6010235	→	21
22	Bearing Housing	2	Cast Iron	P6010367	→	22
23	Bolt (Bearing Housing)	8	Steel	P6010009	→	23
24	Washer (Bearing Housing)	8	Steel	P6010025	→	24
25	Screw (Vibration sensor)	6	Steel	P6010067	→	25
25A	Screw (Temperature sensor)	4	Steel	P6010066	→	25A
26	Lip Seal	2	NBR	P6010251	→	26
27	Shoulder Ring	1	Steel	P6010241	→	27
28	Seal Gland	2	Cast Iron	P6010365	→	28
29	Bolt (Seal Gland)	8	Steel	P6010240	→	29
30	Washer (Seal Gland)	8	Steel	P6010239	→	30
31	O-Ring (Seal Gland)	2	FKM	P6010244	→	31
32	O-Ring (Stuffing Box)	4	FKM	P6010243	→	32
33	Stuffing Box	2	Cast Iron	P6010270	→	33
34	Pin (Seal Body)	2	Steel	P6010226	→	34
35	Mechanical Seal*	2				35
36	Shoulder Ring (MS)	1	SS 304	P6010242	→	36
37	Circlip (Snap Ring)	1	Steel	P6010245	→	37
38	Casing Wear Ring	2	Bronze	P6010166	→	38
39	Pin (CWR)	2	Steel	P6010036	→	39
42	Impeller*	1				42
43	Shaft*	1				43
44	Impeller Key	1	Steel	P6011326	→	44
45	Coupling Key	1	Steel	P6010247	→	45
46	Bearing Gland A (Inboard)	1	Cast Iron	P6010369	→	46
47	Plug 1/2" (Lower Casing)	10	Steel	P6010069	→	47
48	Casing*	1				48

*Denotes catalog item with multiple material configurations. Refer to item-specific replacement part table
"→" Denotes identical part number

CAT. NO.	PART DESCRIPTION	QTY.	MATL.	e-HSC 14X16X15	e-HSC 14X16X14.5	CAT. NO.
1	Large Casing Bolt	4	Steel	P6010020	→	1
2	Large Casing Washer	4	Steel	P6010026	→	2
4	Paper Pad (Inlet)	1	Cardboard	P6010149	→	4
5	Paper Pad (Outlet)	1	Cardboard	P6011000	→	5
6	Casing Washer	24	Steel	P6010026	→	6
7	Casing Bolt	24	Steel	P6010019	→	7
8	Tapered Pin Nut	2	Steel	P6010013	→	8
9	Tapered Pin	2	Steel	P6010222	→	9
10	Plug 1/2" (Upper Casing)	1	Steel	P6010069	→	10
11	Jacking Screw	2	Steel	P6010003	→	11
12	Bolts (Bearing Gland)	8	Steel	P6010007	→	12
13	Washer (Bearing Gland)	8	Steel	P6010025	→	13
14	Plug (Bearing Gland)	2	Steel	P6010071	→	14
15A	Bearing Gland Gasket	2	Cardboard	P6010906	→	15A
15	Bearing Gland B (Outboard)	1	Cast Iron	P6010893	→	15
16	Locknut (Bearing)	1	Steel	P6010894	→	16
17	Lockwasher (Bearing)	1	Steel	P6010895	→	17
18	Deep Groove Ball Bearing	2	Steel	P6010879	→	18
19	Jacking Screw (BH)	4	Steel	P6010001	→	19
20	Screw (BH top)	2	Steel	P6010010	→	20
21	Grease Cup	2	Brass	P6010235	→	21
22	Bearing Housing	2	Cast Iron	P6010889	→	22
23	Bolt (Bearing Housing)	8	Steel	P6010008	→	23
24	Washer (Bearing Housing)	8	Steel	P6010027	→	24
25	Screw (Vibration sensor)	6	Steel	P6010067	→	25
25A	Screw (Temperature sensor)	4	Steel	P6010066	→	25A
26	Lip Seal	2	NBR	P6010904	→	26
27	Shoulder Ring	1	Steel	P6010896	→	27
28	Seal Gland	2	Cast Iron	P6010887	→	28
29	Bolt (Seal Gland)	8	Steel	P6010007	→	29
30	Washer (Seal Gland)	8	Steel	P6010025	→	30
31	O-Ring (Seal Gland)	2	FKM	P6010902	→	31
32	O-Ring (Stuffing Box)	4	FKM	P6010897	→	32
33	Stuffing Box	2	Cast Iron	P6010886	→	33
34	Pin (Seal Body)	2	Steel	P6010036	→	34
35	Mechanical Seal*	2				35
36	Shoulder Ring (MS)	1	SS 304	P6010899	→	36
37	Circlip (Snap Ring)	1	Steel	P6010900	→	37
38	Casing Wear Ring	2	Bronze	P6010150	→	38
39	Pin (CWR)	2	Steel	P6010036	→	39
42	Impeller*	1				42
43	Shaft*	1				43
44	Impeller Key	1	Steel	P6010901	→	44
45	Coupling Key	1	Steel	P6010905	→	45
46	Bearing Gland A (Inboard)	1	Cast Iron	P6010891	→	46
47	Plug 1/2" (Lower Casing)	10	Steel	P6010069	→	47
48	Casing*	1				48

*Denotes catalog item with multiple material configurations. Refer to item-specific replacement part table
"→" Denotes identical part number

CAT. NO.	PART DESCRIPTION	QTY.	MATL.	e-HSC 14X16X27.5	e-HSC 14X16X26	CAT. NO.
1	Large Casing Bolt	4	Steel	P6011364	→	1
2	Large Casing Washer	4	Steel	P6010028	→	2
4	Paper Pad (Inlet)	1	Cardboard	P6011349	→	4
5	Paper Pad (Outlet)	1	Cardboard	P6011350	→	5
6	Casing Washer	21	Steel	P6010028	→	6
7	Casing Bolt	21	Steel	P6011363	→	7
8	Tapered Pin Nut	2	Steel	P6010013	→	8
9	Tapered Pin	2	Steel	P6011239	→	9
10	Plug 1/2" (Upper Casing)	1	Steel	P6010069	→	10
11	Jacking Screw	2	Steel	P6011336	→	11
12	Bolts (Bearing Gland)	8	Steel	P6010007	→	12
13	Washer (Bearing Gland)	8	Steel	P6010025	→	13
14	Plug (Bearing Gland)	2	Steel	P6010071	→	14
15A	Bearing Gland Gasket	2	Cardboard	P6011339	→	15A
15	Bearing Gland B (Outboard)	1	Cast Iron	P6011366	→	15
16	Locknut (Bearing)	1	Steel	P6011328	→	16
17	Lockwasher (Bearing)	1	Steel	P6011329	→	17
18	Deep Groove Ball Bearing	2	Steel	P6011338	→	18
19	Jacking Screw (BH)	4	Steel	P6010001	→	19
20	Screw (BH top)	2	Steel	P6010010	→	20
21	Grease Cup	2	Brass	P6010235	→	21
22	Bearing Housing	2	Cast Iron	P6011370	→	22
23	Bolt (Bearing Housing)	8	Steel	P6010008	→	23
24	Washer (Bearing Housing)	8	Steel	P6010027	→	24
25	Screw (Vibration sensor)	6	Steel	P6010067	→	25
25A	Screw (Temperature sensor)	4	Steel	P6010066	→	25A
26	Lip Seal	2	NBR	P6011335	→	26
27	Shoulder Ring	1	Steel	P6011330	→	27
28	Seal Gland	2	Cast Iron	P6011371	→	28
29	Bolt (Seal Gland)	8	Steel	P6010009	→	29
30	Washer (Seal Gland)	8	Steel	P6010025	→	30
31	O-Ring (Seal Gland)	2	FKM	P6011334	→	31
32	O-Ring (Stuffing Box)	4	FKM	P6011331	→	32
33	Stuffing Box	2	Cast Iron	P6011362	→	33
34	Pin (Seal Body)	2	Steel	P6010036	→	34
35	Mechanical Seal*	2				35
36	Shoulder Ring (MS)	1	SS 304	P6011332	→	36
37	Circlip (Snap Ring)	1	Steel	P6011333	→	37
38	Casing Wear Ring	2	Bronze	P6011207	→	38
39	Pin (CWR)	2	Steel	P6010036	→	39
42	Impeller*	1				42
43	Shaft*	1				43
44	Impeller Key	1	Steel	P6011337	→	44
45	Coupling Key	1	Steel	P6011232	→	45
46	Bearing Gland A (Inboard)	1	Cast Iron	P6011368	→	46
47	Plug 1/2" (Lower Casing)	10	Steel	P6010069	→	47
48	Casing*	1				48

*Denotes catalog item with multiple material configurations. Refer to item-specific replacement part table
"→" Denotes identical part number

CAT. NO.	PART DESCRIPTION	QTY.	MATL.	e-HSC 14X18X18	e-HSC 14X18X17	CAT. NO.
1	Large Casing Bolt	4	Steel	P6010024	→	1
2	Large Casing Washer	4	Steel	P6010029	→	2
4	Paper Pad (Inlet)	1	Cardboard	P6011196	→	4
5	Paper Pad (Outlet)	1	Cardboard	P6011197	→	5
6	Casing Washer	26	Steel	P6010029	→	6
7	Casing Bolt	26	Steel	P6010023	→	7
8	Tapered Pin Nut	2	Steel	P6010013	→	8
9	Tapered Pin	2	Steel	P6010031	→	9
10	Plug 1/2" (Upper Casing)	1	Steel	P6010069	→	10
11	Jacking Screw	2	Steel	P6010004	→	11
12	Bolts (Bearing Gland)	8	Steel	P6010007	→	12
13	Washer (Bearing Gland)	8	Steel	P6010025	→	13
14	Plug (Bearing Gland)	2	Steel	P6010071	→	14
15A	Bearing Gland Gasket	2	Cardboard	P6010204	→	15A
15	Bearing Gland B (Outboard)	1	Cast Iron	P6010192	→	15
16	Locknut (Bearing)	1	Steel	P6010042	→	16
17	Lockwasher (Bearing)	1	Steel	P6010035	→	17
18	Deep Groove Ball Bearing	2	Steel	P6010203	→	18
19	Jacking Screw (BH)	4	Steel	P6010001	→	19
20	Screw (BH top)	2	Steel	P6010010	→	20
21	Grease Cup	2	Brass	P6010235	→	21
22	Bearing Housing	2	Cast Iron	P6010202	→	22
23	Bolt (Bearing Housing)	8	Steel	P6010008	→	23
24	Washer (Bearing Housing)	8	Steel	P6010027	→	24
25	Screw (Vibration sensor)	6	Steel	P6010067	→	25
25A	Screw (Temperature sensor)	4	Steel	P6010066	→	25A
26	Lip Seal	2	NBR	P6010063	→	26
27	Shoulder Ring	1	Steel	P6010048	→	27
28	Seal Gland	2	Cast Iron	P6010200	→	28
29	Bolt (Seal Gland)	8	Steel	P6010009	→	29
30	Washer (Seal Gland)	8	Steel	P6010025	→	30
31	O-Ring (Seal Gland)	2	FKM	P6010060	→	31
32	O-Ring (Stuffing Box)	4	FKM	P6010059	→	32
33	Stuffing Box	2	Cast Iron	P6010193	→	33
34	Pin (Seal Body)	2	Steel	P6010036	→	34
35	Mechanical Seal*	2				35
36	Shoulder Ring (MS)	1	SS 304	P6010049	→	36
37	Circlip (Snap Ring)	1	Steel	P6010039	→	37
38	Casing Wear Ring	2	Bronze	P6011207	→	38
39	Pin (CWR)	2	Steel	P6010036	→	39
42	Impeller*	1				42
43	Shaft*	1				43
44	Impeller Key	1	Steel	P6010078	→	44
45	Coupling Key	1	Steel	P6010079	→	45
46	Bearing Gland A (Inboard)	1	Cast Iron	P6010206	→	46
47	Plug 1/2" (Lower Casing)	10	Steel	P6010069	→	47
48	Casing*	1				48

*Denotes catalog item with multiple material configurations. Refer to item-specific replacement part table
"→" Denotes identical part number

CAT. NO.	PART DESCRIPTION	QTY.	MATL.	e-HSC 14X18X21	e-HSC 14X18X20	CAT. NO.
1	Large Casing Bolt	4	Steel	P6010024	→	1
2	Large Casing Washer	4	Steel	P6010029	→	2
4	Paper Pad (Inlet)	1	Cardboard	P6011198	→	4
5	Paper Pad (Outlet)	1	Cardboard	P6011199	→	5
6	Casing Washer	19	Steel	P6010029	→	6
7	Casing Bolt	19	Steel	P6010023	→	7
8	Tapered Pin Nut	2	Steel	P6010013	→	8
9	Tapered Pin	2	Steel	P6010031	→	9
10	Plug 1/2" (Upper Casing)	1	Steel	P6010069	→	10
11	Jacking Screw	2	Steel	P6010004	→	11
12	Bolts (Bearing Gland)	8	Steel	P6010007	→	12
13	Washer (Bearing Gland)	8	Steel	P6010025	→	13
14	Plug (Bearing Gland)	2	Steel	P6010071	→	14
15A	Bearing Gland Gasket	2	Cardboard	P6010204	→	15A
15	Bearing Gland B (Outboard)	1	Cast Iron	P6010192	→	15
16	Locknut (Bearing)	1	Steel	P6010042	→	16
17	Lockwasher (Bearing)	1	Steel	P6010035	→	17
18	Deep Groove Ball Bearing	2	Steel	P6010203	→	18
19	Jacking Screw (BH)	4	Steel	P6010001	→	19
20	Screw (BH top)	2	Steel	P6010010	→	20
21	Grease Cup	2	Brass	P6010235	→	21
22	Bearing Housing	2	Cast Iron	P6010202	→	22
23	Bolt (Bearing Housing)	8	Steel	P6010008	→	23
24	Washer (Bearing Housing)	8	Steel	P6010027	→	24
25	Screw (Vibration sensor)	6	Steel	P6010067	→	25
25A	Screw (Temperature sensor)	4	Steel	P6010066	→	25A
26	Lip Seal	2	NBR	P6010063	→	26
27	Shoulder Ring	1	Steel	P6010048	→	27
28	Seal Gland	2	Cast Iron	P6010200	→	28
29	Bolt (Seal Gland)	8	Steel	P6010009	→	29
30	Washer (Seal Gland)	8	Steel	P6010025	→	30
31	O-Ring (Seal Gland)	2	FKM	P6010060	→	31
32	O-Ring (Stuffing Box)	4	FKM	P6010059	→	32
33	Stuffing Box	2	Cast Iron	P6010193	→	33
34	Pin (Seal Body)	2	Steel	P6010036	→	34
35	Mechanical Seal*	2				35
36	Shoulder Ring (MS)	1	SS 304	P6010049	→	36
37	Circlip (Snap Ring)	1	Steel	P6010039	→	37
38	Casing Wear Ring	2	Bronze	P6011208	→	38
39	Pin (CWR)	2	Steel	P6010036	→	39
42	Impeller*	1				42
43	Shaft*	1				43
44	Impeller Key	1	Steel	P6010078	→	44
45	Coupling Key	1	Steel	P6010079	→	45
46	Bearing Gland A (Inboard)	1	Cast Iron	P6010206	→	46
47	Plug 1/2" (Lower Casing)	10	Steel	P6010069	→	47
48	Casing*	1				48

*Denotes catalog item with multiple material configurations. Refer to item-specific replacement part table
"→" Denotes identical part number

CAT. NO.	PART DESCRIPTION	QTY.	MATL.	e-HSC 16X16X13.5	e-HSC 16X16X13	CAT. NO.
1	Large Casing Bolt	4	Steel	P6011012	→	1
2	Large Casing Washer	4	Steel	P6010029	→	2
4	Paper Pad (Inlet)	1	Cardboard	P6011343	→	4
5	Paper Pad (Outlet)	1	Cardboard	P6011344	→	5
6	Casing Washer	23	Steel	P6010029	→	6
7	Casing Bolt	23	Steel	P6010023	→	7
8	Tapered Pin Nut	2	Steel	P6010013	→	8
9	Tapered Pin	2	Steel	P6010031	→	9
10	Plug 1/2" (Upper Casing)	1	Steel	P6010069	→	10
11	Jacking Screw	2	Steel	P6010004	→	11
12	Bolts (Bearing Gland)	8	Steel	P6010007	→	12
13	Washer (Bearing Gland)	8	Steel	P6010025	→	13
14	Plug (Bearing Gland)	2	Steel	P6010071	→	14
15A	Bearing Gland Gasket	2	Cardboard	P6010103	→	15A
15	Bearing Gland B (Outboard)	1	Cast Iron	P6010087	→	15
16	Locknut (Bearing)	1	Steel	P6010040	→	16
17	Lockwasher (Bearing)	1	Steel	P6010033	→	17
18	Deep Groove Ball Bearing	2	Steel	P6010102	→	18
19	Jacking Screw (BH)	4	Steel	P6010001	→	19
20	Screw (BH top)	2	Steel	P6010010	→	20
21	Grease Cup	2	Brass	P6010235	→	21
22	Bearing Housing	2	Cast Iron	P6010101	→	22
23	Bolt (Bearing Housing)	8	Steel	P6010008	→	23
24	Washer (Bearing Housing)	8	Steel	P6010027	→	24
25	Screw (Vibration sensor)	6	Steel	P6010067	→	25
25A	Screw (Temperature sensor)	4	Steel	P6010066	→	25A
26	Lip Seal	2	NBR	P6010061	→	26
27	Shoulder Ring	1	Steel	P6010043	→	27
28	Seal Gland	2	Cast Iron	P6010099	→	28
29	Bolt (Seal Gland)	8	Steel	P6010007	→	29
30	Washer (Seal Gland)	8	Steel	P6010025	→	30
31	O-Ring (Seal Gland)	2	FKM	P6010056	→	31
32	O-Ring (Stuffing Box)	4	FKM	P6010220	→	32
33	Stuffing Box	2	Cast Iron	P6011361	→	33
34	Pin (Seal Body)	2	Steel	P6010036	→	34
35	Mechanical Seal*	2				35
36	Shoulder Ring (MS)	1	SS 304	P6010047	→	36
37	Circlip (Snap Ring)	1	Steel	P6010037	→	37
38	Casing Wear Ring	2	Bronze	P6011206	→	38
39	Pin (CWR)	2	Steel	P6010036	→	39
42	Impeller*	1				42
43	Shaft*	1				43
44	Impeller Key	1	Steel	P6011327	→	44
45	Coupling Key	1	Steel	P6010075	→	45
46	Bearing Gland A (Inboard)	1	Cast Iron	P6010105	→	46
47	Plug 1/2" (Lower Casing)	10	Steel	P6010069	→	47
48	Casing*	1				48

*Denotes catalog item with multiple material configurations. Refer to item-specific replacement part table
"→" Denotes identical part number

CAT. NO.	PART DESCRIPTION	QTY.	MATL.	e-HSC 16X20X20.5	e-HSC 16X20X19.5	CAT. NO.
1	Large Casing Bolt	4	Steel	P6010022	→	1
2	Large Casing Washer	4	Steel	P6010028	→	2
4	Paper Pad (Inlet)	1	Cardboard	P6011204	→	4
5	Paper Pad (Outlet)	1	Cardboard	P6011205	→	5
6	Casing Washer	18	Steel	P6010028	→	6
7	Casing Bolt	18	Steel	P6010021	→	7
8	Tapered Pin Nut	2	Steel	P6010013	→	8
9	Tapered Pin	2	Steel	P6011325	→	9
10	Plug 1/2" (Upper Casing)	1	Steel	P6010069	→	10
11	Jacking Screw	2	Steel	P6011224	→	11
12	Bolts (Bearing Gland)	8	Steel	P6010007	→	12
13	Washer (Bearing Gland)	8	Steel	P6010025	→	13
14	Plug (Bearing Gland)	2	Steel	P6010071	→	14
15A	Bearing Gland Gasket	2	Cardboard	P6011236	→	15A
15	Bearing Gland B (Outboard)	1	Cast Iron	P6011219	→	15
16	Locknut (Bearing)	1	Steel	P6011226	→	16
17	Lockwasher (Bearing)	1	Steel	P6011227	→	17
18	Deep Groove Ball Bearing	2	Steel	P6011235	→	18
19	Jacking Screw (BH)	4	Steel	P6010001	→	19
20	Screw (BH top)	2	Steel	P6010010	→	20
21	Grease Cup	2	Brass	P6010235	→	21
22	Bearing Housing	2	Cast Iron	P6011242	→	22
23	Bolt (Bearing Housing)	8	Steel	P6010008	→	23
24	Washer (Bearing Housing)	8	Steel	P6010027	→	24
25	Screw (Vibration sensor)	6	Steel	P6010067	→	25
25A	Screw (Temperature sensor)	4	Steel	P6010066	→	25A
26	Lip Seal	2	NBR	P6011234	→	26
27	Shoulder Ring	1	Steel	P6011228	→	27
28	Seal Gland	2	Cast Iron	P6011240	→	28
29	Bolt (Seal Gland)	8	Steel	P6010009	→	29
30	Washer (Seal Gland)	8	Steel	P6010025	→	30
31	O-Ring (Seal Gland)	2	FKM	P6011233	→	31
32	O-Ring (Stuffing Box)	4	FKM	P6011229	→	32
33	Stuffing Box	2	Cast Iron	P6011069	→	33
34	Pin (Seal Body)	2	Steel	P6010036	→	34
35	Mechanical Seal*	2				35
36	Shoulder Ring (MS)	1	SS 304	P6011230	→	36
37	Circlip (Snap Ring)	1	Steel	P6011231	→	37
38	Casing Wear Ring	2	Bronze	P6011208	→	38
39	Pin (CWR)	2	Steel	P6010036	→	39
42	Impeller*	1				42
43	Shaft*	1				43
44	Impeller Key	1	Steel	P6011232	→	44
45	Coupling Key	1	Steel	P6011237	→	45
46	Bearing Gland A (Inboard)	1	Cast Iron	P6011221	→	46
47	Plug 1/2" (Lower Casing)	10	Steel	P6010069	→	47
48	Casing*	1				48

*Denotes catalog item with multiple material configurations. Refer to item-specific replacement part table
"→" Denotes identical part number

CAT. NO.	PART DESCRIPTION	QTY.	MATL.	e-HSC 16X20X23	e-HSC 16X20X22	CAT. NO.
1	Large Casing Bolt	4	Steel	P6011364	→	1
2	Large Casing Washer	4	Steel	P6010028	→	2
4	Paper Pad (Inlet)	1	Cardboard	P6011351	→	4
5	Paper Pad (Outlet)	1	Cardboard	P6011352	→	5
6	Casing Washer	18	Steel	P6010028	→	6
7	Casing Bolt	18	Steel	P6010021	→	7
8	Tapered Pin Nut	2	Steel	P6010013	→	8
9	Tapered Pin	2	Steel	P6011239	→	9
10	Plug 1/2" (Upper Casing)	1	Steel	P6010069	→	10
11	Jacking Screw	2	Steel	P6011224	→	11
12	Bolts (Bearing Gland)	8	Steel	P6010007	→	12
13	Washer (Bearing Gland)	8	Steel	P6010025	→	13
14	Plug (Bearing Gland)	2	Steel	P6010071	→	14
15A	Bearing Gland Gasket	2	Cardboard	P6011339	→	15A
15	Bearing Gland B (Outboard)	1	Cast Iron	P6011366	→	15
16	Locknut (Bearing)	1	Steel	P6011328	→	16
17	Lockwasher (Bearing)	1	Steel	P6011329	→	17
18	Deep Groove Ball Bearing	2	Steel	P6011338	→	18
19	Jacking Screw (BH)	4	Steel	P6010001	→	19
20	Screw (BH top)	2	Steel	P6010010	→	20
21	Grease Cup	2	Brass	P6010235	→	21
22	Bearing Housing	2	Cast Iron	P6011370	→	22
23	Bolt (Bearing Housing)	8	Steel	P6010008	→	23
24	Washer (Bearing Housing)	8	Steel	P6010027	→	24
25	Screw (Vibration sensor)	6	Steel	P6010067	→	25
25A	Screw (Temperature sensor)	4	Steel	P6010066	→	25A
26	Lip Seal	2	NBR	P6011335	→	26
27	Shoulder Ring	1	Steel	P6011330	→	27
28	Seal Gland	2	Cast Iron	P6011371	→	28
29	Bolt (Seal Gland)	8	Steel	P6010009	→	29
30	Washer (Seal Gland)	8	Steel	P6010025	→	30
31	O-Ring (Seal Gland)	2	FKM	P6011334	→	31
32	O-Ring (Stuffing Box)	4	FKM	P6011331	→	32
33	Stuffing Box	2	Cast Iron	P6011362	→	33
34	Pin (Seal Body)	2	Steel	P6010036	→	34
35	Mechanical Seal*	2				35
36	Shoulder Ring (MS)	1	SS 304	P6011332	→	36
37	Circlip (Snap Ring)	1	Steel	P6011333	→	37
38	Casing Wear Ring	2	Bronze	P6011473	→	38
39	Pin (CWR)	2	Steel	P6010036	→	39
42	Impeller*	1				42
43	Shaft*	1				43
44	Impeller Key	1	Steel	P6011337	→	44
45	Coupling Key	1	Steel	P6011232	→	45
46	Bearing Gland A (Inboard)	1	Cast Iron	P6011368	→	46
47	Plug 1/2" (Lower Casing)	10	Steel	P6010069	→	47
48	Casing*	1				48

*Denotes catalog item with multiple material configurations. Refer to item-specific replacement part table
"→" Denotes identical part number

CAT. NO.	PART DESCRIPTION	QTY.	MATL.	e-HSC 18X20X15.5	e-HSC 18X20X14.5	CAT. NO.
1	Large Casing Bolt	4	Steel	P6011012	→	1
2	Large Casing Washer	4	Steel	P6010029	→	2
4	Paper Pad (Inlet)	1	Cardboard	P6010084	→	4
5	Paper Pad (Outlet)	1	Cardboard	P6011003	→	5
6	Casing Washer	23	Steel	P6010029	→	6
7	Casing Bolt	23	Steel	P6010023	→	7
8	Tapered Pin Nut	2	Steel	P6010013	→	8
9	Tapered Pin	2	Steel	P6010031	→	9
10	Plug 1/2" (Upper Casing)	1	Steel	P6010069	→	10
11	Jacking Screw	2	Steel	P6010004	→	11
12	Bolts (Bearing Gland)	8	Steel	P6010007	→	12
13	Washer (Bearing Gland)	8	Steel	P6010025	→	13
14	Plug (Bearing Gland)	2	Steel	P6010071	→	14
15A	Bearing Gland Gasket	2	Cardboard	P6010146	→	15A
15	Bearing Gland B (Outboard)	1	Cast Iron	P6010130	→	15
16	Locknut (Bearing)	1	Steel	P6010041	→	16
17	Lockwasher (Bearing)	1	Steel	P6010034	→	17
18	Deep Groove Ball Bearing	2	Steel	P6010145	→	18
19	Jacking Screw (BH)	4	Steel	P6010001	→	19
20	Screw (BH top)	2	Steel	P6010010	→	20
21	Grease Cup	2	Brass	P6010235	→	21
22	Bearing Housing	2	Cast Iron	P6010144	→	22
23	Bolt (Bearing Housing)	8	Steel	P6010008	→	23
24	Washer (Bearing Housing)	8	Steel	P6010027	→	24
25	Screw (Vibration sensor)	6	Steel	P6010067	→	25
25A	Screw (Temperature sensor)	4	Steel	P6010066	→	25A
26	Lip Seal	2	NBR	P6010062	→	26
27	Shoulder Ring	1	Steel	P6010045	→	27
28	Seal Gland	2	Cast Iron	P6010142	→	28
29	Bolt (Seal Gland)	8	Steel	P6010007	→	29
30	Washer (Seal Gland)	8	Steel	P6010025	→	30
31	O-Ring (Seal Gland)	2	FKM	P6010058	→	31
32	O-Ring (Stuffing Box)	4	FKM	P6010057	→	32
33	Stuffing Box	2	Cast Iron	P6010173	→	33
34	Pin (Seal Body)	2	Steel	P6010036	→	34
35	Mechanical Seal*	2				35
36	Shoulder Ring (MS)	1	SS 304	P6010046	→	36
37	Circlip (Snap Ring)	1	Steel	P6010038	→	37
38	Casing Wear Ring	2	Bronze	P6010184	→	38
39	Pin (CWR)	2	Steel	P6010036	→	39
42	Impeller*	1				42
43	Shaft*	1				43
44	Impeller Key	1	Steel	P6010224	→	44
45	Coupling Key	1	Steel	P6010074	→	45
46	Bearing Gland A (Inboard)	1	Cast Iron	P6010148	→	46
47	Plug 1/2" (Lower Casing)	10	Steel	P6010069	→	47
48	Casing*	1				48

*Denotes catalog item with multiple material configurations. Refer to item-specific replacement part table
 "→" Denotes identical part number

CAT. NO.	PART DESCRIPTION	QTY.	MATL.	e-HSC 20X24X18	e-HSC 20X24X17	CAT. NO.
1	Large Casing Bolt	4	Steel	P6010022	→	1
2	Large Casing Washer	4	Steel	P6010028	→	2
4	Paper Pad (Inlet)	1	Cardboard	P6011200	→	4
5	Paper Pad (Outlet)	1	Cardboard	P6011201	→	5
6	Casing Washer	21	Steel	P6010028	→	6
7	Casing Bolt	21	Steel	P6010021	→	7
8	Tapered Pin Nut	2	Steel	P6010013	→	8
9	Tapered Pin	2	Steel	P6011239	→	9
10	Plug 1/2" (Upper Casing)	1	Steel	P6010069	→	10
11	Jacking Screw	2	Steel	P6011224	→	11
12	Bolts (Bearing Gland)	8	Steel	P6010007	→	12
13	Washer (Bearing Gland)	8	Steel	P6010025	→	13
14	Plug (Bearing Gland)	2	Steel	P6010071	→	14
15A	Bearing Gland Gasket	2	Cardboard	P6010204	→	15A
15	Bearing Gland B (Outboard)	1	Cast Iron	P6010192	→	15
16	Locknut (Bearing)	1	Steel	P6010042	→	16
17	Lockwasher (Bearing)	1	Steel	P6010035	→	17
18	Deep Groove Ball Bearing	2	Steel	P6010203	→	18
19	Jacking Screw (BH)	4	Steel	P6010001	→	19
20	Screw (BH top)	2	Steel	P6010010	→	20
21	Grease Cup	2	Brass	P6010235	→	21
22	Bearing Housing	2	Cast Iron	P6010202	→	22
23	Bolt (Bearing Housing)	8	Steel	P6010008	→	23
24	Washer (Bearing Housing)	8	Steel	P6010027	→	24
25	Screw (Vibration sensor)	6	Steel	P6010067	→	25
25A	Screw (Temperature sensor)	4	Steel	P6010066	→	25A
26	Lip Seal	2	NBR	P6010063	→	26
27	Shoulder Ring	1	Steel	P6010048	→	27
28	Seal Gland	2	Cast Iron	P6010200	→	28
29	Bolt (Seal Gland)	8	Steel	P6010009	→	29
30	Washer (Seal Gland)	8	Steel	P6010025	→	30
31	O-Ring (Seal Gland)	2	FKM	P6010060	→	31
32	O-Ring (Stuffing Box)	4	FKM	P6010059	→	32
33	Stuffing Box	2	Cast Iron	P6011068	→	33
34	Pin (Seal Body)	2	Steel	P6010036	→	34
35	Mechanical Seal*	2				35
36	Shoulder Ring (MS)	1	SS 304	P6010049	→	36
37	Circlip (Snap Ring)	1	Steel	P6010039	→	37
38	Casing Wear Ring	2	Bronze	P6011209	→	38
39	Pin (CWR)	2	Steel	P6010036	→	39
42	Impeller*	1				42
43	Shaft*	1				43
44	Impeller Key	1	Steel	P6011222	→	44
45	Coupling Key	1	Steel	P6010079	→	45
46	Bearing Gland A (Inboard)	1	Cast Iron	P6010206	→	46
47	Plug 1/2" (Lower Casing)	10	Steel	P6010069	→	47
48	Casing*	1				48

*Denotes catalog item with multiple material configurations. Refer to item-specific replacement part table
"→" Denotes identical part number

e-HSC Pump

Casing Parts Listings

Casing Part Listings by Pump Model

CAT. NO.	MODEL	Cast Iron	Ductile Iron	MODEL	Cast Iron	Ductile Iron	
48	e-HSC 2.5X4X10.5	P6013488	P6013489	e-HSC 8X10X21	N/A	P6012749	
	e-HSC 2.5X4X10			e-HSC 8X10X20			
	e-HSC 3X4X12.5	P6013444	P6013445	e-HSC 8X10X26	N/A	P6013469	
	e-HSC 3X4X12			e-HSC 8X10X25			
	e-HSC 3X5X8.5	P6012732	P6012733	e-HSC 10X10X8	P6013476	P6013477	
	e-HSC 3X5X8			e-HSC 10X10X7.5			
	e-HSC 3X5X11	P6011053	P6011054	e-HSC 10X12X15.5	P6011019	P6011020	
	e-HSC 3X5X10.5			e-HSC 10X12X14.5			
	e-HSC 3X5X13.5	P6013448	P6013449	e-HSC 10X12X19	P6011548	P6011549	
	e-HSC 3X5X13			e-HSC 10X12X18			
	e-HSC 4X6X10	P6012736	P6012737	e-HSC 10X12X24	N/A	P6011294	
	e-HSC 4X6X9.5			e-HSC 10X12X23			
	e-HSC 4X6X13	P6011033	P6011034	e-HSC 12X12X9	P6013472	P6013473	
	e-HSC 4X6X12			e-HSC 12X12X8.5			
	e-HSC 4X6X16	P6013452	P6013453	e-HSC 12X12X10	P6011061	P6011062	
	e-HSC 4X6X15.5			e-HSC 12X12X9.5			
	e-HSC 5X6X9	P6011057	P6011058	e-HSC 12X14X13	P6011023	P6011024	
	e-HSC 5X6X8.5			e-HSC 12X14X12.5			
	e-HSC 5X8X9.5	P6011037	P6011038	e-HSC 12X16X18	P6011552	P6011553	
	e-HSC 5X8X9			e-HSC 12X16X17			
	e-HSC 5X8X12	P6013456	P6013457	e-HSC 12X16X22	N/A	P6011026	
	e-HSC 5X8X11			e-HSC 12X16X21			
	e-HSC 5X8X15.5	P6012740	P6012741	e-HSC 12X16X28	N/A	P6011308	
	e-HSC 5X8X14.5			e-HSC 12X16X27			
	e-HSC 5X8X19	P6011041	P6011042	e-HSC 14X14X12	P6011540	P6011541	
	e-HSC 5X8X18			e-HSC 14X14X11			
	e-HSC 6X8X6.5	P6013484	P6013485	e-HSC 14X16X15	P6011029	P6011030	
	e-HSC 6X8X6			e-HSC 14X16X14.5			
	e-HSC 6X8X12	P6013462	P6013463	e-HSC 14X16X27.5	N/A	P6011555	
	e-HSC 6X8X11			e-HSC 14X16X26			
	e-HSC 6X8X14	P6011045	P6011046	e-HSC 14X18X18	P6011297	P6011298	
	e-HSC 6X8X13.5			e-HSC 14X18X17			
	e-HSC 6X8X18	P6012744	P6012745	e-HSC 14X18X21	P6011301	P6011302	
	e-HSC 6X8X17			e-HSC 14X18X20			
	e-HSC 6X8X22	N/A	P6012747	e-HSC 16X16X13.5	P6011544	P6011545	
	e-HSC 6X8X21			e-HSC 16X16X13			
	e-HSC 6X10X11	N/A	P6013459	e-HSC 16X20X20.5	P6011311	P6011312	
	e-HSC 6X10X10.5			e-HSC 16X20X19.5			
	e-HSC 8X8X8	P6013480	P6013481	e-HSC 16X20X23	N/A	P6011557	
	e-HSC 8X8X7.5			e-HSC 16X20X22			
	e-HSC 8X10X10	P6013466	P6013467	e-HSC 18X20X15.5	P6011065	P6011066	
	e-HSC 8X10X9.5			e-HSC 18X20X14.5			
	e-HSC 8X10X13.5	P6011049	P6011050	e-HSC 20X24X18	P6011305	P6011306	
	e-HSC 8X10X13			e-HSC 20X24X17			
	e-HSC 8X10X17	P6011015	P6011016	<i>Note: Casing halves not sold separately</i>			
	e-HSC 8X10X16						

e-HSC Pump

Shaft Parts Listings

Shaft Parts Listings by Pump Model

CAT. NO.	MODEL	SS 420	Duplex 2205	MODEL	SS 420	Duplex 2205
48	e-HSC 2.5X4X10.5	P6013507	P6013508	e-HSC 8X10X21	P6012648	P6012649
	e-HSC 2.5X4X10			e-HSC 8X10X20		
	e-HSC 3X4X12.5	P6010969	P6010970	e-HSC 8X10X26	P6013152	P6013153
	e-HSC 3X4X12			e-HSC 8X10X25		
	e-HSC 3X5X8.5	P6010969	P6010970	e-HSC 10X10X8	P6013511	P6013512
	e-HSC 3X5X8			e-HSC 10X10X7.5		
	e-HSC 3X5X11	P6010969	P6010970	e-HSC 10X12X15.5	P6010882	P6010883
	e-HSC 3X5X10.5			e-HSC 10X12X14.5		
	e-HSC 3X5X13.5	P6010969	P6010970	e-HSC 10X12X19	P6010141	P6010691
	e-HSC 3X5X13			e-HSC 10X12X18		
	e-HSC 4X6X10	P6010969	P6010970	e-HSC 10X12X24	P6011186	P6011187
	e-HSC 4X6X9.5			e-HSC 10X12X23		
	e-HSC 4X6X13	P6010361	P6010783	e-HSC 12X12X9	P6011353	P6011354
	e-HSC 4X6X12			e-HSC 12X12X8.5		
	e-HSC 4X6X16	P6010969	P6010970	e-HSC 12X12X10	P6010364	P6010786
	e-HSC 4X6X15.5			e-HSC 12X12X9.5		
	e-HSC 5X6X9	P6010969	P6010970	e-HSC 12X14X13	P6010882	P6010883
	e-HSC 5X6X8.5			e-HSC 12X14X12.5		
	e-HSC 5X8X9.5	P6010362	P6010784	e-HSC 12X16X18	P6010884	P6010885
	e-HSC 5X8X9			e-HSC 12X16X17		
	e-HSC 5X8X12	P6010362	P6010784	e-HSC 12X16X22	P6010199	P6010692
	e-HSC 5X8X11			e-HSC 12X16X21		
	e-HSC 5X8X15.5	P6010362	P6010784	e-HSC 12X16X28	P6011190	P6011191
	e-HSC 5X8X14.5			e-HSC 12X16X27		
	e-HSC 5X8X19	P6010362	P6010784	e-HSC 14X14X12	P6011353	P6011354
	e-HSC 5X8X18			e-HSC 14X14X11		
	e-HSC 6X8X6.5	P6010969	P6010970	e-HSC 14X16X15	P6010884	P6010885
	e-HSC 6X8X6			e-HSC 14X16X14.5		
	e-HSC 6X8X12	P6010363	P6010785	e-HSC 14X16X27.5	P6011357	P6011358
	e-HSC 6X8X11			e-HSC 14X16X26		
	e-HSC 6X8X14	P6010363	P6010785	e-HSC 14X18X18	P6010199	P6010692
	e-HSC 6X8X13.5			e-HSC 14X18X17		
	e-HSC 6X8X18	P6010880	P6010881	e-HSC 14X18X21	P6010199	P6010692
	e-HSC 6X8X17			e-HSC 14X18X20		
	e-HSC 6X8X22	P6012648	P6012649	e-HSC 16X16X13.5	P6011355	P6011356
	e-HSC 6X8X21			e-HSC 16X16X13		
	e-HSC 6X10X11	P6010880	P6010881	e-HSC 16X20X20.5	P6011192	P6011193
	e-HSC 6X10X10.5			e-HSC 16X20X19.5		
	e-HSC 8X8X8	P6013509	P6013510	e-HSC 16X20X23	P6011359	P6011360
	e-HSC 8X8X7.5			e-HSC 16X20X22		
	e-HSC 8X10X10	P6010363	P6010785	e-HSC 18X20X15.5	P6010183	P6010693
	e-HSC 8X10X9.5			e-HSC 18X20X14.5		
	e-HSC 8X10X13.5	P6010880	P6010881	e-HSC 20X24X18	P6011188	P6011189
	e-HSC 8X10X13			e-HSC 20X24X17		
	e-HSC 8X10X17	P6010098	P6010690			
	e-HSC 8X10X16					

e-HSC Pump
Impeller & Impeller Wear Ring Kit
Parts Listings

Impeller Parts Listings by Pump Model

CAT. NO.	MODEL	SS 304	SS 316	Bronze
42	e-HSC 2.5X4X10.5	P6013424	P6013425	P6013426
	e-HSC 2.5X4X10	P6013433	P6013434	P6013435
	e-HSC 3X4X12.5	P6012988	P6012989	P6012990
	e-HSC 3X4X12	P6012997	P6012998	P6012999
	e-HSC 3X5X8.5	P6012464	P6012465	P6012466
	e-HSC 3X5X8	P6012473	P6012474	P6012475
	e-HSC 3X5X11	P6010929	P6010930	P6012092
	e-HSC 3X5X10.5	P6010935	P6010936	P6012095
	e-HSC 3X5X13.5	P6013006	P6013007	P6013008
	e-HSC 3X5X13	P6013015	P6013016	P6013017
	e-HSC 4X6X10	P6012510	P6012511	P6012512
	e-HSC 4X6X9.5	P6012519	P6012520	P6012521
	e-HSC 4X6X13	P6010319	P6010792	P6012056
	e-HSC 4X6X12	P6010322	P6010795	P6012059
	e-HSC 4X6X16	P6013024	P6013025	P6013026
	e-HSC 4X6X15.5	P6013033	P6013034	P6013035
	e-HSC 5X6X9	P6010949	P6010950	P6012098
	e-HSC 5X6X8.5	P6010955	P6010956	P6012101
	e-HSC 5X8X9.5	P6010326	P6010805	P6012062
	e-HSC 5X8X9	P6010329	P6010808	P6012065
	e-HSC 5X8X12	P6013042	P6013043	P6013044
	e-HSC 5X8X11	P6013051	P6013052	P6013053
	e-HSC 5X8X15.5	P6012556	P6012557	P6012558
	e-HSC 5X8X14.5	P6012565	P6012566	P6012567
	e-HSC 5X8X19	P6010333	P6010818	P6012068
	e-HSC 5X8X18	P6010336	P6010821	P6012071
	e-HSC 6X8X6.5	P6013406	P6013407	P6013408
	e-HSC 6X8X6	P6013415	P6013416	P6013417
	e-HSC 6X8X12	P6013078	P6013079	P6013080
	e-HSC 6X8X11	P6013087	P6013088	P6013089
	e-HSC 6X8X14	P6010340	P6010831	P6012074
	e-HSC 6X8X13.5	P6010343	P6010834	P6012077
	e-HSC 6X8X18	P6012602	P6012603	P6012604
	e-HSC 6X8X17	P6012611	P6012612	P6012613
	e-HSC 6X8X22	P6012650	P6012651	P6012652
	e-HSC 6X8X21	P6012659	P6012660	P6012661
	e-HSC 6X10X11	P6013060	P6013061	P6013062
	e-HSC 6X10X10.5	P6013069	P6013070	P6013071
	e-HSC 8X8X8	P6013388	P6013389	P6013390
	e-HSC 8X8X7.5	P6013397	P6013398	P6013399
	e-HSC 8X10X10	P6013096	P6013097	P6013098
	e-HSC 8X10X9.5	P6013105	P6013106	P6013107
e-HSC 8X10X13.5	P6010347	P6010844	P6012080	
e-HSC 8X10X13	P6010350	P6010847	P6012083	
e-HSC 8X10X17	P6010165	P6010718	P6012044	
e-HSC 8X10X16	P6010170	P6010721	P6012047	

Impeller Parts Listings by Pump Model (Cont.)

CAT. NO.	MODEL	SS 304	SS 316	Bronze
42	e-HSC 8X10X21	P6012694	P6012695	P6012696
	e-HSC 8X10X20	P6012703	P6012704	P6012705
	e-HSC 8X10X26	P6013114	P6013115	P6013116
	e-HSC 8X10X25	P6013123	P6013124	P6013125
	e-HSC 10X10X8	P6013370	P6013371	P6013372
	e-HSC 10X10X7.5	P6013379	P6013380	P6013381
	e-HSC 10X12X15.5	P6010097	P6010700	P6012026
	e-HSC 10X12X14.5	P6010110	P6010703	P6012029
	e-HSC 10X12X19	P6011452	P6011453	P6012152
	e-HSC 10X12X18	P6011458	P6011459	P6012155
	e-HSC 10X12X24	P6011114	P6011115	P6012104
	e-HSC 10X12X23	P6011120	P6011121	P6012107
	e-HSC 12X12X9	P6013352	P6013353	P6013354
	e-HSC 12X12X8.5	P6013361	P6013362	P6013363
	e-HSC 12X12X10	P6010354	P6010857	P6012086
	e-HSC 12X12X9.5	P6010357	P6010860	P6012089
	e-HSC 12X14X13	P6010121	P6010706	P6012032
	e-HSC 12X14X12.5	P6010126	P6010709	P6012035
	e-HSC 12X16X18	P6011478	P6011479	P6012158
	e-HSC 12X16X17	P6011484	P6011485	P6012161
	e-HSC 12X16X22	P6010198	P6010724	P6012020
	e-HSC 12X16X21	P6010211	P6010727	P6012023
	e-HSC 12X16X28	P6011162	P6011163	P6012128
	e-HSC 12X16X27	P6011168	P6011169	P6012131
	e-HSC 14X14X12	P6011412	P6011413	P6012140
	e-HSC 14X14X11	P6011418	P6011419	P6012143
	e-HSC 14X16X15	P6010140	P6010712	P6012038
	e-HSC 14X16X14.5	P6010154	P6010715	P6012041
	e-HSC 14X16X27.5	P6011498	P6011499	P6012164
	e-HSC 14X16X26	P6011504	P6011505	P6012167
	e-HSC 14X18X18	P6011126	P6011127	P6012110
	e-HSC 14X18X17	P6011132	P6011133	P6012113
	e-HSC 14X18X21	P6011138	P6011139	P6012116
	e-HSC 14X18X20	P6011144	P6011145	P6012119
	e-HSC 16X16X13.5	P6011432	P6011433	P6012146
	e-HSC 16X16X13	P6011438	P6011439	P6012149
	e-HSC 16X20X20.5	P6011174	P6011175	P6012134
	e-HSC 16X20X19.5	P6011180	P6011181	P6012137
	e-HSC 16X20X23	P6011518	P6011519	P6012170
	e-HSC 16X20X22	P6011524	P6011525	P6012173
	e-HSC 18X20X15.5	P6010182	P6010730	P6012050
	e-HSC 18X20X14.5	P6010188	P6010733	P6012053
e-HSC 20X24X18	P6011150	P6011151	P6012122	
e-HSC 20X24X17	P6011156	P6011157	P6012125	

Impeller & Impeller WR Kit Parts Listings

CAT. NO.	MODEL	SS 304 Kit*	SS 316 Kit*
42	e-HSC 2.5X4X10.5	P6013430	P6013431
	e-HSC 2.5X4X10	P6013439	P6013440
	e-HSC 3X4X12.5	P6012994	P6012995
	e-HSC 3X4X12	P6013003	P6013004
	e-HSC 3X5X8.5	P6012470	P6012471
	e-HSC 3X5X8	P6012479	P6012480
	e-HSC 3X5X11	P6010933	P6010934
	e-HSC 3X5X10.5	P6010939	P6010940
	e-HSC 3X5X13.5	P6013012	P6013013
	e-HSC 3X5X13	P6013021	P6013022
	e-HSC 4X6X10	P6012516	P6012517
	e-HSC 4X6X9.5	P6012525	P6012526
	e-HSC 4X6X13	P6010321	P6010794
	e-HSC 4X6X12	P6010324	P6010797
	e-HSC 4X6X16	P6013030	P6013031
	e-HSC 4X6X15.5	P6013039	P6013040
	e-HSC 5X6X9	P6010953	P6010954
	e-HSC 5X6X8.5	P6010959	P6010960
	e-HSC 5X8X9.5	P6010328	P6010807
	e-HSC 5X8X9	P6010331	P6010810
	e-HSC 5X8X12	P6013048	P6013049
	e-HSC 5X8X11	P6013057	P6013058
	e-HSC 5X8X15.5	P6012562	P6012563
	e-HSC 5X8X14.5	P6012571	P6012572
	e-HSC 5X8X19	P6010335	P6010820
	e-HSC 5X8X18	P6010338	P6010823
	e-HSC 6X8X6.5	P6013412	P6013413
	e-HSC 6X8X6	P6013421	P6013422
	e-HSC 6X8X12	P6013084	P6013085
	e-HSC 6X8X11	P6013093	P6013094
	e-HSC 6X8X14	P6010342	P6010833
	e-HSC 6X8X13.5	P6010345	P6010836
	e-HSC 6X8X18	P6012608	P6012609
	e-HSC 6X8X17	P6012617	P6012618
	e-HSC 6X8X22	P6012656	P6012657
	e-HSC 6X8X21	P6012665	P6012666
	e-HSC 6X10X11	P6013066	P6013067
	e-HSC 6X10X10.5	P6013075	P6013076
	e-HSC 8X8X8	P6013394	P6013395
	e-HSC 8X8X7.5	P6013403	P6013404
	e-HSC 8X10X10	P6013102	P6013103
	e-HSC 8X10X9.5	P6013111	P6013112
e-HSC 8X10X13.5	P6010349	P6010846	
e-HSC 8X10X13	P6010352	P6010849	
e-HSC 8X10X17	P6010169	P6010720	
e-HSC 8X10X16	P6010172	P6010723	

*Kits based on impeller material. Kits consist of impeller, impeller wear rings and required fasteners.

Impeller, WR & CWR Kit Parts Listings (Cont.)

CAT. NO.	MODEL	SS 304 Kit*	SS 316 Kit*
42	e-HSC 8X10X21	P6012700	P6013121
	e-HSC 8X10X20	P6012709	P6013130
	e-HSC 8X10X26	P6013120	P6013377
	e-HSC 8X10X25	P6013129	P6013386
	e-HSC 10X10X8	P6013376	P6010702
	e-HSC 10X10X7.5	P6013385	P6010705
	e-HSC 10X12X15.5	P6010109	P6011457
	e-HSC 10X12X14.5	P6010112	P6011463
	e-HSC 10X12X19	P6011456	P6011119
	e-HSC 10X12X18	P6011462	P6011125
	e-HSC 10X12X24	P6011118	P6013359
	e-HSC 10X12X23	P6011124	P6013368
	e-HSC 12X12X9	P6013358	P6010859
	e-HSC 12X12X8.5	P6013367	P6010862
	e-HSC 12X12X10	P6010356	P6010708
	e-HSC 12X12X9.5	P6010359	P6010711
	e-HSC 12X14X13	P6010125	P6011483
	e-HSC 12X14X12.5	P6010128	P6011489
	e-HSC 12X16X18	P6011482	P6010726
	e-HSC 12X16X17	P6011488	P6010729
	e-HSC 12X16X22	P6010210	P6011167
	e-HSC 12X16X21	P6010213	P6011173
	e-HSC 12X16X28	P6011166	P6011417
	e-HSC 12X16X27	P6011172	P6011423
	e-HSC 14X14X12	P6011416	P6010714
	e-HSC 14X14X11	P6011422	P6010717
	e-HSC 14X16X15	P6010153	P6011503
	e-HSC 14X16X14.5	P6010156	P6011509
	e-HSC 14X16X27.5	P6011502	P6011131
	e-HSC 14X16X26	P6011508	P6011137
	e-HSC 14X18X18	P6011130	P6011143
	e-HSC 14X18X17	P6011136	P6011149
	e-HSC 14X18X21	P6011142	P6011437
	e-HSC 14X18X20	P6011148	P6011443
	e-HSC 16X16X13.5	P6011436	P6011179
	e-HSC 16X16X13	P6011442	P6011185
	e-HSC 16X20X20.5	P6011178	P6011523
	e-HSC 16X20X19.5	P6011184	P6011529
	e-HSC 16X20X23	P6011522	P6010732
	e-HSC 16X20X22	P6011528	P6010735
	e-HSC 18X20X15.5	P6010187	P6011155
	e-HSC 18X20X14.5	P6010190	P6011161
e-HSC 20X24X18	P6011154	P6013121	
e-HSC 20X24X17	P6011160	P6013130	

*Kits based on impeller material. Kits consist of impeller, impeller wear rings and required fasteners.

Impeller with CWR Parts Listings

CAT. NO.	MODEL	SS 304 Kit*	SS 316 Kit*
42	e-HSC 2.5X4X10.5	P6013427	P6013428
	e-HSC 2.5X4X10	P6013436	P6013437
	e-HSC 3X4X12.5	P6012991	P6012992
	e-HSC 3X4X12	P6013000	P6013001
	e-HSC 3X5X8.5	P6012467	P6012468
	e-HSC 3X5X8	P6012476	P6012477
	e-HSC 3X5X11	P6010931	P6010932
	e-HSC 3X5X10.5	P6010937	P6010938
	e-HSC 3X5X13.5	P6013009	P6013010
	e-HSC 3X5X13	P6013018	P6013019
	e-HSC 4X6X10	P6012513	P6012514
	e-HSC 4X6X9.5	P6012522	P6012523
	e-HSC 4X6X13	P6010320	P6010793
	e-HSC 4X6X12	P6010323	P6010796
	e-HSC 4X6X16	P6013027	P6013028
	e-HSC 4X6X15.5	P6013036	P6013037
	e-HSC 5X6X9	P6010951	P6010952
	e-HSC 5X6X8.5	P6010957	P6010958
	e-HSC 5X8X9.5	P6010327	P6010806
	e-HSC 5X8X9	P6010330	P6010809
	e-HSC 5X8X12	P6013045	P6013046
	e-HSC 5X8X11	P6013054	P6013055
	e-HSC 5X8X15.5	P6012559	P6012560
	e-HSC 5X8X14.5	P6012568	P6012569
	e-HSC 5X8X19	P6010334	P6010819
	e-HSC 5X8X18	P6010337	P6010822
	e-HSC 6X8X6.5	P6013409	P6013410
	e-HSC 6X8X6	P6013418	P6013419
	e-HSC 6X8X12	P6013081	P6013082
	e-HSC 6X8X11	P6013090	P6013091
	e-HSC 6X8X14	P6010341	P6010832
	e-HSC 6X8X13.5	P6010344	P6010835
	e-HSC 6X8X18	P6012605	P6012606
	e-HSC 6X8X17	P6012614	P6012615
	e-HSC 6X8X22	P6012653	P6012654
	e-HSC 6X8X21	P6012662	P6012663
	e-HSC 6X10X11	P6013063	P6013064
	e-HSC 6X10X10.5	P6013072	P6013073
	e-HSC 8X8X8	P6013391	P6013392
	e-HSC 8X8X7.5	P6013400	P6013401
	e-HSC 8X10X10	P6013099	P6013100
	e-HSC 8X10X9.5	P6013108	P6013109
e-HSC 8X10X13.5	P6010348	P6010845	
e-HSC 8X10X13	P6010351	P6010848	
e-HSC 8X10X17	P6010167	P6010719	
e-HSC 8X10X16	P6010171	P6010722	

*Listings contain impellers machined for impeller with casing wear ring configuration.

Impeller with CWR Parts Listings (Cont.)

CAT. NO.	MODEL	SS 304 Kit*	SS 316 Kit*
42	e-HSC 8X10X21	P6012697	P6012698
	e-HSC 8X10X20	P6012706	P6012707
	e-HSC 8X10X26	P6013117	P6013118
	e-HSC 8X10X25	P6013126	P6013127
	e-HSC 10X10X8	P6013373	P6013374
	e-HSC 10X10X7.5	P6013382	P6013383
	e-HSC 10X12X15.5	P6010107	P6010701
	e-HSC 10X12X14.5	P6010111	P6010704
	e-HSC 10X12X19	P6011454	P6011455
	e-HSC 10X12X18	P6011460	P6011461
	e-HSC 10X12X24	P6011116	P6011117
	e-HSC 10X12X23	P6011122	P6011123
	e-HSC 12X12X9	P6013355	P6013356
	e-HSC 12X12X8.5	P6013364	P6013365
	e-HSC 12X12X10	P6010355	P6010858
	e-HSC 12X12X9.5	P6010358	P6010861
	e-HSC 12X14X13	P6010123	P6010707
	e-HSC 12X14X12.5	P6010127	P6010710
	e-HSC 12X16X18	P6011480	P6011481
	e-HSC 12X16X17	P6011486	P6011487
	e-HSC 12X16X22	P6010208	P6010725
	e-HSC 12X16X21	P6010212	P6010728
	e-HSC 12X16X28	P6011164	P6011165
	e-HSC 12X16X27	P6011170	P6011171
	e-HSC 14X14X12	P6011414	P6011415
	e-HSC 14X14X11	P6011420	P6011421
	e-HSC 14X16X15	P6010151	P6010713
	e-HSC 14X16X14.5	P6010155	P6010716
	e-HSC 14X16X27.5	P6011500	P6011501
	e-HSC 14X16X26	P6011506	P6011507
	e-HSC 14X18X18	P6011128	P6011129
	e-HSC 14X18X17	P6011134	P6011135
	e-HSC 14X18X21	P6011140	P6011141
	e-HSC 14X18X20	P6011146	P6011147
	e-HSC 16X16X13.5	P6011434	P6011435
	e-HSC 16X16X13	P6011440	P6011441
	e-HSC 16X20X20.5	P6011176	P6011177
	e-HSC 16X20X19.5	P6011182	P6011183
	e-HSC 16X20X23	P6011520	P6011521
	e-HSC 16X20X22	P6011526	P6011527
	e-HSC 18X20X15.5	P6010185	P6010731
	e-HSC 18X20X14.5	P6010189	P6010734
e-HSC 20X24X18	P6011152	P6011153	
e-HSC 20X24X17	P6011158	P6011159	

*Listings contain impellers machined for impeller with casing wear ring configuration.

e-HSC Pump

Mechanical Seal Parts Listings

Type MR1 Mechanical Seal Parts Listings

CAT. NO.	MODEL	Carbon/SiC/EPDM	SiC/SiC/EPDM	Carbon/SiC/FKM	SiC/SiC/FKM
35	e-HSC 2.5X4X10.5	P6000000	P6000096	P6000262	P6000285
	e-HSC 2.5X4X10				
	e-HSC 3X4X12.5	P6000000	P6000096	P6000262	P6000285
	e-HSC 3X4X12				
	e-HSC 3X5X8.5	P6000000	P6000096	P6000262	P6000285
	e-HSC 3X5X8				
	e-HSC 3X5X11	P6000000	P6000096	P6000262	P6000285
	e-HSC 3X5X10.5				
	e-HSC 3X5X13.5	P6000000	P6000096	P6000262	P6000285
	e-HSC 3X5X13				
	e-HSC 4X6X10	P6000000	P6000096	P6000262	P6000285
	e-HSC 4X6X9.5				
	e-HSC 4X6X13	P6000001	P6000097	P6000263	P6000286
	e-HSC 4X6X12				
	e-HSC 4X6X16	P6000000	P6000096	P6000262	P6000285
	e-HSC 4X6X15.5				
	e-HSC 5X6X9	P6000000	P6000096	P6000262	P6000285
	e-HSC 5X6X8.5				
	e-HSC 5X8X9.5	P6000001	P6000097	P6000263	P6000286
	e-HSC 5X8X9				
	e-HSC 5X8X12	P6000001	P6000097	P6000263	P6000286
	e-HSC 5X8X11				
	e-HSC 5X8X15.5	P6000001	P6000097	P6000263	P6000286
	e-HSC 5X8X14.5				
	e-HSC 5X8X19	P6000001	P6000097	P6000263	P6000286
	e-HSC 5X8X18				
	e-HSC 6X8X6.5	P6000000	P6000096	P6000262	P6000285
	e-HSC 6X8X6				
	e-HSC 6X8X12	P6000001	P6000097	P6000263	P6000286
	e-HSC 6X8X11				
	e-HSC 6X8X14	P6000001	P6000097	P6000263	P6000286
	e-HSC 6X8X13.5				
	e-HSC 6X8X18	P6000002	P6000098	P6000264	P6000287
	e-HSC 6X8X17				
	e-HSC 6X8X22	P6000003	P6000099	P6000265	P6000288
	e-HSC 6X8X21				
	e-HSC 6X10X11	P6000002	P6000098	P6000264	P6000287
	e-HSC 6X10X10.5				
	e-HSC 8X8X8	P6000000	P6000096	P6000262	P6000285
	e-HSC 8X8X7.5				
e-HSC 8X10X10	P6000001	P6000097	P6000263	P6000286	
e-HSC 8X10X9.5					
e-HSC 8X10X13.5	P6000002	P6000098	P6000264	P6000287	
e-HSC 8X10X13					
e-HSC 8X10X17	P6000002	P6000098	P6000264	P6000287	
e-HSC 8X10X16					

Type MR1 Mechanical Seal Parts Listings (Cont.)

CAT. NO.	MODEL	Carbon/SiC/EPDM	SiC/SiC/EPDM	Carbon/SiC/FKM	SiC/SiC/FKM
35	e-HSC 8X10X21	P6000003	P6000099	P6000265	P6000288
	e-HSC 8X10X20				
	e-HSC 8X10X26	P6000004	P6000100	P6000266	P6000289
	e-HSC 8X10X25				
	e-HSC 10X10X8	P6000000	P6000096	P6000262	P6000285
	e-HSC 10X10X7.5				
	e-HSC 10X12X15.5	P6000003	P6000099	P6000265	P6000288
	e-HSC 10X12X14.5				
	e-HSC 10X12X19	P6000003	P6000099	P6000265	P6000288
	e-HSC 10X12X18				
	e-HSC 10X12X24	P6000005	P6000101	P6000267	P6000290
	e-HSC 10X12X23				
	e-HSC 12X12X9	P6000001	P6000097	P6000263	P6000286
	e-HSC 12X12X8.5				
	e-HSC 12X12X10	P6000001	P6000097	P6000263	P6000286
	e-HSC 12X12X9.5				
	e-HSC 12X14X13	P6000003	P6000099	P6000265	P6000288
	e-HSC 12X14X12.5				
	e-HSC 12X16X18	P6000004	P6000100	P6000266	P6000289
	e-HSC 12X16X17				
	e-HSC 12X16X22	P6000005	P6000101	P6000267	P6000290
	e-HSC 12X16X21				
	e-HSC 12X16X28	P6000006	P6000102	P6000268	P6000291
	e-HSC 12X16X27				
	e-HSC 14X14X12	P6000001	P6000097	P6000263	P6000286
	e-HSC 14X14X11				
	e-HSC 14X16X15	P6000004	P6000100	P6000266	P6000289
	e-HSC 14X16X14.5				
	e-HSC 14X16X27.5	P6000008	P6000104	P6000269	P6000292
	e-HSC 14X16X26				
	e-HSC 14X18X18	P6000005	P6000101	P6000267	P6000290
	e-HSC 14X18X17				
	e-HSC 14X18X21	P6000005	P6000101	P6000267	P6000290
	e-HSC 14X18X20				
	e-HSC 16X16X13.5	P6000002	P6000098	P6000264	P6000287
e-HSC 16X16X13					
e-HSC 16X20X20.5	P6000006	P6000102	P6000268	P6000291	
e-HSC 16X20X19.5					
e-HSC 16X20X23	P6000008	P6000104	P6000269	P6000292	
e-HSC 16X20X22					
e-HSC 18X20X15.5	P6000003	P6000099	P6000265	P6000288	
e-HSC 18X20X14.5					
e-HSC 20X24X18	P6000005	P6000101	P6000267	P6000290	
e-HSC 20X24X17					

Type MR2 Mechanical Seal Parts Listings

CAT. NO.	MODEL	Carbon/SiC/EPDM	SiC/SiC/EPDM	Carbon/SiC/FKM	SiC/SiC/FKM
35	e-HSC 2.5X4X10.5	P6000019	P6000116	P6000308	P6000316
	e-HSC 2.5X4X10				
	e-HSC 3X4X12.5	P6000019	P6000116	P6000308	P6000316
	e-HSC 3X4X12				
	e-HSC 3X5X8.5	P6000019	P6000116	P6000308	P6000316
	e-HSC 3X5X8				
	e-HSC 3X5X11	P6000019	P6000116	P6000308	P6000316
	e-HSC 3X5X10.5				
	e-HSC 3X5X13.5	P6000019	P6000116	P6000308	P6000316
	e-HSC 3X5X13				
	e-HSC 4X6X10	P6000019	P6000116	P6000308	P6000316
	e-HSC 4X6X9.5				
	e-HSC 4X6X13	P6000020	P6000117	P6000309	P6000317
	e-HSC 4X6X12				
	e-HSC 4X6X16	P6000019	P6000116	P6000308	P6000316
	e-HSC 4X6X15.5				
	e-HSC 5X6X9	P6000019	P6000116	P6000308	P6000316
	e-HSC 5X6X8.5				
	e-HSC 5X8X9.5	P6000020	P6000117	P6000309	P6000317
	e-HSC 5X8X9				
	e-HSC 5X8X12	P6000020	P6000117	P6000309	P6000317
	e-HSC 5X8X11				
	e-HSC 5X8X15.5	P6000020	P6000117	P6000309	P6000317
	e-HSC 5X8X14.5				
	e-HSC 5X8X19	P6000020	P6000117	P6000309	P6000317
	e-HSC 5X8X18				
	e-HSC 6X8X6.5	P6000019	P6000116	P6000308	P6000316
	e-HSC 6X8X6				
	e-HSC 6X8X12	P6000020	P6000117	P6000309	P6000317
	e-HSC 6X8X11				
	e-HSC 6X8X14	P6000020	P6000117	P6000309	P6000317
	e-HSC 6X8X13.5				
	e-HSC 6X8X18	P6000021	P6000118	P6000310	P6000318
	e-HSC 6X8X17				
	e-HSC 6X8X22	P6000022	P6000119	P6000311	P6000319
	e-HSC 6X8X21				
	e-HSC 6X10X11	P6000021	P6000118	P6000310	P6000318
	e-HSC 6X10X10.5				
	e-HSC 8X8X8	P6000019	P6000116	P6000308	P6000316
	e-HSC 8X8X7.5				
e-HSC 8X10X10	P6000020	P6000117	P6000309	P6000317	
e-HSC 8X10X9.5					
e-HSC 8X10X13.5	P6000021	P6000118	P6000310	P6000318	
e-HSC 8X10X13					
e-HSC 8X10X17	P6000021	P6000118	P6000310	P6000318	
e-HSC 8X10X16					

Type MR2 Mechanical Seal Parts Listings (Cont.)

CAT. NO.	MODEL	Carbon/SiC/EPDM	SiC/SiC/EPDM	Carbon/SiC/FKM	SiC/SiC/FKM
35	e-HSC 8X10X21	P6000022	P6000119	P6000311	P6000319
	e-HSC 8X10X20				
	e-HSC 8X10X26	P6000023	P6000120	P6000312	P6000320
	e-HSC 8X10X25				
	e-HSC 10X10X8	P6000019	P6000116	P6000308	P6000316
	e-HSC 10X10X7.5				
	e-HSC 10X12X15.5	P6000022	P6000119	P6000311	P6000319
	e-HSC 10X12X14.5				
	e-HSC 10X12X19	P6000022	P6000119	P6000311	P6000319
	e-HSC 10X12X18				
	e-HSC 10X12X24	P6000024	P6000121	P6000313	P6000321
	e-HSC 10X12X23				
	e-HSC 12X12X9	P6000020	P6000117	P6000309	P6000317
	e-HSC 12X12X8.5				
	e-HSC 12X12X10	P6000020	P6000117	P6000309	P6000317
	e-HSC 12X12X9.5				
	e-HSC 12X14X13	P6000022	P6000119	P6000311	P6000319
	e-HSC 12X14X12.5				
	e-HSC 12X16X18	P6000023	P6000120	P6000312	P6000320
	e-HSC 12X16X17				
	e-HSC 12X16X22	P6000024	P6000121	P6000313	P6000321
	e-HSC 12X16X21				
	e-HSC 12X16X28	P6000025	P6000122	P6000314	P6000322
	e-HSC 12X16X27				
	e-HSC 14X14X12	P6000020	P6000117	P6000309	P6000317
	e-HSC 14X14X11				
	e-HSC 14X16X15	P6000023	P6000120	P6000312	P6000320
	e-HSC 14X16X14.5				
	e-HSC 14X16X27.5	P6000026	P6000123	P6000315	P6000323
	e-HSC 14X16X26				
	e-HSC 14X18X18	P6000024	P6000121	P6000313	P6000321
	e-HSC 14X18X17				
	e-HSC 14X18X21	P6000024	P6000121	P6000313	P6000321
	e-HSC 14X18X20				
	e-HSC 16X16X13.5	P6000021	P6000118	P6000310	P6000318
e-HSC 16X16X13					
e-HSC 16X20X20.5	P6000025	P6000122	P6000314	P6000322	
e-HSC 16X20X19.5					
e-HSC 16X20X23	P6000026	P6000123	P6000315	P6000323	
e-HSC 16X20X22					
e-HSC 18X20X15.5	P6000022	P6000119	P6000311	P6000319	
e-HSC 18X20X14.5					
e-HSC 20X24X18	P6000024	P6000121	P6000313	P6000321	
e-HSC 20X24X17					

Standard Seal Replacement Kit

No.	Model	Model	Shaft Size in. [mm]	Kit PN
1	2.5X4X10.5	2.5X4X10	1.38 [35]	P6016122
2	3X4X12.5	3X4X12	1.38 [35]	P6016116
3	3X5X8.5	3X5X8	1.38 [35]	P6016114
4	3X5X11	3X5X10.5	1.38 [35]	P6016112
5	3X5X13.5	3X5X13	1.38 [35]	P6016117
6	4X6X10	4X6X9.5	1.38 [35]	P6016115
7	4X6X13	4X6X12	1.77 [45]	P6016126
8	4X6X16	4X6X15.5	1.38 [35]	P6016118
9	5X6X9	5X6X8.5	1.38 [35]	P6016113
10	5X8X9.5	5X8X9	1.77 [45]	P6016124
11	5X8X12	5X8X11	1.77 [45]	P6016130
12	5X8X15.5	5X8X14.5	1.77 [45]	P6016129
13	5X8X19	5X8X18	1.77 [45]	P6016128
14	6X8X6.5	6X8X6	1.38 [35]	P6016121
15	6X8X12	6X8X11	1.77 [45]	P6016131
16	6X8X14	6X8X13.5	1.77 [45]	P6016123
17	6X8X18	6X8X17	2.17 [55]	P6016137
18	6X8X22	6X8X21	2.56 [65]	P6016143
19	6X10X11	6X10X10.5	2.17 [55]	P6016138
20	8X8X8	8X8X7.5	1.38 [35]	P6016120
21	8X10X10	8X10X9.5	1.77 [45]	P6016132
22	8X10X13.5	8X10X13	2.17 [55]	P6016134
23	8X10X17	8X10X16	2.17 [55]	P6016135
24	8X10X21	8X10X20	2.56 [65]	P6016144
25	8X10X26	8X10X25	2.95 [75]	P6016147
26	10X10X8	10X10X7.5	1.38 [35]	P6016119
27	10X12X15.5	10X12X14.5	2.56 [65]	P6016139
28	10X12X19	10X12X18	2.56 [65]	P6016142
29	10X12X24	10X12X23	3.35 [85]	P6016148
30	12X12X9	12X12X8.5	1.77 [45]	P6016133
31	12X12X10	12X12X9.5	1.77 [45]	P6016125
32	12X14X13	12X14X12.5	2.56 [65]	P6016140
33	12X16X18	12X16X17	2.95 [75]	P6016146
34	12X16X22	12X16X21	3.35 [85]	P6016149
35	12X16X28	12X16X27	3.74 [95]	P6016153
36	14X14X12	14X14X11	1.77 [45]	P6016127
37	14X16X15	14X16X14.5	2.95 [75]	P6016145
38	14X16X27.5	14X16X26	4.13 [105]	P6016155
39	14X18X18	14X18X17	3.35 [85]	P6016150
40	14X18X21	14X18X20	3.35 [85]	P6016151
41	16X16X13.5	16X16X13	2.17 [55]	P6016136
42	16X20X20.5	16X20X19.5	3.74 [95]	P6016154
43	16X20X23	16X20X22	4.13 [105]	P6016156
44	18X20X15.5	18X20X14.5	2.56 [65]	P6016141
45	20X24X18	20X24X17	3.35 [85]	P6016152

Each seal replacement kit consists of (1) casing gasket – suction, (1) casing gasket – discharge, (2) bearing gasket, (2) seal end cover O-ring, (4) stuffing box O-ring, (2) MR2 mechanical seal, (2) bearing, (2) lip seal.

Xylem |'zīləm|

- 1) The tissue in plants that brings water upward from the roots;
- 2) a leading global water technology company.

We're a global team unified in a common purpose: creating advanced technology solutions to the world's water challenges. Developing new technologies that will improve the way water is used, conserved, and re-used in the future is central to our work. Our products and services move, treat, analyze, monitor and return water to the environment, in public utility, industrial, residential and commercial building services settings. Xylem also provides a leading portfolio of smart metering, network technologies and advanced analytics solutions for water, electric and gas utilities. In more than 150 countries, we have strong, long-standing relationships with customers who know us for our powerful combination of leading product brands and applications expertise with a strong focus on developing comprehensive, sustainable solutions.

For more information on how Xylem can help you, go to www.xyleminc.com

We value your feedback. Please take our 3 question survey at bellgossett.com/survey to let us know how we are doing.



Xylem Inc.
8200 N. Austin Avenue
Morton Grove, Illinois 60053
Phone: (847) 966-3700
Fax: (847) 965-8379
www.xyleminc.com/bellgossett

Bell & Gossett is a trademark of Xylem Inc. or one of its subsidiaries.
© 2019 Xylem Inc. CP-516A-PL May 2019